

Home Mission Spring 2016 Report

Mark 1:38 – Jesus replied, “Let us go somewhere else—to the nearby villages—so I can preach there also. That is why I have come.”

Home Missions Mission Starts

The Board for Home Missions met on April 14-15, 2016. One of the items of business was to prioritize new mission starts for the coming fiscal year. Eight new starts were authorized to receive funding starting July 1, 2016. After some of the locations, the general vicinity of the community is identified.

1. Lehi, Utah (south of Salt Lake City)
2. Fredericksburg Virginia (south of Washington DC)
3. Coeur d’Alene Idaho, St Matthew (east of Spokane WA)
4. Meridian Idaho, Cross of Christ (south-west of Boise ID)
5. Atlanta Georgia (inner city mission)
6. Rockwall Texas, Divine Peace (east of Dallas)
7. Victoria Texas, Redeemer (south-east of San Antonio)
8. Stevens Point Wisconsin, The Word (central WI)

Five of the eight new missions are multi-site missions (#3, #4, #6, #7, and #8). This means the mission is connected with an existing church. For example, the mission starting in Coeur d’Alene ID is connected with St. Matthew in Spokane WA. While there are going to be two locations where worship and ministry take place and one site – Coeur d’Alene is a new site, overall there is one leadership team with one budget. Also, with each multi-site location, members from the existing church are either going to be full-time members at the new site or will help for one to two years in getting the second site going. Later in this report will be an invitation to a WELS National Multi-Site Conference coming up in November.

In addition to the eight mission starts, the Board for Home Missions approved three enhancements and one relocation. Enhancements are typically 2-4 year subsidy agreements to assist a congregation with expanding or cross-cultural ministry. The four ministries are:

1. Centennial Lutheran in Milwaukee WI; three years of support to Call a Hispanic pastor
2. Risen Savior Lutheran in Lakewood Ranch FL; subsidy to assist the congregation to Call a pastor
3. Abiding Grace in Covington GA and Henry County GA (multi-site) to support existing ministry
4. Peace Lutheran in Holiday FL to relocate to Trinity FL

Overall, the Board for Home Missions received twenty-four requests. The total funding for the twelve requests which received authorization (means funding starts July 1, 2016) is \$983,000. In being able to take the above steps, Home Missions says “thank you” to our church body for its mission offerings and synod members for the many individual gifts which make it possible for Home Missions to do what it does.

While not a part of the funding which supported the above twelve ministries, Home Missions also wants to say “thank you” to the Church Extension Fund (CEF) for its unrestricted net asset policy distribution. Established in February of 2015 to aid Home Missions, the distribution in FY 15 of \$832,000 and the projected \$800,000 distribution for FY 16 allowed Home Missions to authorize two missions in the spring of 2015. Without these distributions, in 2015 our church body would have opened two less missions. Home Mission truly appreciates this “over and above” support from our CEF partner.

Church Extension Fund

As noted on the first page of this report, Church Extension Fund (CEF) is a valuable Home Mission partner. Through the ministry of CEF, loans are made to mission churches to purchase land and help build/buy the first worship facility. Not only does CEF give loans, through its grant programs mission churches receive additional financial support which allows them the opportunity to afford buying land and building a worship facility. Since 1993 when the grant program has begun, over \$26M in grants have been given.

In the recent past, CEF also has given two special grants (\$1M in Feb. of 2011 and \$1.3M in Sept. of 2013). There are twelve churches which have received portions of those two grants to help those churches purchase land / put money toward building costs. Home Missions continues to track how those mission ministries are doing with the special grant blessing.

WELS National Multi-Site conference for WELS churches takes place November 14-16, 2016, in Tucson AZ

What is it all about?

The multi-site movement is all about reaching more people, and bringing mission work to many more congregations, by helping to start new churches in new locations. The potential for this relatively new strategy among WELS congregations is tremendous. While multi-site churches may have many practical benefits such as shared resources, efficient organization, cost-effective programs, and more; the greatest blessing possible is that God would use it to reach more people with the gospel.

Why should you join us for this conference?

Some congregations are already multi-site churches. Others could benefit from considering multi-site ministry, or learning from those who have multi-site church experience. For these reasons, the national multi-site conference for WELS churches has been organized and attendance is open to everyone. There will be beneficial information for churches that are already doing multi-site ministry as well as churches that are considering multi-site ministry as a way to reach more people with the gospel.

Host: Grace Lutheran Church in Tucson, Vail, Sahuarita, and Benson, Arizona.

Activities: The conference will include nearly a dozen speakers from some of the most experienced WELS Multi-site churches and pastors. Their experience will be valuable for all participants – pastors, congregational leaders, and interested lay people – regardless of their level of multi-site church experience

Vicar in Mission Settings

For many years Home Missions has supported a program called Vicar in Missions (VIMs). Some of the Wisconsin Lutheran Seminary class assigned to be vicars are assigned into mission or mission-minded congregations. The past six years Wisconsin Lutheran Seminary has joined Home Missions in this venture. Before this partnership 8-12 students were assigned into a VIM setting. Now with this partnership up to 21-22 students have been assigned as a VIM. During the Home Mission meeting, the Home Mission Executive Committee and two representatives from WLS considered thirty-four requests for a VIM. Based on available funding from Home Missions, WLS, and the participating congregations, up to twenty VIMs will be assigned. At the time of this writing there are twenty-six second year students at Wisconsin Lutheran Seminary who are eligible to be assigned as a vicar.

Ministry of Christian Giving

On Oct. 15, 2015 the Conference of Presidents approved an “Individual Campaign” for Home and World Missions for FY 16-17; July 1, 2016-June 30, 2017. Over the past years the Ministry of Christian Giving has been assisting our synod or different ministries with special campaigns. An “Individual Campaign” means that while individuals will be approached to consider making a special gift to Missions, promotional materials and invitations to each WELS congregation won’t be a part of the campaign. While WELS churches won’t be directly invited to participate, congregations are welcome to do so if they so choose.

Missions (Home and World) have been working with the Ministry of Christian Giving Director, Pastor Kurt Lueneburg and his staff in preparation for the campaign. During the fall months of 2016, Planned Giving Counselors (PGC) will make visits to donors. Joining the PGCs on many of their visits will be Mission representatives; mission pastors in both home and world settings, administrative committee members as well as district mission board members and other Mission personnel as well.

The gifts to Missions will be going to new initiatives in both Home and World mission efforts. The distributions of the gifts will be 40% to Home, 40% to World and 20% to the Joint Mission Council.

Joint Mission Council

The Joint Mission Council (JMC) is made up of the two mission administrators; Pastor Keith Free - Home, Pastor Larry Schlomer - World, the two mission chairmen; Pastor Howie Mohlke – World, Pastor Chuck Westra – Home, Mr. Sean Young, Director of Mission Operations (Chair) and a layman from the World Mission Board – Dr. Bob Anderson, and a layman from the Home Mission Board – Mr. Jude Peck. The JMC works on mission issues which impact both Home and World Missions.

Serving under the JMC are the Global Ministry Committee (GMC) and the Global Hmong Committee (GHC). The GMC assists WELS congregations in reaching out to immigrant people groups here in the United States and in their country of origin. The assistance can be connecting people together who have interest and ability to move the ministry forward, planning, encouraging, and recommending ministry plans to the JMC for funding. Serving on the GMC are Pastor Nathan Seiltz (Chair), Professor Tom Hunter, Pastor John Vogt, Mr. Bill Meier, Mr. Juan Garcia, Pastor Paul Prange and Mr. Sean Young.

Since July 1, 2015, the GHC has been looking at Hmong ministry both in the United States (US) and Asia determine what are good ways to coordinate Hmong ministry as well as what are the best ways to utilize and allocate the funds designated for Hmong ministry? Two Hmong pastors; Bounkeo Lor and Pheng Moua and two Anglo pastors; Keith Free (chair) and Robb Raasch serve on the GHC. A US Hmong Convention takes place July 8-10 in St. Paul MN. On October 5 & 6, an Asian Conference takes place at Wisconsin Lutheran Seminary.

Through gifts and endowment earnings, the JMC uses these resources to help support US ministry which is also reaching back to the country of origin where its members are from. Two examples of this are:

1) Chapel of the Improvement Lutheran Church in Las Vegas NV – this ministry has a Liberian spiritual leaders. In March and April of this year, Isaac David and Anglo mentor Matt Vogt were in Liberia for two weeks training spiritual leaders to share God’s Word where they live. Funding has been approved for two fiscal years.

2) Jerusalem Lutheran Church and School n Morton Grove IL serves a number of Koreans through its school. Morton Grove itself is close to 30% Korean. The JMC is financially helping Jerusalem Lutheran so that a Korean MLC might be assigned in this school. If the assignment takes place, in addition to classroom duties, the Korean teacher would look to start an after school Academy. The pray is more Korean students will participate and through more Korean contacts, we may learn of more contacts in South Korea with whom we can share God’s Word.

Subsidized Missions / Unsubsidized Missions

At the April 2016 Board for Home Mission (BHM) meeting, the BHM approved changing designations for mission congregations. Over the years there have been various designations. Starting on July 1, 2016, there will either be subsidized missions or unsubsidized missions. A subsidized mission receives financial support from the BHM. An unsubsidized mission is a truly a mission but does not receive financial support from the BHM (both subsidized and unsubsidized missions are eligible for special project funds on a per request basis). In both the subsidized and unsubsidized missions, before receiving its specific designation, required documentation is submitted and the BHM determines whether or not to grant authorization of the mission request. Over the past 10 years there have been a number of churches which have been under the unsubsidized classification. In Home Missions we are thankful to work with all the mission congregations in order to reach more souls with the gospel of Jesus Christ.

Summer Student Assistants

Similar to the vicar program, Home Missions and Wisconsin Lutheran Seminary (WLS) work together on the Summer Student Assistant (SSA) program. This program places first or second year WLS students into mission or mission-minded congregations over the summer for a 10 week period. The students lead in worship as well as preaches. They participate in outreach events as well as do canvassing and witnessing. These students receive a mini-vicar training experience during the summer. For the coming summer (2016) Home Missions is supporting three SSAs in mission congregations. Four self-supporting congregation also are sponsoring a SSA.

Campus Ministry

The WELS Campus Ministry Committee (CMC) is an eight-member committee of laymen and pastors who serve under the Board for Home Missions. Pastor Charlie Vannieuwenhoven serves as the chairman. The CMC exists to assist congregations in ministering to college students and other young adults with the means of grace so that they may grow in the faith and be trained for service in Christ's kingdom. These congregations reach out to about 6,500 students. Please consider finding someone in your congregation to gather each college-age student's educational plans and share it with the CMC. To sign up and learn more about submitting information, visit wels.net/campus-ministry.

At its November 5 & 6, 2015 meeting, one of the action items of the CMC was to grant to Divine Word Lutheran in Plover WI \$50,000 from its special project funds to assist this congregation in the purchase of a building which is a mile from the University of Wisconsin – Stevens Point. The building will serve two functions. Starting in the fall of 2016 it will serve as a campus center for the active campus ministry Divine Word has. The building will also serve as a second worship site as Divine Word has chosen to take the multi-site approach (see above). The Stevens Point location is called "The Word." Thus, while there will be one congregation (Divine Word and The Word), there are going to be two locations where this congregation offers worship services as well as having a "home" for campus ministry.

As it does every two years the CMC is looking to encourage and enhance campus ministries by hosting a Campus Ministry Conference in Waukesha on May 15 & 16, 2017. More information will be coming on this Conference.

Home Mission Personnel

Continuing to serve as Mission Counselors are Pastor Mark Birkholz, Pastor Peter Kruschel and Pastor Ed Schuppe. Pastor Tim Flunker serves as the Hispanic Outreach Consultant. We thank these men for the many ways in which they serve Home Missions. We also thank Dr. Keith Eldred, Pastor Nate Strutz and Pastor Wayne Uhlhorn. For the past years they have served on the Board for Home Mission's Executive Committee (BHM EC). Their terms are done. Replacing them on the BHM EC are Pastor Mark Gabb, Mr. Mark Hartman and Pastor Matt Vogt. We thank them for their willingness to serve. Also on the BHM EC are Pastor Chuck Westra (also BHM Chairman) and Mr. Steve Wolf.



WELS CEF Activity Update

2015

WELS CEF's mission is to provide financing through loans and grants to mission congregations so they can acquire land and ministry facilities to be used for gospel outreach.

Loan and Grant Highlights

- ✦ \$21.2 million of new loans and \$1.9 million of new grant requests were approved in fiscal year 2014-15, making it the third highest new loan approval amount for a fiscal year in WELS CEF history
- ✦ 38 total origination projects were approved, including five land purchases, 18 new facility projects, and 15 other projects including parsonage purchases, renovations, increases, and refinances
- ✦ 12 congregations completed construction loans totaling over \$15.6 million
- ✦ 18 congregations started new construction loans with final loans expected to total \$18.2 million
- ✦ Three mission congregations purchased existing facilities with additional loans for renovations; two mission congregations purchased land sites; and one mission completed a parsonage purchase
- ✦ WELS CEF expensed over \$1.4 million of matching grants to 11 mission recipients

Operations and Support Highlights

- ✦ WELS CEF was blessed with an operational surplus of over \$3.7 million for fiscal year 2014-15
- ✦ WELS CEF's \$133.7 million loan portfolio includes loans to 206 WELS congregations and affiliates
- ✦ Over 3,600 WELS members, congregations, and affiliates have entrusted WELS CEF with \$83 million in member investments
- ✦ \$27.8 million of matching grants to mission congregations and \$3.3 million of special grants to Home Missions have been provided by WELS CEF since 1993
- ✦ WELS CEF has been blessed with an average retention rate of 80% for maturing member investments
- ✦ WELS CEF has maintained a base interest rate of 3.75% for new loans to mission congregations in addition to its matching grant programs for land and facility projects
- ✦ WELS CEF continues to offer loan financing opportunities for WELS self-supporting congregations
- ✦ A net asset distribution from WELS CEF of nearly \$833,000 to Home Missions was approved to help support the opening of additional new missions

Consider helping WELS CEF with our goal of assisting WELS congregations by investing with CEF, sending a gift, or informing others about our mission and financing programs.

The purchase of WELS CEF securities is subject to risks which are described in our offering circular. This is not an offer to sell you our securities, and we are not soliciting you to buy our securities. We will offer and sell our securities only in states where authorized. These securities are neither offered nor available for sale in Pennsylvania, West Virginia, or the District of Columbia.

The offering is made solely by our offering circular.

✦ Not FDIC or SIPC insured

✦ Not a bank deposit

✦ No synod guarantee

Build your future. Build your church.
wels.net/cef • cef@wels.net • 1-866-511-7793



Trinity
Neenah, Wis.



Spirit of Life
Caledonia, Mich.



Trinity
Castries, St. Lucia, West Indies



Christ the Lord
Houston, Tex.

ARIZONA-CALIFORNIA DISTRICT

**Korean Fellowship Church –
Las Vegas, Nev.**

kfclv.onmam.com,
wateroflifelasvegas.org (parsonage
purchase)

MICHIGAN DISTRICT

Spirit of Life – Caledonia, Mich.

spiritoflifecal.org (facility construction)

MINNESOTA DISTRICT

Christ – Hugo, Minn.

christlutheran-wels.org
(multi-site facility construction)

SOUTH CENTRAL DISTRICT

**Christ The Lord – Sienna
Plantation, Tex.**

christ-the-lord.org (facility construction)

Christ The King – Tulsa, Okla.

mtolivetulsa.net (land purchase)

NORTH ATLANTIC DISTRICT

**Shepherd of the Hills –
Winchester, Va.**

shepherdofthehillslutheran.net
(facility purchase and renovations)

COLORADO DISTRICT

Christ – Denver, Colo.

clcdenver.org
(facility purchase and renovations)

Messiah – Wichita, Kan.

messiahks.com
(facility expansion and renovations)

**Abiding Word – Highlands
Ranch, Colo.**

awlc.org (repaving project)

**Prince of Peace – Salt Lake
City, Utah**

popslc.org (refinance and paving)

SOUTHEASTERN WISCONSIN DISTRICT

Light of Life – Greenwood, Ind.

lolgreenwood.org (facility
construction)

Atonement – Milwaukee, Wis.

atonementwels.org
(facility renovation and payoff)

NORTHERN WISCONSIN DISTRICT

St. Peter – Freedom, Wis.

922church.com (facility construction and
school expansion)

Trinity – Neenah, Wis.

trinityneenah.net
(school addition and renovations)

SOUTH ATLANTIC DISTRICT

**Trinity – Castries, St. Lucia,
West Indies**

islandlutherans.com (facility
construction)

**Shepherd of the Hills – Maryville
& Knoxville, Tenn.**

knoxvilleshepherd.com
(multi-site land purchase and facility
expansion)

**Kingsway of Florida Ministries –
Beverly Hills, Fla.**

kingswayofbeverlyhills.com, stpauls.edu
(senior living facility construction and
participation loan)

Congregations listed above are recently completed projects with financing from WELS CEF. Visit their websites to learn more about the congregations and see how WELS CEF resources are assisting WELS congregations.

Build your future. Build your church.
wels.net/cef • cef@wels.net • 1-866-511-7793



Go
and make

DISCIPLES



Multi-Language Publications

MLP has a bold vision, but a vision based on God's promises. It is the promise that his Word accomplishes, with the work of the Holy Spirit, his purpose in calling people to faith in Jesus Christ as their Savior.

With goals to reach 100 million people with the gospel in the next ten years and to have at least 2 million people using discipleship training media, MLP is reaching into areas of the world unreachable until now.

- Television broadcasts are reaching Urdu speaking people all over the world
- An online learning academy has seen tremendous impact on growing discipleship in Latin America
- The number of materials for outreach to the Sudanese and the Vietnamese is expanding because of their thirst for the gospel

wels.net/mlp



video resources

Voice recording work is being done in Boise, Idaho, for the Vietnamese dubbing of the films *Road to Emmaus* and *Come Follow Me* by Boettcher/Trinklein.



printed materials

Luther's Small Catechism along with various other printed materials are being developed to minister to the growing Sudanese population in the United States and to their families still living in the Sudan.

websites

academiacrsto.com

This popular online site has had over 500,000 visitors who are encouraged to enroll in courses designed to teach basic biblical principles. Along with its Facebook page, we are reaching people in Latin America where over 35 potential leaders are being trained to plant churches.

iglesialuteranacrsto.com

Weekly worship services are streamed on this site which also provides downloadable Christian music liturgy and song materials suitable for worship.

crisopalabradevida.com

Daily devotions are the focus of this website which also has its own Facebook page.

television broadcasts

A monthly television broadcast originating from Thailand is reaching 1.5 million Urdu speaking people throughout the world. These broadcasts teach Bible stories through the use of puppets and song.

How can you help with this important work?

- **Pray** for this work
- **Use** these materials yourself to reach out to your congregation, friends, and family
- **Share** the story about MLP and its goal to go and make disciples
- **Stay connected** through our online digital newsletter. Sign up at wels.net/mlp
- **Shop** for these and other MLP products at nph.net/mlp

WELS Christian Aid & Relief

Our Purpose

WELS Christian Aid and Relief (CAR) serves as our synod's "ministry of compassion", bringing physical relief to victims of natural disasters in the form of cash grants, food, clothing, and medical supplies. CAR also partners with WELS missionaries to support humanitarian aid projects to help build bridges to proclaim the gospel. The mission of CAR is drawn from the Scriptural encouragement, *Therefore, as we have opportunity, let us do good to all people, especially to those who belong to the family of believers. Galatians 6:10* Because of all that Christ has done for us, we are eager to reflect Christ's love and compassion to those in need. We seek to personalize our efforts by conducting careful assessments and distributing our funds first through our churches, and then through other trusted secular agencies.



Life Line

Crown Community Garden

The WELS Christian Aid and Relief "Life Line" video series has been developed to share the gospel bridge building work being done throughout the world by the support of gifts from the generous people in the WELS. The latest "Life Line" features Crown of Life Lutheran Church in New Orleans, LA, ten years after hurricane Katrina. This "Life Line" features interviews from members of Crown of Life with a special invitation for those who helped with the Katrina recovery effort to attend the church's rededication service on Sunday, October 30th, 2016 at 9 A.M. In addition, this "Life Line" shares the creation and growth of the Crown Community Garden. **To watch the video visit, vimeo.com/153045342.**



"Can you help?"

This is the question we hear the most. It comes either from pastors who are looking for assistance with a member family that is in need or, from individuals who contact us who are struggling with critical issues in their lives.

The answer is almost always "Yes." However, there is a process and guidelines as to how we help. This process and these guidelines have been established to make sure that the relief assistance actually gets to those in need and, that we share opportunities to express our Christ-like love and compassion with our members and congregations.

The way that we do this is by working with and through our WELS/ELS congregations when someone is in need. So, the question is really not, "Can you help?" The question should really be, "How can you help us help them?"

When a pastor or congregational leader contacts us about assisting an individual or family, we want to learn what the circumstances are, what other sources of assistance may be available, and what is the congregation able to do to help. With this knowledge we can then brainstorm with them different ways Christian Aid and Relief may be able to help them to get the best outcome possible for the individual or family.

When an individual contacts us outside of the congregation, we want to do the same thing. We want to learn the circumstances, what other sources of assistance may be available and then if they are WELS/ELS, contact their pastor to see how we can assist the congregation in helping them. If they are not WELS/ELS, then we ask where they are located and we put them in contact with the nearest WELS/ELS pastor so not only physical aid may be offered, but spiritual as well.

Every year, a large portion of our grant activity is for general aid which provides food for pantries, inner city relief and general aid for called workers and congregational members suffering from extreme medical and financial burdens. Last year we granted \$100,119 in general aid grants to help congregations help those in need. Every penny of these funds came from the donations of WELS/ELS members, congregations, and schools who wanted to share in those opportunities to reach out with love and compassion to those that were hurting.



facebook.com/WELSChristianAidAndRelief

Malawi Flood Relief

In the fall of 2015, the staff and volunteers of WELS Christian Aid and Relief (CAR) completed a joint disaster relief project with the WELS mission team and the Lutheran Church of Central Africa (LCCA) in Malawi. This project began back in February of 2015 after torrential storms and flooding ravaged many areas of the country where the LCCA had members and churches. CAR sent initial funds to the mission team to purchase and distribute (with the assistance of Kingdom Workers personnel) emergency supplies to those in the hardest hit areas.

The CA&R director of operations, Mark Vance, was dispatched in March to do an initial assessment and to meet with the Mission team and leadership of the LCCA to determine a disaster response plan for the near future. The LCCA leadership identified maize (food) as their greatest need because most of the corn crops had been washed away with the flooding.



A response plan was coordinated that would deliver over 450 tons of maize to more than 4,700 families in 21 different areas of the country. The focus of the plan was to bring enough maize to each family to assist them in making it through the crucial months of September through January. A food distribution project of this magnitude in a foreign country had never been attempted by the WELS before.

Purely by the grace of God, the last of the 10,000 bags of maize were delivered to the last village on October 26th. This challenging project was completed on schedule and within budget.

Every time Mark Vance addressed an LCCA congregation or village he shared with them, "This gift of love and compassion comes from your fellow Lutherans back in the US and around the world." And their response was always, "Please send our thanks and love to our brothers in sisters when you see them."

To watch the video visit, vimeo.com/147614102.

Nepal Earthquake Aid



On April 25th a 7.8 earthquake rocked the country of Nepal killing over 8,000 people and injuring many more. Our sister church, the Confessional Evangelical Lutheran Church of Nepal had 10 churches that were destroyed along with virtually all the homes in villages affected by the quake. 29 members were killed. Some of those members died while attending worship as walls collapsed on them. Christian Aid and Relief sent \$32,000 for immediate relief supplies as requested from the leaders of the CELC of Nepal.

Counselors from WLCFS - Christian Family Solutions, John Schuetze and Anita Smith, arrived in Nepal on February 4 to hold a workshop to provide trauma and grief counseling to men, women, and children affected by the earthquake and its aftermath. The purpose of the workshop was to bring comfort to the survivors - so that they will receive healing for their trauma and grief - and in turn share what they learned with others when they return to their villages. Counselor Anita Smith shared, "there is joy here despite all the losses they have suffered."

FY 2016-17 Humanitarian Aid Grants

During the June 2016 meeting, WELS Christian Aid and Relief will approve humanitarian aid grants for FY 2016-17. Last year \$332,064 was approved in support of these projects which help our home and world missionaries build relationships to share the Gospel by meeting community needs. Humanitarian Aid is used to dig fresh water wells, fund health clinics, provide for orphans, develop community gardens and welcome legal immigrants to our churches and communities. We thank you, our members, and our gracious Lord, for allowing us to increase our support for these Gospel bridge building projects.



SUMMER 2016

WISCONSIN LUTHERAN SEMINARY SPOTLIGHT

INTERNATIONAL RECRUITMENT DIRECTOR

Currently over 300 groups from around the world are asking for support from the seminary as well as WELS home and world missions. The type and scope of service being requested was beyond the ability of current mission fields to follow up on and beyond the seminary's current configuration to respond to.

In March, the Joint Mission Council called Jon Bare to serve as the seminary's International Recruitment Director, and he will begin his work this summer. His role is not as a professor in the classroom. Instead he will focus on coordinating efforts and providing his help so that we better respond to fellow Christians worldwide in their desire for confessionally Lutheran pastoral training.

SENIOR THESIS PRESENTATIONS AND AWARDS

As part of the requirement for graduation, each senior completes a thesis—a capstone paper in an area of their choosing. During the first two seminary years and during the vicar year, students look for an area of theology or ministry that interests them. They are encouraged to work with WELS congregations or ministries on research that will benefit the church body. Throughout their senior year, under supervision of an advisor, they research and write the thesis.

In April, the students presented their research and papers to the students on campus. The diversity of the theses reflects the diversity of the students' interests within the body of Christ.

Each year, the faculty also hand out the Timothy and Titus Awards for two of the papers. Both Timothy and Titus were "sons in the faith" to the Apostle Paul, and the awards reflect how the seminary continues to train the next generation of those who will preach the gospel. This year, the winners were Kurtis Wetzel and Matthew Rothe.

All the senior theses can be found at essays.wls.wels.net.

UPCOMING EVENTS

June 20-July 1: **Summer Quarter**

Aug 24, 7 pm: **Opening service**

Aug 25: **Classes begin**

Sept 19, 11 am: **WLS Alumni Meeting**

Sept 19-20: **Symposium**

Sept 30-Oct 3: **Midterm break**

Oct 1: **Friends of the Seminary Day**

Oct 21, 9:20 am: **Prof. Korthals and Prof. Tiefel 40th Anniversary Service**



A SYMPOSIUM ON HERMENEUTICS

The practice of hermeneutics, or biblical interpretation, has always been a vital skill for Christian pastors. How much more so in our current society where words and their meanings are constantly being bent, ignored, or challenged. The 2016 symposium will focus on this vital issue in the work of a pastor. This year's symposium will be held on Monday and Tuesday, Sept. 19 and 20, in the auditorium.

Pastor Steven Lange of Louisville, KY, will focus on hermeneutics in its more theoretical aspects. Pastor Benjamin Tomczak of Sioux Falls, SD, will discuss the relationship of the confessions to the Holy Scriptures. Pastor Daniel Waldschmidt of Burlington, WI, will share what is meant by the New Perspective, a movement that has brought a new interpretation to several key elements of Paul's theology.

The fee for WELS and ELS pastors is \$60 (\$30 for retired pastors). Online registration will begin after July 1, 2016.



VICAR IN MISSIONS UPDATE: CRAIG BIRSCHING

As part of the Vicar in Missions program, Craig Birsching is spending a year at Cross of Life, Mississauga, Ontario.

One highlight for him was from Cross of Life's March Break Camp, the time when all schools have off for one week. Because most parents still work, the congregation holds a camp. "Monday through Friday we load kids onto buses and take them to various fun places and take care of them for the day. It's kind of like taking five field trips in a row. Of course a devotion is always central to every day's activities," he says. This year, they set a record with over 130 kids enrolled in camp.

"In a place like Mississauga where most people have no time for God or religion, it is a wonderful way to build relationships with these kids and their parents and to share the gospel with them," he shares. "It also gets our name out into the community in a positive way since the service we provide is very helpful for families who need somewhere for their kids to go during March Break."

GROW IN GRACE: THE INSTITUTE FOR CONTINUING EDUCATION

PASTOR PARTNERS MENTORING

Just as with any other part of the body of Christ, pastors are blessed by the support, encouragement, and prayers of other members. As we seek to better understand their needs and how to help, Grow in Grace has increased support for pastors who are just beginning their public ministry. This additional support, headed by the Pastor Partners initiative, was adopted by our synod at its 2015 convention.

Pastor Partners pairs an experienced pastoral mentor with a recent seminary graduate. These mentors provide regular support for a new pastor. Mentors do not replace the role of circuit pastors or fellow brothers in the ministry, but instead provide a complimentary outlet for a new pastor. Through this program, mentors can often strengthen and build relationships between young pastors and other brothers in their area.

One future goal of this initiative is to study the wisdom of offering trained pastoral coaches to experienced pastors who would like structured and intentional support as they continue growth in all their callings.





WISCONSIN LUTHERAN SEMINARY

GROW IN GRACE

Through Grow in Grace, Wisconsin Lutheran Seminary partners with pastors for lifelong growth in all their callings. To accomplish that, Grow in Grace offers:

- **Courses & Seminars:** The seminary offers Christ-centered, accessible, and ministry-impacting courses and seminars on campus, online, and at satellite locations.
- **Mentoring & Retreats:** Through Pastor Partners, our seminary graduates are connected with seasoned pastors who mentor them during the first three years of ministry. For established pastors, retreats are held for those celebrating ministry milestones—their three, ten, and twenty-five year anniversaries.
- **Strengthening Ministry:** Each year, essay and resource packets are available for pastors to study individually or with others to honestly evaluate all their callings. These resources assist pastors in areas of life and ministry.
- **Growth Resources:** The Grow in Grace website provides ministry-impacting informal resources. From book reviews to featured pastoral circuits, these support individual pastors or groups of pastors to carry out spiritual and professional growth.

Each fall, these mentors gather for encouragement and training. Through Pastor Partners, experienced men provide regular and focused ongoing support to young pastors.



TRADITIONAL PROGRAM

Our four-year program includes three years of on-campus study and a one-year internship, known as vicar year. For classroom study, faculty members lead students through a thorough study of Scripture.

- **Biblical Theology:** Before our students graduate, they've studied all the books of the Bible.
- **Practical Theology:** Students learn how to shepherd and equip God's people through preaching, leading worship, teaching Bible classes, visiting the sick, and making evangelism calls.
- **Historical Theology:** These courses include the history of the Christian Church from Jesus' time until today. They also learn about the Lutheran Confessions.
- **Systematic Theology:** Students study all the doctrines of the Bible in an orderly way.

Time spent in classrooms is balanced with practical experience in congregations. By working with local congregations or in cross-cultural and international experiences, students' passion to reach the lost increases.

Each year, juniors and middlers are assigned to nearby congregations to both observe and participate in ministry. The vicar year is spent with a supervising pastor, learning the challenges and joys of being a pastor. Some students participate in summer assistant opportunities or serve as part-time assistants their senior year.



Greg Sitzman learns about the worldwide work of WELS at Mission & Ministry. This three-day event helps students discover what resources and ministries are available to support them when they serve as pastors.

A GLOBAL CENTER FOR THEOLOGICAL LEARNING

MISSION ZEAL | DEDICATION TO THE PURE GOSPEL | ACADEMIC RIGOR

PASTORAL STUDIES INSTITUTE

Through the Pastoral Studies Institute (PSI), God is giving us many opportunities to prepare spiritual leaders to serve as WELS pastors and missionaries.

This innovative path of study offers pre-seminary and seminary classes for non-traditional students—including men from different cultures, second-career students, and others whose training path may require flexibility. Classes are offered through one of our satellite training programs, pre-seminary courses taught by local pastors, visiting professors, and course study at WLS.

This year, 17 are taking classes through PSI. In addition, a dozen Anglo pastors are working with PSI pastors and students. Since the program began in 2003, more than 30 men have received diplomas and are now serving in Alaska, Thailand, Wisconsin, Minnesota, Kansas, Texas, and Arizona.



Pastor Pheng Moua, from Immanuel Hmong Lutheran in North St. Paul, Minn., reminded Asian Conference attendees about the importance of “The Message of the Missionary.”

WORLD MISSION SEMINARY PROGRAM

The seminary has a variety of relationships with overseas ministerial education programs. In some places, seminary professors teach in programs overseen by our missions or sister churches. In other places, WLS sends teaching professors and grants a degree in a program administered jointly with a national church. In still others, national students who live overseas take WLS courses online.

In 2015-2016, seven different members of the WLS faculty taught and consulted on curriculum and instruction for theological training programs of our fellowship around the world. Included were pastor training programs in East Asia, Ethiopia, Germany, Hong Kong, Japan, Kenya, Malawi, Nepal, and Zambia. Ten different courses were administered to over 100 pastoral candidates, as well as 100 pastors and lay people.

Since the program began in 2006, our professors have served as guest instructors in Zambia, Malawi, Hong Kong, Japan, Taiwan, Ukraine, Sweden, Mexico, Germany, Bulgaria, Colombia, India, Nepal, and Nigeria.



A translation course was held at Asia Lutheran Seminary in January 2016. Translators improved their skills and built deeper relationships with other translators who serve throughout Asia.

Since 1863, Wisconsin Lutheran Seminary has prepared over 3,500 pastors. The seminary is supported by the mission offerings of WELS congregations, the students' tuition, and gifts of love from friends and donors. To support your seminary, contact wls@wls.wels.net.

IN FOCUS

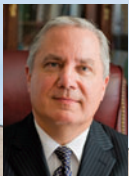
MARTIN LUTHER COLLEGE

Dear colleagues in faith and in witness to the ascended Lord Christ!

Jesus turns meetings from the mundane to the magnificent. Our Savior promised, *where two or three come together in my name, there am I in the midst of them.* That changes your perspective for your convention. How exciting these next days are! Jesus is with you, and you may be confident that, because of his grace, he will bless your discussions and your fellowship, to his glory and for the good of his kingdom. *In all things God works for the good of those who love him, who have been called according to his purpose.*

Please accept this report from the WELS College of Ministry as an effort to communicate our partnership with you in the Great Commission and to demonstrate our accountability to this church body that so generously supports MLC in prayers and offerings. Rejoice with us as you read the many things a gracious Lord God accomplishes for his church at MLC in spite of the frailties and foibles of weak humans. And continue to pray for us. Pray that the Spirit keep us all faithful to the inerrant Word of the living God. Pray that Jesus raise up more and more servants of this powerful Word who will go and reach souls with the *peace that passes all understanding.*

May Jesus, our great Good Shepherd, guide your convention and provide all you need for the gospel efforts in your district.



In Christ,

Rev. Mark Zarling
President, Martin Luther College

Focus on
Southeastern Wisconsin
Page 8

FOCUS on FACULTY

Retiring summer 2016



Prof. Lyle Lange
WLS '69
Professor of theology and
history/social science
DMLC 1978-1995;
MLC 1995-2016



Dr. Wayne Wagner
DMLC '72
Professor of music
DMLC 1979-1995;
MLC 1995-2016

Celebrating ministry anniversaries

- Professor **Paul Tess** DMLC '77: 40 years
- Professor **Keith Wessel** WLS '91: 25 years
- Dr. **Jeffery Wiechman** DMLC '90: 25 years

Newly called for 2016-17

- **Craig Hirschmann** DMLC '84
(professor of music)
- **Greg Holzhueter** MLC '11
(professor of math & PE, basketball coach)
- **David Scharf** WLS '05
(professor of theology)
- **Not Yet Filled**
(director of Early Childhood Learning Center)

The Workers Are Few

Our Lord Jesus' words in Luke 10:2 ring especially true today: "The harvest is plentiful, but the workers are few. Ask the Lord of the harvest, therefore, to send out workers into his harvest field."

Although enrollment at the WELS College of Ministry is stable, and rising applications seem to signal larger classes in the future, the need for pastors and teachers is still very great.

As of this writing, Call Day 2016 has not yet occurred, but in 2014 and 2015, 85 teacher requests went unfilled and 35 pastor requests went unfilled.

"There is a critical need for both pastors and teachers," President **Mark Zarling** WLS '80 says. "Right now we have 94 parish vacancies. As pastors of the Boomer Generation retire, we will not have enough young men trained to take their places. During the 1975-85 decade, 550-600 candidates graduated from WLS; 40 years later, in 2005-15, only 367 have graduated from the MLC preseminary track, having four more years of training ahead of them.

"The need for teachers is also critical. We have 130 vacancies right now, and expansions are being planned that will require even more."

For example, Principal **Ben Troge** MLC '02 at Divine Savior-Doral FL writes: "The Lord has presented us with growing opportunities for Christian education in Florida. And we rely on MLC-trained teachers to seize these opportunities. In the next year Divine Savior will need an additional 6-9 teachers. In the next four years, we'll need 40-60 additional teachers. If God continues to bless our future outreach and expansion efforts as he has in the past, those 40-60 new teaching positions may very well increase significantly."

President Zarling urges: "Encourage your young people to consider serving their Lord in the public ministry of the gospel. Support current MLC and WLS students with a note or a gift. And continue to pray to our Lord, who gifts us with pastors, teachers, and staff ministers."

Ten Years of Thalassa

2016 marked the tenth anniversary of the MLC Thalassa Prize, a contest that awards \$1,000 to the best photo-and-essay submission from an MLC student or graduate who has served in an international ministry. The winner keeps half of the prize and designates the other half to an international mission of their choice.

The prize was funded by anonymous donors for the first eight years and by the MLC International Services Office in 2015 and 2016. In honor of the tenth anniversary, the prize was doubled to \$2,000.

Johannah Crass MLC '14 won the 2016 prize with her entry, "White Robes." Johannah, who has served a year in Russia and a year in Antigua, designated \$1000 of her prize to the WELS mission in Russia.

Winning photos and essays may be found at mlc-wels.edu/thalassa/past-winners

Strategic Planning

Looking Back

In 2011 MLC embarked upon the strategic plan "Compelled to Speak." Under God and by his grace, we fulfilled many initiatives:

- Built Early Childhood Learning Center.
- Established second master's degree (educational administration).
- Established undergraduate special education major, Chinese language minor, and urban educational ministry minor.
- Expanded continuing education courses and enrollment.
- Developed plan for campus maintenance, renovation, expansion.
- Increased number of private scholarships.
- Hired financial literacy coordinator.
- Began intergenerational ministry at Highland Regency House.
- Established International Services Office.
- Expanded recruitment of minority, international, home school, and public school students.

We continue to work toward these goals:

- Increase faculty PhDs to 40%.
- Enroll 800 undergraduate students.

Looking Ahead

Now we ask for our Lord's guidance again as we begin work on a new strategic plan for 2017-2023. Synthesizing input from different agencies, data from various assessment tools, and the objectives outlined in our Master Site Plan and Master Staffing Plan, we will begin to formulate a vision for the next six years.

Thank you for your prayers and your support as we continue to prepare gospel heralds who are fully prepared to meet WELS ministry needs.



New Master's Degree: Educational Administration

Enrollment is rising in both tracks of the new master's degree in educational administration.

Principals and early childhood center directors have similar job descriptions and so can attend many of the same courses, such as "Leadership for Change."

But they also face unique challenges and opportunities, and different courses have been developed to address those distinctions.

MS-EDUCATIONAL ADMINISTRATION COURSES

Principal Emphasis	ECE Director Emphasis
Educational Leadership	
Supervision of Instruction	
Leading the School Community	
Leadership for Change	
School Business Administration	
Foundations of Educational Research	
The Principalsip	The Director as Leader
Curriculum Design and Implementation	Early Childhood Curriculum
Instruction and Assessment Electives	Development of Young Children
School Law	Legal & Ethical Issues in Early Childhood

The vision is that every WELS principal and ECE director be fully trained prior to receiving a school leadership call. This new master's degree is helping fulfill that vision.

New Financial Literacy Program



The new position of financial literacy coordinator was created at MLC in 2015 in response to the WELS Conference of Presidents' concerns about graduates' debt.

JoElyn Krohn fills the position. Primarily, she meets with students at pivotal times in their college careers—their first year and their graduation year—to discuss their financial situation and help them understand the best ways to keep their college loan debt low and pay it off quickly.

She also teaches students through an online curriculum called CashCourse. Krohn's smart use of that program earned MLC national recognition and a special grant.

"Our goal is to help students make smart decisions in college and to transition to life after college with as little stress and as few financial constraints as possible," Mrs. Krohn says. "This will not only help the individual students, but we pray it will also have a positive impact on our congregations, schools, and synod."

MarketWatch notes that nearly 70% of American graduates had student loan debt in 2015, the average being \$35,051. For those 2015 MLC graduates with debt, the average was \$25,519.

MLC and WLS: Training New Pastors Together

Faculties from Wisconsin Lutheran Seminary (WLS) and MLC met in La Crosse, Wisconsin, in February to review the coordination of MLC's preseminary program with the seminary program. Topics included Spanish study, writing skills, financial literacy, and student health issues.

In 2015-2016 MLC preseminary juniors and seniors visited WLS, and many WLS students came back to MLC throughout the year to encourage their brothers on the path to the pulpit.



Tour Our New Website!

A college's website is usually the first point of contact for potential students, parents, and other friends of the institution—and first impressions count. That's why so much research and development went into MLC's new website. It's mobile-friendly, smart looking, and easy to navigate. Take a look! mlc-wels.edu/website-tour



FIRST-YEAR STUDENT PROFILE

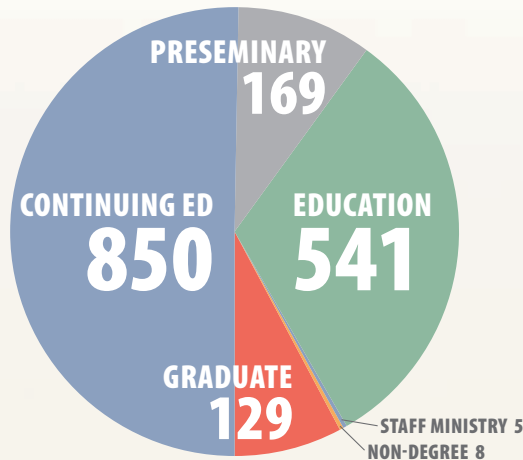
3.46 Average HS GPA
24.3 Average ACT

GRADUATES

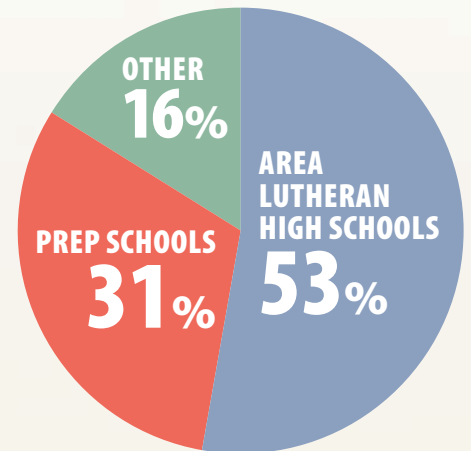
DEC 2015 **22** Education

MAY 2016 **40** Preseminary
92 Education

ENROLLMENT: 1702



UNDERGRAD STUDENTS BY HIGH SCHOOL



RESIDENTIAL LIFE

99% LIVE ON CAMPUS

Allowed:

Verboten:



ATHLETICS

1/3 Play NCAA D3 athletics

1/2 Play intramurals

84 First-semester Academic All-Conference Awards (GPA 3.5-4.0)

MUSIC

1/2 Students take piano or organ lessons



1/10 Play in wind symphony

1/3 Sing in a choir

1/10 Participate in fall musical

RECRUITMENT VISITS

ON CAMPUS

- 770** HS students attended Focus on Ministry weekends on campus
- 46** Individual HS students visited campus
- 262** Elementary school students visited campus

OFF CAMPUS

- 9,000+** HS student visits conducted by MLC admissions counselors

DAYLIGHT USA MINISTRY ASSISTANCE

- 35** Students participated (decrease from previous years)
- 23** Congregations received assistance
- 15** Different states served, from New York to California, from Alaska to Florida



60% MLC students participated in Daylight USA before they graduated in the last decade

CONTINUING ED

850 students (mostly called workers) served **231** courses (on campus, online, and on location)

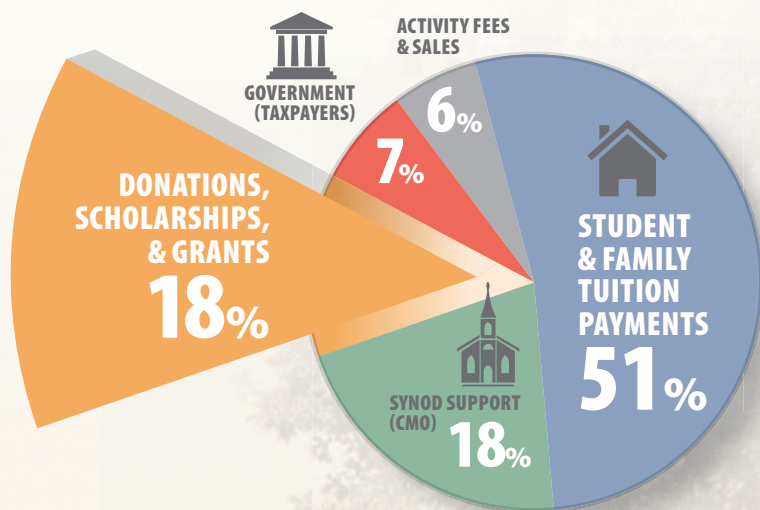
GRADUATE STUDIES

- 11** Years in existence
- 2** Degrees
- 92** Master's degrees granted
- 21** Degrees granted 2015-2016
- 129** Graduate students
- 53** Graduate courses
- 31** Graduate professors



NOON, & KNIGHT

BUDGET FUNDING



TUITION, ROOM & BOARD

2015	Tuition	\$13,570
2016	Room & Board	\$5,350
	Total	\$18,920

2016	Tuition	\$13,980
2017	Room & Board	\$5,510
	Total	\$19,490



Tuition increase 3%
Financial aid increase 5%

FINANCIAL AID

\$2.2 Million institutional aid given

- 370 need-based grants (average \$3,140)
- 545 merit-based scholarships (average \$1,680)
- 146 distance grants (average \$670)

\$950,000 private grants and scholarships given

- \$100,000 from **privately funded competitive scholarships**
- \$550,000 from **congregations, districts, and high schools**
- \$220,000 from **other service organizations** such as MLC Ladies' Auxiliary, OWLS, Antioch Foundation
- \$80,000 from **Salem Lutheran Foundation**

96% students receive scholarships, grants, loans, and/or work-study funds.

CAMPUS SPIRITUAL LIFE

10 chapel services per week in Chapel of the Christ PLUS



- Special worship & communion services
- Theology courses, required & elective
- Bible studies, formal & informal
- All courses centered on Christ & keyed to ministry



MLC RANKED NATIONALLY FOR QUALITY & AFFORDABILITY

Thanks to your special gifts and congregational offerings, MLC is able to keep the cost of education low—so low, in fact, that we've received national attention.

Washington Monthly

Ranked in top 10 in the nation in *Washington Monthly's* Best-Bang-for-Your-Buck Baccalaureate Colleges.

MONEY

Ranked #52 (top 4%) in *MONEY* magazine's "Best Colleges" in the nation based on quality, affordability, and alumni earnings.

USA Today

Ranked #4 in nation by College Factual, as reported in *USA Today* article, "Best 10 Colleges for the Money."

GoGrad

Master of Science in Education online program ranked #18 in nation by *GoGrad*.

Top Education Degrees

Ranked 9th in nation by *Top Education Degrees'* listing, "50 Most Affordable Small Colleges for a Master's in Education 2016."

Support Your Congregation's MLC Students!

New Congregational Partner Grant Program

Through the MLC Congregational Partner Grant Program, congregations can encourage and support their members who want to prepare for the public ministry at Martin Luther College.

The congregation awards a grant to students newly admitted to MLC, and MLC matches that grant up to \$1,000 per student.

For more information and the application form, go to mlc-wels.edu and type "CPGP" in the search box.

Develop Congregational Leaders Through CAP

The WELS Congregational Assistant Program (CAP) assists pastors and staff ministers in training qualified leaders in their congregations.

CAP offers a range of biblical and practical courses to all WELS members, men and women, to help them grow in the grace and knowledge of our Lord and Savior Jesus Christ. Many CAP students are already serving, which means they are applying what they learn immediately in their local settings.

CAP by the Numbers

64 Students

45 Congregations

18 States

90 Leaders who have completed the program

CONGREGATIONAL ASSISTANT PROGRAM

More information: welscap.org

Questions: welscap@mlc-wels.edu

Sports Performance Training 5-Day Workshop

June 20-24, 2016 8 am – 4 pm



REGISTER NOW at mlc-wels.edu/go/spt



WELS National Physical Education Conference

September 22-23, 2016
La Crosse WI Convention Center
mlc-wels.edu/go/peconf



MLC Professional Development Series

Ready-to-go spiritual and professional faculty inservices

Each *Professional Development Series* inservice contains a year's worth of modules that you custom fit to your schedule. Faculties receive access to all video and print resources online.

NEW **Six Highly Effective Teaching Strategies** (6 modules)
Increasing student achievement is possible! Each module presents a research-proven strategy and follow-up activities to implement it.

Getting to Know the WELS Teaching Standards (11 modules)
This series helps WELS teachers and principals understand each WELS teaching standard and its intended use.

The Foolishness of God: A Biblical Perspective on Science (6 modules)
Guided discussion provides Bible-based guidance on ethical issues that teachers can pass on to their students.



Choose one of these inservice series for your 2016-2017 school year! Register NOW!
mlc-wels.edu/continuing-education

Hebrew Courses at Martin Luther College Summer 2016

HEB9001 Hebrew Institute

An upper-level course in biblical Hebrew for parish pastors with a strong interest and ability in Hebrew and for those currently teaching Hebrew in the fellowship of WELS.

Dates: July 11-15, 2016

Instructor: Prof. Thomas Nass

HEB9002 Hebrew Review

Review of Hebrew grammar, verb analyzation, and vocabulary. Translation of two to three chapters of historical prose.

Dates: July 11-15, 2016

Instructor: Prof. Mark Paustian

Tuition for Either Course:

\$305, includes fees

Room and Linens for the Week: \$65

Lunch Plan: \$25

14-Meal Plan: \$60

mlc-wels.edu/continuing-education

InFocus Staff

WRITER/EDITOR

Laurie Gauger DMLC '87

STUDENT ASSISTANT

Kylah Schroeder MLC '18

STUDENT PHOTOGRAPHERS

Jonathan Witte MLC '18

Shelby Pitt MLC '19

Adam Marley MLC '17

GRAPHIC DESIGNER

Lime Valley Advertising, Inc.

Office of Mission Advancement

VICE PRESIDENT

Michael Otterstatter WLS '94

PUBLIC RELATIONS DIRECTOR

William Pekrul DMLC '80

ALUMNI DIRECTOR

Steve Balza DMLC '93

College Administration

PRESIDENT

Mark Zarling WLS '80

VP for ADMINISTRATION

Steven Thiesfeldt DMLC '74

VP for ACADEMICS

Jeffery Wiechman DMLC '90

VP for STUDENT LIFE

Jeffrey Schone WLS '87

VP for MISSION ADVANCEMENT

Michael Otterstatter WLS '94

Governing Board

Chairman Michael Woldt WLS '81

Vice Chairman Jonathan Kolander WLS '91

Secretary Steven Rosenbaum DMLC '86

Joe Archer DMLC '77

Dale Krause

Timothy Petermann

Barry Price

Duane Schmeichel WLS '91

Michael Seifert WLS '03

David Uhlhorn MLC '99

Michael Valteau

Steven Vasold MLC '02

Mark Wessel WLS '86

ADVISORY:

Charles Degner WLS '79

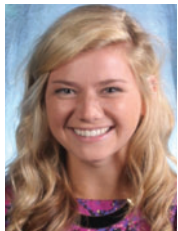
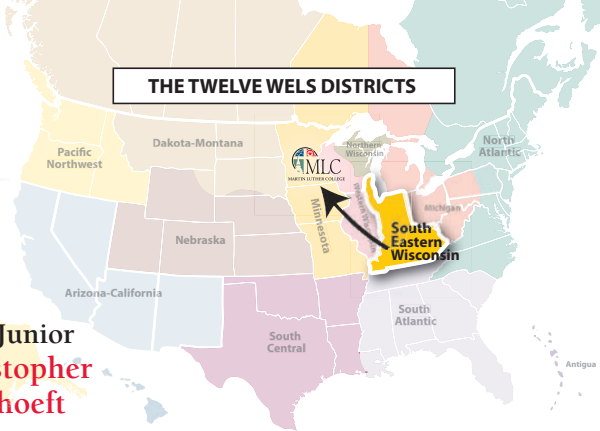
Randy Matter

Paul Prange WLS '88

Mark Schroeder WLS '81

Mark Zarling WLS '80

MLC InFocus is published by Martin Luther College Mission Advancement Office and is distributed free of charge to students, faculty, staff, alumni, parents, and friends. Owned and operated by the Wisconsin Evangelical Lutheran Synod (WELS), Martin Luther College exists to serve the ministerial needs of the WELS. Comments are welcomed and should be directed to gaugerlf@mlc-wels.edu or Laurie Gauger, MLC InFocus, 1995 Luther Court, New Ulm MN 56073.



Meet Graduate
Kayla Schoeneck

Star of Bethlehem-New Berlin WI

Majors: Elementary Ed /
Communications Arts & Lit

“During the summer of 2014, I went to Malawi for three weeks. Teaching the Malawians the love that their Savior has for them was a humbling experience that reminded me how blessed we are to know God’s love and the importance of sharing that love with everyone.”



Meet Junior
Christopher Pflughoeft

Bethlehem-Menomonee Falls WI

Major: Preseminary Studies

“I never could see myself being a pastor until I had Pastor Ron Mehlberg for senior religion at KML. Every story he shared sparked an interest in my mind. He was a great role model in that he made us know pastors are not always perfect, and I finally could see myself doing that work someday.”

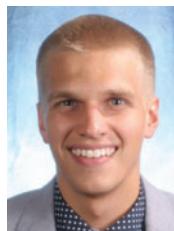


Meet Senior
Hannah Midthun

Grace-Milwaukee

Majors: Chemistry / Life Science

“EFE is a great opportunity to have a sneak-peek of the public ministry. The low-pressure environment of EFE II helped me to feel really confident that I wanted to become a teacher in a WELS school. MLC offers so many different opportunities for students to get out into the field and experience the public ministry firsthand.”



Meet Junior
Eric Uher

Mt. Calvary-Waukesha WI

Majors: Elementary Ed / Secondary Social Studies

“Since my first day on campus, I feel that MLC has helped me mature both socially and spiritually. The atmosphere is Christ-centered and people-centered, which is exactly where all our lives ought to be. Serving Jesus by serving others.”



Meet Sophomore
Eric Dorn

Trinity-Crete IL

Major: Elementary Ed

“Almost my entire family is called workers, and I wanted to break from that. I was a business major at a different college, but after two years I found I wouldn’t enjoy that as a career, and I transferred to MLC. Now I’m learning how I can share the love of Jesus with my future students. I can’t think of anything more exciting than that.”



Meet First-Year
Kerigiti Jackson

Atonement-Milwaukee

Major: Preseminary Studies

“During the senior chapel for our high school, Pastor Aaron Robinson talked about how there aren’t many African-American pastors in the WELS. I felt that it was my duty to change this.”

SOUTHEASTERN WISCONSIN DISTRICT

& MLC in 2015-2016

- Enrollment: 125
- Graduating Seniors:
3 preseminary, 25 education
- Visitors to Campus:
89 high school, 40 elementary
- Daylight USA participants: 11
- Governing Board members:
Michael Woldt WLS '81 (*chair*),
Jonathan Kolander WLS '91 (*vice chair*),
Joe Archer DMLC '77, Paul Prange WLS '88 (*advisory*),
Randy Matter (*advisory*)



Luther Prep Update

Summer 2016



LPS Class of 2016

Dear Brothers and Sisters in Christ,

How did it go at LPS this past year? Wonderful! Of course, to the human eye not everything was always pretty, neat, and clean. Yet the gospel was daily preached and in it the adornment of Christ's holiness, righteousness, and redemption was received....*"a radiant church, without stain or wrinkle or any other blemish."* (Ephesians 5:27)

We offer our thanks to God that all of our 112 graduates considered the full-time ministry during their years at LPS. In these days of increasing pastoral and teaching vacancies we are grateful that through the Spirits' gospel work more than 60% of the 2016 graduates will enroll at MLC next fall.

Matthew A. Ren

President, Luther Preparatory School

Support our Mission
Pray for our synod schools and their work.
Encourage a young person to consider full-time Gospel ministry.

I thank God every time I remember you. In all my prayers for all of you, I always pray with joy because of your partnership in the gospel from the first day until now.

Philippians 1:3-5

The Lord of the harvest still needs workers



LPS Chapel May 15

The chapel refurbishment continues. If all goes according to schedule, the chapel will be finished and the enhanced organ will be installed before school starts next fall.

A dedication service is being planned for Sunday, September 18.

Organ Refurbishment Fund
\$425,000 received
of \$500,000 needed

LPS Quick Facts

Class of 2016 has 112 graduates
67 will enroll at MLC
26 boys in pastor track
41 in teacher track

Project Timothy 2016
48 participants
9 locations in CA, GA, VA, TX,
Canada, Antigua, and St. Lucia

MLC Class of 2016 had 34 graduates from LPS. Twelve men will continue their preparation at WLS, sixteen received calls to teach, and thirteen grads from previous years were assigned or reassigned.



Gala



Musical



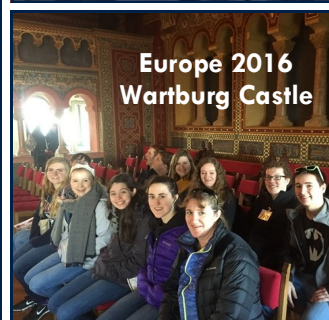
Children's Theater



Commencement Concert



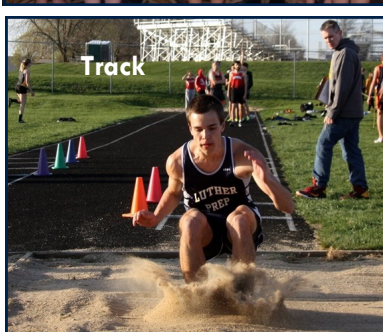
Top Ten Seniors



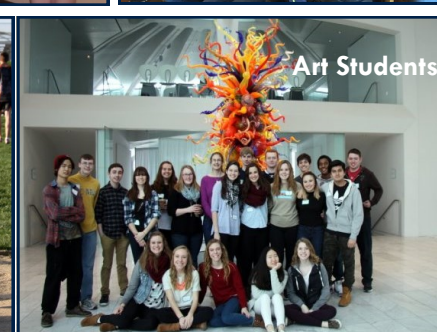
Europe 2016
Wartburg Castle



Spring Fling Dance



Track



Art Students



**Bonus for those
registered
by June 30
920-262-8104**

Save the Date!
Saturday, July 30
Phoenix Golf Classic X
Windwood Country Club - Watertown

2016-2017 LPS SCHOOL EVENTS

August

19-20 LPS Registration Weekend
21 Opening Service 1:30pm in LPS Gym
22 Classes begin

September

18 Chapel Organ Dedication Service
30 Homecoming Weekend Activities

November

11-13 East Regional Choral Fest at LPS

Our Mission

Michigan Lutheran Seminary exists to give teens the opportunity to train for the full-time ministry of the gospel. Our role, so well aligned with the other three ministerial education schools of the WELS, ensures the supply of young men and women whose training enables them to carry out the great commission of our Lord.

A System Worth Preserving

The Wisconsin Synod has a unique and valuable gem in our four-school, three-tiered system. This system, unlike any other, is praised and envied by other churches. It continues to supply well-trained workers to a world that more desperately needs their message with each passing year.

A Message from *the President*

Eighteen of our forty-four graduates from the class of 2016 are planning to go on to MLC to continue their training for the full-time ministry. Four of these graduates will be going into the pastor track. Those eighteen represent 41% of the class, close to our historical average of 45% going on into the ministry. At the moment about 60% of the class of 2017 are indicating strong interest in the public ministry. Others from these classes will go into the military, be medical professionals, engineers, veterinarians or a variety of other occupations. These are all ways in which our young people will go on to serve their Lord. But our purpose is to encourage young people to continue at MLC and go on into the public ministry of the gospel. This is the purpose we constantly keep before our students and the members of the WELS. We are one of your high schools of ministry. You support us with your mission dollars because of that purpose. We praise the Lord of the church that we are privileged by his grace to continue to carry on that special purpose for our synod. Having well-trained pastors, teachers and staff ministers who have a heart for the spiritual care of people has been a desire of the Lutheran church since its beginnings in America. It is no small thing that that purpose has been carried out on this campus since 1887. To God alone the glory!



Serving Jesus with you,
Joel V. Petermann
Joel Petermann, President

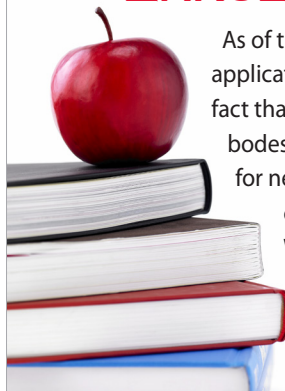
MARTIN LUTHER STATUE

The trees have been removed. A site plan has been developed. New landscaping is planned. By the end of the summer, a new statue of Martin Luther, God's tool for his reformation of the church, will be standing in the mall area off of Hardin street between the administration office and the triple doors that lead into the commons on our campus. This statue and granite base on which it will stand were a gift from a group of donors which they presented to the governing board. The bronze statue of Luther will be about the same size as the Martin Luther statues at MLC, WLS and LPS, except that the likeness of Luther will be from a different period of his life and will look slightly different than those statues. We are grateful to these generous donors. The statue of Luther will remind us daily that the Lord gives gifts to his church to keep it faithful to his Word so that the good news of the redemption won by Jesus Christ may never be lost.



ENROLLMENT INCREASE

As of the time of this writing, MLS has 66 applications for the class of 2020. Considering the fact that the graduating class will only be 44, this bodes well for a significant increase in enrollment for next year. In addition, we have four upper class transfers in for the next school year. We thank the Lord for this blessing on the hard work of our admissions counselors, Prof. Andrew Naumann and Tutor Nathan Moldenhauer this past year.



MLS UPDATE



IMPORTANT DATES

June 1, 2016

Enrollment for the 2016-2017 school year opens for all students

July 20, 2016

Enrollment for the 2016-2017 school year closes

August 20, 2016

Registration and opening service

August 21, 2016

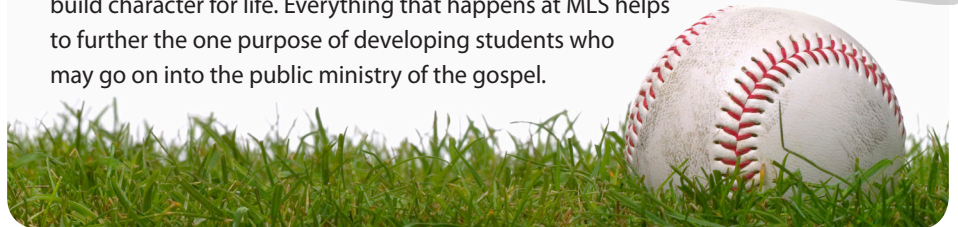
Orientation for new students

August 22, 2016

Classes begin for the 2016-2017 school year

SPRING SPORTS

Our spring sports season is well under way. The weather hasn't always been the best with some cold temperatures continuing to keep its steely grip on Michigan's mid-section. It is a rebuilding year for our baseball and softball teams. Meanwhile many are out for track running or hurdling or throwing to the best of their abilities. Sometimes our teams have winning seasons and sometimes they don't win many games at all. But the teamwork that they are taught, the resilience that they develop, and the leadership that they learn are qualities that are built every year—win or lose. These are all qualities which also are needed in the public ministry of the gospel. Even learning to lose and to fail sometimes are good lessons that help build character for life. Everything that happens at MLS helps to further the one purpose of developing students who may go on into the public ministry of the gospel.



FACULTY CHANGES

We are still calling for faculty to replace the Kocks when they head to Manitowoc at the end of this school year. A new wrinkle came when Prof. Emily Moeller's husband took a job in Texas and so she will resign at the end of the school year. This leaves us without a Spanish teacher. So we are currently calling for a Spanish teacher and since another position was opened on the faculty, we are also calling for a Science professor. Recently Rev. Jeffrey Bonack from Muskego, WI returned our call for him to teach Spanish. Mr. Steve Vasold has also returned the call to teach science.

We also were blessed at the MLC assignment meetings to have two tutors from MLC assigned to MLS. Wesley Towne from Bay City, MI and Elizabeth Jeske from Milwaukee, WI will serve as tutors. Tutor Lauren Maertz was reassigned from MLC and Tutor Josh Schultz was reassigned from Wisconsin Lutheran Seminary for a second year on our campus. At WLS we were blessed to have Caleb Schmeige from

Madison, WI assigned as our admissions counselor/tutor to replace Nathan Moldenhauer who was called to Immanuel, Greenville, WI.

Tutor Justin Eternick was called to be principal apprentice at Trinity, Jenera, OH. Tutor Emily Chandonnet accepted a call during the year to teach at Christ the King, Palm Coast, FL.

May the Lord bless all these servants as they serve at MLS or elsewhere in his kingdom.



Caleb Schmeige



Liz Jeske



Wes Towne



WELS
Christ's Love, Our Calling.

Michigan Lutheran Seminary

2777 Hardin Street
Saginaw, MI 48602
Phone: 989-793-1010
Fax: 989-793-4213

I thank God every time I remember you.
In all my prayers for all of you, I always
pray with joy because of your partnership
in the gospel from the first day until now.

Philippians 1:3-5

Director..... Vacant
 Laura Schulz, serving as Administrative Assistant.....(414) 256-3226
 laura.schulz@wels.net
 Pastor Gary Pufahl, Commission Chairman(262) 744-1619 (M)
 (262) 662-5004 (W)
 pastorp@christbigbend.com

For more information, please look to the WELS Report to the Twelve Districts, pages 48-49.

Mission Statement

Adult Discipleship assists congregations and called workers in helping individuals grow in their relationship with Jesus and become better equipped to use their unique gifts to bring Christ's love and the gospel message into all their daily relationships and activities.

Interactive Faith Bible Studies

The next Interactive Faith Bible Study is scheduled for Wednesday, September 21-October 26, 2016 at 6:00 or 8:00pm CST. Rev. John Braun from Northwestern Publishing House will lead us in the topic: *"What Does This Mean? The Continuing Importance of Luther's Small Catechism."*

We will study the importance of Luther's Small Catechism for our own society and culture. We will review the six chief parts. What does it mean for Christian morality in today's world without moral standards? What does it mean for Christian beliefs in a world where you can believe anything? What does it mean for Christian devotion and our personal relationship with God? What does it mean for our church life as Lutherans when the church appears to be more social than spiritual? The class will start with a little history of the Catechism and its importance in the Reformation and conclude with a discussion of what the future may hold for us and the next generation.

Marriage Enrichment Opportunities

Rev. Randy Hunter offers Marriage Enrichment Courses throughout our synod. For more information on upcoming opportunities, go to the Facebook page: www.facebook.com/welsmarriage. You can also get a list of courses available from our WELS website under Adult Discipleship.

We would like to make congregations aware of a resource for congregations and individuals at www.graceformarriage.com. The marriage enrichment retreats that Pastor Hunter has led are now available online. You can use these marriage enrichment resources as individuals or as congregations. Check it out at www.graceformarriage.com.

Women's Ministry Conference

The Women's Ministry is organizing a National Conference at Wisconsin Lutheran Seminary for July 21-23, 2016. This conference is designed to create pathways to service for women who desire to serve God to their full potential in the capacity God designed for them.

The Women's Ministry has also developed prayer pamphlets entitled "Prayers for Your Husband" and "Prayers for Your Wife." These pamphlets are available for purchase at Northwestern Publishing House as well as through our Women's Ministry.

Commission Executive Team:

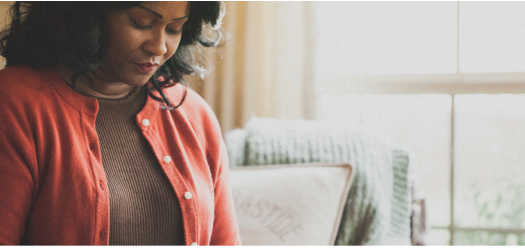
Gary Pufahl - chair
 Aaron Boehm
 David Wenzel
 Jon Bergemann
 John Vieths

District Coordinators:

Paul Schulz (AZ-CA)
 Jay Bickelhaupt (D-M)
 Glenn Rosenbaum (MI)
 Dan Voigt (MN)
 Brett Krause (NE)
 Wayne Halldorson (NA)
 Gregory Stahlecker (NW)
 Fred Schleg (PNW)
 Ben Kratz (SA)
 Jeremy Belter (SC)
 Vacant (SEW)
 Chris Koschnitzke (WW)

Advisory Members

Prof. Steve Geiger (WLS)
 Prof. Ross Stelljes (MLC)
 Pastor Dan Schroeder (NPH)



WELS Commission on Congregational Counseling

DEMOGRAPHIC STUDY – PRELIMINARY REPORT

Background

As has been reported previously, at the request of the CCC, all WELS congregations were asked to include demographic information when they submitted statistics for the 2015 statistical report. The CCC requested this information for two reasons.

The first reason was to better quantify how many of our congregations are facing what we call the “60/50 challenge,” where the average age of members is 60 or older and the average Sunday attendance is 50 or less. The CCC receives one to two requests per month for guidance/assistance in dealing with this challenge; i.e. the congregation believes it is “aging” out of existence. Occasionally, the request comes from multiple congregations that are considering merging.

The second reason was to fulfill a broad request made by the Conference of Presidents to look at the millennial generation within WELS.

Process

As part of the 2015 statistical report congregations were asked to share, as accurately as possible, how many members they had in each of the following categories.

- 0 to 5 (birth through kindergarten)
- 6 to 11 (elementary school)
- 12 to 17 (middle & high-school)
- 18 to 24 (college & graduate school)
- 25 to 34 (young adults)
- 35 to 44 (adults)
- 45 to 54 (middle-aged adults)
- 55 to 64 (senior adults)
- 65 to 74 (retirement-aged adults)
- 75 to 84 (elderly adults)
- 85+ (aged adults)

Congregations were informed that if they did not keep records like that, and if conducting a survey was not feasible, they were allowed to provide estimates.

Compliance

There are 1271 congregations listed in the 2015 statistical report. 907 (71.4%) supplied the requested demographic data. (Thank you!) When we began to dig down into the 364 congregations that *didn't* submit data, we found that most of them were older congregations in rural areas, i.e. congregations that would probably be more likely to fit the “60/50 challenge.” Therefore, the CCC offices attempted to contact congregations that had not submitted data, asking

them to give a rough estimate of their average age. They were *not* asked to break down their membership into the categories above, but simply to estimate the average age. We received that estimated average age from another 121 congregations.

Therefore, we have at least an estimate of average age from 1,028 congregations, (80.3%). (Note: In some cases, statistical/demographic data for multiple congregations is reported under one congregation, e.g. dual parish settings, multi-site settings. Also, the statistical report contains some satellite preaching stations. When you factor that in, it means we have data for 84.6% of congregational entities.)

Groupings

Thus, when analyzing data, we have three different groupings. Note that Grouping B consist of the congregations in Grouping A, and Grouping C consists of the congregations in both Groupings A and B

Grouping A

This consists of the 907 congregations that submitted broken-down demographic information with the statistical report. We consider this the best source of data.

Grouping B

This consists of the 907 congregations that submitted broken-down demographic information with the statistical report *and* the 121 congregations that provided an estimated average age.

Grouping C

This consists of all WELS congregations. For congregations that did not supply any demographic information, an average age was estimated using comparative projections. The comparison was to congregations from Group A. One example: when you look at Group A and focus in on the churches that have an average age of 60 or higher, you find that they consist on average of 116.8 souls and 100.4 communicants. In other words, on average 14% of their members are souls and the rest are communicants. (By comparison, for the congregations in Group A that have an average age in the 30's, 25.2% of their membership consisting of souls and the rest are communicants.) Therefore, if a congregation that didn't submit demographic information had less than 14% of its membership consisting of souls, that would be one indication that congregation that congregation likely skews older.

Therefore, the analysis of this group must be taken with a grain of salt. The average age projections are largely speculative.

RESULTS

Congregations facing the “60/50 Challenge”

In **Grouping A**, there are 33 congregations that have an average age of 60 or more. **28** of those have an average worship attendance of 50 or less.

Our belief that the congregations which *didn't* submit demographic data as part of the statistical report was proven to be correct, as the number jumps with subsequent groups.

In **Grouping B**, there are 119 congregations that have an average age of 60 or more. **90** of those have an average worship attendance of 50 or less.

In **Grouping C**, there are 128 congregations that have an average age of 60 or more. **107** of them have an average attendance of 50 or less.

In summary, in congregation that provided some sort of data for us (Groupings A&B), there are 90 congregations facing the 60/50 challenge. When you use comparative projections of churches that didn't provide data, relying on data from Grouping A, a conservative estimate is that 107 WELS congregations are facing the 60/50 challenge.

Millennials in WELS

The Millennial generation is not consistently defined. Most studies use 1980 through 1982 as the beginning of the Millennial generation, and 1996 to 1998 as the end. Thus, the Millennial generation would consist of those who are currently 18 to 34 years old approximately. That spans two categories in our survey: college & graduate school (18 to 24) and young adults (25 to 34).

Grouping A accounts for 283,234 WELS members. Of those, 25,377 were listed as being 18 to 24 (8.96%) and 34,385 were listed as being 25 to 34 (12.14%). Thus, **in Grouping A, Millennials would account for 21.1% of the population.** While we do not have generational breakdowns for Groupings B and C, due to the fact that they skew older than Grouping A, **using comparative projections we estimate that the Millennials constitute closer to approximately 19% of total WELS membership.**

While not that many church bodies have congregations fill out demographic info, based on their estimates, that percentage would indicate WELS is approximately the same or slightly better than most Protestant denominations, who typically estimate Millennials to comprise about 17 to 18% of their total membership.ⁱ It would place WELS slightly behind Catholicism, which estimates that Millennials make up about 23% of their population.ⁱⁱ

Synod wide totals

Grouping A – Age Breakdowns

The age breakdowns of Grouping A are as follows.

Age Group	Group Count	% of Total
00 to 05	18565	6.55
06 to 11	24220	8.55
12 to 17	23206	8.19
18 to 24	25377	8.96
25 to 34	34385	12.14
35 to 44	31714	11.20
45 to 54	34650	12.23
55 to 64	35275	12.45
65 to 74	28016	9.89
75 to 84	18289	6.46
85 plus	9537	3.3

Grouping A – Average & Median Age

The average age for Grouping A is 40.9. Average age is calculated using the number in each age range multiplied by the age at the midpoint of that range. The sum of those values is divided by the total count of all age ranges.

The median age for Grouping A is estimated to be 40.7. Estimates were made assuming an equal number of people at each age throughout an age group. By comparison, according to the last census the median age for the United States is 36.8.

Grouping B – Average Age

The estimated average age of Grouping B is 46.1. For Grouping B, the average age for the 907 congregations in Group A was calculated the same way described above. For the 121 congregations that submitted *only* an estimated average age, that number was multiplied by the congregation's total members. “Total years” added together for all congregations, and then those total years were divided by the total number of members.

We felt it would be too speculative to provide an estimated median age.

Grouping C – Average Age

The average age of Grouping C is estimated to be 47.9. The average age for the group was calculated just as it was for Grouping B. However, estimated average ages based on comparative projections were used for congregations that did not fill out the demographic report nor provide an estimated average age of their own.

We felt it would be too speculative to provide an estimate median age.

Comparison to other church bodies

The Pew Forum tracks median age for church bodies. Grouping A (WELS congregations that provided demographic information) tend to skew much younger. Grouping A had a median age of 40.7. The Pew Forum's 2014 Religious Landscape Studyⁱⁱⁱ lists the median age of Evangelical churches to be 50, of Mainline Protestant churches to be 52, and of Catholic Churches to be 49. Again, we felt it would be too speculative to estimate a median age for Groupings B or C.

What about compared to other Lutheran church bodies? A 2008 study conducted by ELCA found the median age of "churchgoers" to be around 58. In an April 2016 paper delivered by Pastor Lawrence Rast, he wrote, "In the LCMS, while one hears wildly diverging estimates, the average age appears to be somewhere around 59 or 60."

We don't want to draw too strong of conclusions from this, as we don't have a median age estimate for Groupings B or C. However, it would seem that WELS skews younger than other Christian church bodies.

THOUGHTS

A balanced view

Let us have a balanced view of this preliminary study.

On the one hand, let us not conclude that because the demographics in WELS seem to skew a bit younger than other Christian church bodies we are the church triumphant. We face some large challenges moving forward, as do all Christian denominations, as America continues to become a post-Christian nation. On top of that, we looked at average age of total membership. We didn't look at the average age of *active* members.

On the other hand, when we look at the challenges our congregations are facing, we sometimes tend to think that perhaps we are doing something wrong. While the CCC stresses the need for ongoing ministry assessment (i.e. gauging what seems to be going well and what we would like to do better), we need to understand that the decline in Christianity in America is something challenging *all* Christian traditions and denominations. We take *no* comfort or pride in the fact that "we aren't hurting as bad as some other churches." We simply note that any declines we are facing is not necessarily a sign of poor ministry practice, but rather a sign of the times.

Purpose

One might ask, "What is the purpose of all this?" There are multiple objectives:

- We would like to provide congregations facing the "60/50 challenge" (or *any* congregation that believes it is facing aging challenges) with resources, both spiritual and practical, to help them think through their options. This includes sharing what other congregations facing the aging challenge have done.
- We would like to work with WELS Board for Home Missions in thinking through ways that aging congregations might work together to continue gospel efforts in a way that serves WELS members and also reaches out to the community. For example, say there are four aging congregations all located within 15 miles of one another, and say that some of them are located in highly rural areas where there isn't much of a population density. Might it be possible for some/all of those congregations to merge in an area close enough to serve current WELS members, and yet that also has a population density that makes mission work more viable?

Again, there are many practical considerations. For example, how does a rural congregation with a cemetery merge with another congregation? What about the emotions involved in leaving behind a church building where one's parents and grandparents attended? These are practical questions, but they have a spiritual element. How do we put love for Christ and his Kingdom ahead of personal interests in these situations?

- We want to work with other divisions within WELS to strategize how to reach out to what is a growing American mission field, the Millennials. On the one hand, studies show that more than any other generation, they are reluctant to formally "join" a congregation. On the other hand, studies have also shown that Millennials are more open minded to "spirituality" and the concept of miracles. Moreover, studies suggest that church bodies are making inroads into the Millennial generation are ones that would be comparable to WELS in practice (though certainly not doctrine). Therefore, over this past year, the CCC began studying not only Millennial mindset, but also some "best practices" among WELS congregations whose efforts into this demographic seem to be bearing fruit.
- This data has implications for synodical planning. Some of the congregations facing the 60/50 challenge are located in areas where there is a very low population density. That means there is not much of a mission field. Such congregations may not be able to stay open for long.

What next?

- CCC director, Jonathan Hein, will meet with the Conference of Presidents in September to discuss this study further.
- CCC members will discuss demographic trends with other Lutheran church bodies.
- The demographic study will be conducted again this year. Originally it was reported we would ask for demographic information only once every five years. That still *is* the plan. But our hope is that this year we can get a compliance rate with the demographic report that is close to what it is for the statistical report. That would add about 300 congregations into Grouping A, which is obviously the most reliable source of data.
- Resources for congregations that feel they are facing an aging challenge have begun to be produced. They will be completed, God-willing, by Spring 2017.
- Resources for congregations that want to increase ministry efforts among Millennials have begun to be produced. They will be completed, God-willing, by Spring 2017.
- A final demographic report, based on the updated data gathered with the 2016 statistical report, as well as the resources, will be made available to the synod in convention, summer 2017.

Jeremiah 29:11

"For I know the plans I have for you," declares the LORD, "plans to prosper you and not to harm you, plans to give you hope and a future."

We do not know exactly what God's plans for our church body are. We do know that God's love for us has been proven beyond all doubt at the cross. We have seen his grace to us in the way he's provided for our church body for over a century in a half. We trust that whatever God has planned for us in the future, it is rooted in that eternal love. It is in his love and his plans, *not* ours, that we rest secure.

We gather data and make plans simply so that we might give him our best ministry efforts, our way of thanking him for his grace.

Respectfully submitted,

Jonathan Hein

CCC members

Rev. Norman Burger
Prof. Richard Gurgel
Rev. Jonathan Hein, director
Rev. James Huebner, advisory
Rev. Adam Mueller
Prof. David Scharf, chairman
Rev. Douglas Tomhave



ⁱ Data from www.pewforum.org and www.barna.org.

ⁱⁱ Data from ncronline.org.

ⁱⁱⁱ Conducted June 4 through September 30, 2014.

MDHH is here for YOU

WELS Mission for the Deaf and Hard of Hearing (MDHH) has a variety of resources available to encourage and assist pastors, teachers, congregations, interpreters, families and members in their outreach to people with a hearing loss.

Available on the MDHH Resource Center (csm.welsrc.net/mdhh):

- "Assistive Listening Devices" flyer includes information on hearing loops and FM systems.
- VRI (Video Remote Interpreting) information.
- Directories of congregations with hearing loops, signed services.
- "Difficult Liturgy Phrases" flyer suggests sign solutions for interpreters in church.
- "Deaf and Hard of Hearing Sunday" suggestions.
- *Open to All* video at wels.net/deaf gives tips in serving the deaf and hard of hearing in the congregation.

Available upon request:

- *By Grace Alone*, adapted, is the adult instruction manual for use with deaf adults. Introduction in MDHH Resource Center, manual free on request.
- "Bible Reasons Why Deaf People are Excused from Church" is a humorous blank booklet to encourage including deaf people in worship.
- *Jesus Loves the Little Children* Coloring Book shows how to sign the the popular story.
- Lord's Prayer Poster illustrates the Lord's Prayer in sign language.
- *I Can't Hear You* booklet offers communication tips for anyone who has contact with deaf and hard of hearing individuals.
- Manual alphabet bookmarks.
- MDHH brochure describes our mission/goals.
- "Understanding Hearing Loops" brochure shows how hearing loops work and answers questions.
- Offering envelopes encourage members in congregations to support MDHH's work.



Available for purchase from Special Ministries:

- *Easy Bible Lessons* CD with 36 lessons/Bible stories written at two levels of reading and understanding, has stories, color pictures, teacher's guide, and crafts. \$10
- *Signed Bible Stories* DVDs (4) feature the same 36 Bible stories in Pidgin Signed English. \$10
- *Christian Worship: Signing the Lutheran Liturgy* DVDs (2) show the liturgies of *Christian Worship* in sign language. \$10.

Other resources:

- *Sign to the Lord a New Song*, the largest religious sign language dictionary, has almost 800 entries. Available at NPH.net.
- Signed songs and prayers on Youtube.com/welsdhh.
- Speakers/bulletin board display available. Contact MDHH@wels.net.

WELS Mission for the Deaf and Hard of Hearing

N16W23377 Stone Ridge Drive

Waukesha, WI 53188-1108

414-256-3241

specialministries@wels.net

Highlights | June 2016



*Placing memorial stones
by the River Jordan.
(Joshua 4:4-9)*

Our calling

WELS Foundation exists to help God's people support gospel ministry through WELS. It provides planned giving services and administrative support for gifts benefiting WELS congregations and ministries.

Established in 1965, WELS Foundation, Inc. is one of seven Support Services entities of WELS. As a WELS subsidiary corporation, WELS Foundation serves God's kingdom by providing gift administration for complex gifts that ultimately benefit WELS congregations and ministries. WELS Foundation does not

receive financial support from the synod's operating budget but instead relies primarily on unrestricted gifts and administrative fees to cover its operating costs.

WELS Foundation is the foundation of choice for members, entities, and affiliates of WELS. It is the only foundation whose purpose is to facilitate donor's desires to support WELS ministries. During the calendar year 2015, WELS Foundation had the privilege to administer and distribute \$7.1 million in donor directed gifts.

Our current situation

WELS Foundation provides various giving opportunities including charitable gift annuities, charitable remainder trusts, donor advised funds, and endowment funds. It currently administers more than 900 charitable gifts on behalf of WELS members.

As of December 31, 2015 the total assets were \$100.6 million with net assets of \$48.0 million. The net assets held by WELS Foundation are managed for the benefit of the WELS ministries as designated by the donor. These ministries include WELS synodical ministries (i.e. Missions, Ministerial Education Schools—WLS, MLC, LPS, MLS), congregations, and numerous affiliated ministries such as area Lutheran high schools.

Charitable gift annuities

A charitable gift annuity is a contract between a WELS member and WELS Foundation, by which the member makes a gift of cash or securities in exchange for fixed quarterly annuity payments for life. After the Lord calls them home, the remainder of the gift annuity will be distributed to the congregation or ministry as designated. Income payments from a charitable gift annuity

may begin immediately, may be deferred until a specific date in the future, or may be deferred until an unspecified date in the future.

As of December 31, 2015 WELS Foundation administered 658 charitable gift annuities with a total market value of \$9.7 million.

Charitable remainder trusts

A charitable remainder trust is created when a donor transfers cash, securities, or real estate into a charitable trust, but keeps a specified income interest—usually for life. When the trust ends per the donor's designation, the assets in the trust pass to the designated beneficiaries such as the church and/or synod.

As of December 31, 2015 WELS Foundation serves as trustee for 160 charitable remainder trusts with a combined market value of \$29.5 million.

Donor advised funds

A donor advised fund is a charitable giving vehicle wherein an individual, family, or corporation makes an irrevocable, tax-deductible contribution of cash, securities, or other property to WELS Foundation and at any time thereafter can recommend grant distributions to qualified WELS ministries. The fund can be established with current gifts, deferred gifts (i.e. charitable gift annuities, charitable remainder trusts), and testamentary gifts (i.e. wills, living trusts, beneficiary designations of life insurance policies, or retirement accounts).

The WELS Foundation donor advised fund program provides an alternative to a private family foundation. WELS members can accomplish many of the same goals, but with far less administrative work and expense.

As of December 31, 2015 WELS Foundation administered 48 donor advised funds with a total market value of \$2.2 million.

Endowment funds

Endowment funds are permanently restricted funds established to receive and administer all gifts that are designated by the donor(s) for an endowment from sources such as cash, stocks, bonds, mutual funds, bequests, life insurance, charitable gift annuities, insurance policies, trusts, real estate, personal property, or any other gift, whether current or deferred.

Lord willing, expenditures from endowments further the work of the church by providing ongoing financial support for ministry until the Lord returns.

Donor designated endowments can be established through the WELS Foundation for the benefit of WELS congregations, area Lutheran high schools or other WELS affiliated ministries. WELS Foundation also administers synodical endowment funds for WELS Home and World Missions, Wisconsin Lutheran Seminary, Martin Luther College, Luther Preparatory School, and Michigan Lutheran Seminary.

As of December 31, 2015 WELS Foundation administered 59 endowment funds with a total market value of \$40.0 million.



Other gift administration services

The WELS Foundation also provides gift administration for letters of instruction, gifts of securities, IRA charitable rollovers, real estate gifts, life insurance contracts, agricultural crops, and other donor designated gifts.

Educational webinars

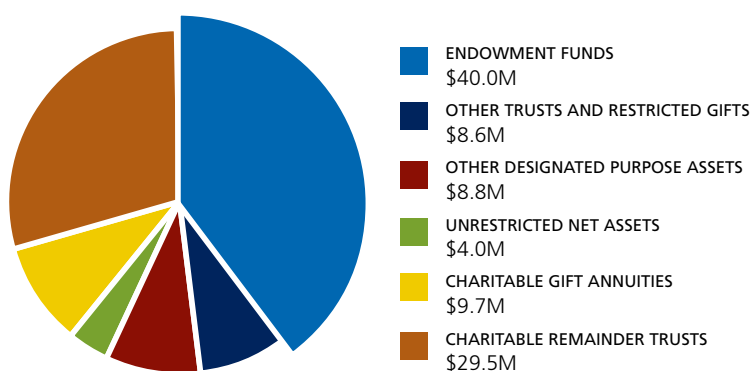
In 2015, WELS Foundation hosted a series of 12 educational Webinars. The monthly Webinars were timely presentations on various planned giving topics and made available by WELS Foundation at no cost to WELS Christian giving counselors, advancement officers, and congregational planned giving committee leaders. Contact WELS Foundation for recordings of past Webinars or to participate in future session.

A look ahead

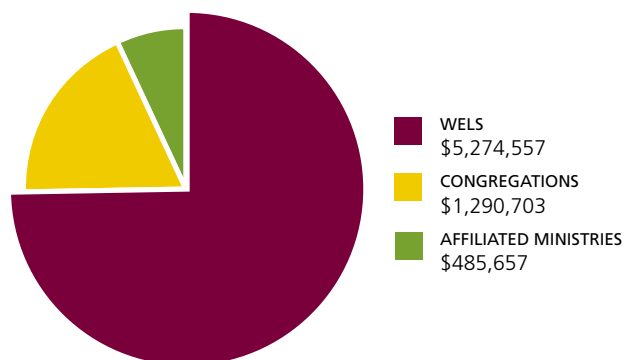
To carry out its mission WELS Foundation will continue to identify the most cost effective means to:

- Provide knowledgeable planned giving support to members through WELS Christian Giving Counselors and other WELS advancement representatives.
- Provide various planned giving opportunities including charitable gift annuities, charitable remainder trusts, donor advised funds, and endowment administration.
- Provide printed and online educational material regarding various planned giving opportunities benefiting WELS ministries.

TOTAL ASSETS OF \$100.6M
AS OF DECEMBER 31, 2015



DISTRIBUTIONS TO MINISTRIES OF \$7.1M
JANUARY 1, 2015 - DECEMBER 31, 2015



WELS Foundation
Wisconsin Evangelical Lutheran Synod

In Memoriam: Director Donald F. Schuppe fell asleep in Jesus on February 12, 2016. We are grateful for his nearly 12 years of faithful service as a member of the WELS Foundation board of directors.

Board of Directors: Mr. James Brenn, *chairman* · Mr. Donald Schuppe, *vice chairman*
Mr. Mark Schulz, *secretary* · Mr. Paul Beitlich · Mr. Nathan Birkholz · Mr. Tim Boerneke
Mr. Kurt Sames · Rev. Kurt Lueneburg · Rev. Paul Prange

WELS Foundation, Inc. · N16W23377 Stone Ridge Drive, Waukesha, WI 53188-1108
wels.net/foundation · 1-800-752-8940



WELS Investment Funds
Wisconsin Evangelical Lutheran Synod

Highlights | June 2016

"In his heart a man plans his course,
but the LORD determines his steps"
(Proverbs 16:9).

Our calling

The mission of WELS Investment Funds is to strengthen and enhance the ministries of WELS and WELS affiliated organizations by providing cost effective, professionally managed investment portfolios.

WIF serves as the administrator of two investment portfolios; WELS Equity Fund and WELS Income Fund.

The WELS Equity Fund seeks long-term capital growth by investing in a portfolio of equity securities that is well diversified geographically, by industry and company size. The WELS Equity Fund may be appropriate for participating organizations having a long investment horizon

and are prepared to accept volatility associated with equity securities.

The WELS Income Fund seeks to provide income by investing primarily in investment quality debt securities.

The WELS Balanced Allocation is not a WELS Fund, but allows participating organizations to have their accounts automatically allocated, at the beginning of each calendar quarter between the WELS Equity Fund (60%) and the WELS Income Fund (40%). As of June 30, 2015, approximately 90% of the total assets of the WELS Funds were allocated pursuant to the WELS Balanced Allocation.

Our current situation

As of December 31, 2015, more than 200 WELS organizations invest in the WELS Funds. WIF welcomed 8 new participants in fiscal year 2016.

WELS ministries invested \$12.9 million in WIF in the first six months of fiscal year 2016. \$938,524 came from congregations, \$771,869 million came from synodical schools, \$1.2 million came from WELS Foundation, Inc., and \$10.0 million came from WELS Church Extension Fund, Inc.

Throughout the year, participants withdrew \$6.7 million for their ministries.

As of December 31, 2015, WIF's assets under management totaled \$171.3 million—\$102.3 million for WELS Equity Fund and \$69.0 million for WELS Income Fund. Other than the WELS Foundation, collectively, more than \$98.9 million has been invested by congregations and affiliates. The largest investor is WELS Foundation, Inc. The foundation's \$72.4 million in charitable remainder trusts, charitable gift annuities, endowments, and donor advised funds represents approximately 45 percent of the total investment in the WELS Funds.



As of December 31, 2015, more than 200 WELS organizations invest in the WELS Funds, and WIF's assets under management totaled \$171.3 million—\$102.3 million for WELS Equity Fund and \$69.0 million for WELS Income Fund.

A look ahead

WELS Investment Funds focuses on three primary factors when managing investment portfolios; 1) controlling market risks through asset allocation; 2) selection of quality investment managers; and 3) controlling direct and indirect costs. To assist the board in these matters, WELS Investment funds has retained Vanguard Institutional Advisory Services to manage the investment portfolios for WELS and WELS affiliated ministries effective July 1, 2016.

What is the impact for ministries invested with WELS Investment Funds?

The change will result in a significant reduction in both direct and indirect expenses. The new operating model is anticipated to save hundreds of thousands

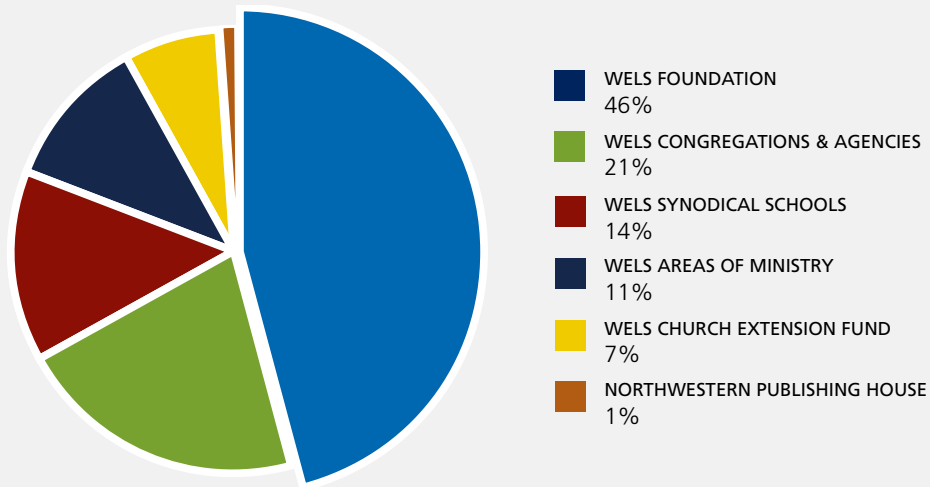
of dollars annually. Ministries will continue to have access to a fixed-income portfolio, an equity portfolio, and a balanced portfolio, but starting July 1 investments and redemptions will only be processed at the end of each month.

In addition, the board, as a cost saving measure combined the executive director position with WELS Foundation. This resulted in the elimination of one position. We heartily thank Mark Arnold for his faithful service over the past eight years.

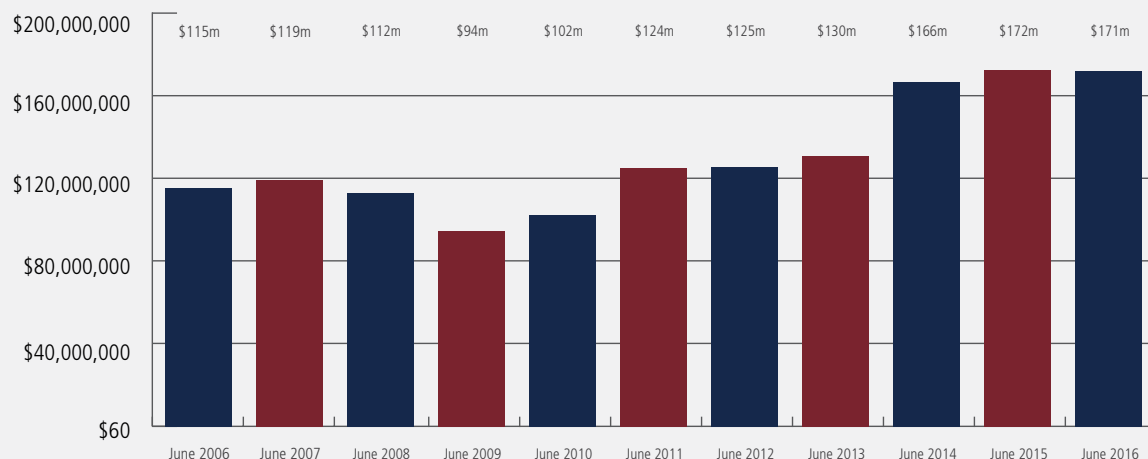
We look forward to continuing to serve your ministry.

Respectfully submitted,
James A. Holm, *WELS Investment Funds Inc.*

PARTICIPANTS AS A PERCENTAGE IN THE WELS FUNDS



ASSETS UNDER MANAGEMENT*



*Assets reflect June 30th Fiscal Year end totals. Fiscal Year 2016 are assets through December 2015.

AVERAGE ANNUAL TOTAL RETURN for the period ending December 31, 2015

	1 Year	3 Years	5 Years	10 Years
WELS Balanced Allocation*	-2.1 %	6.2 %	6.2 %	5.2 %
WELS Equity Fund	-3.2 %	9.5 %	7.7 %	5.3 %
WELS Income Fund	-0.8 %	1.1 %	3.5 %	4.5 %

Past performance is no guarantee of future results. Investment return and principal value will fluctuate so that fund units, when redeemed, may be worth more or less than their original cost. Current performance may be lower or higher than the above performance data.

*Hypothetical returns that would have been received on an investment of 60% in the WELS Equity Fund and 40% in the WELS Income Fund for the period indicated.

Our members

"The Minnesota Valley Lutheran High School Foundation has been blessed to be associated with WELS Investment Funds for 14 years. The investment philosophy employed by WELS Investment Funds align with our high school's objective of providing student tuition grants now and in the future. The staff at WELS Investment Funds is very friendly, knowledgeable, and helpful."

JOHN MIELKE, treasurer, Minnesota Valley Lutheran High School Foundation

"The Lord has richly blessed our congregation's efforts to encourage the work the ministry through our WELS Investment Funds. Since we've placed our scholarships in our WELS Investment Funds, we've been able to give very generous grants to students attending Lutheran schools to prepare for the ministry."

REV. PAUL SCHARRER, St. Paul's, Fort Atkinson, Wisconsin

"Winnebago Lutheran Academy has had an extremely positive experience in our four years working with WELS Investments. We're blessed to be able to take an annual disbursement in July. Forty percent of the disbursement is used for student aid, 40 percent to reduce debt from past building projects, 10 percent for ministry support, and 10 percent for capital expenditure items. The folks at WELS Investment Funds have been receptive to questions and available to meet with committees and boards when needed."

ERIC SCHRAUFNAGEL, business manager, Winnebago Lutheran Academy

Past performance is no guarantee of future results. The performance data is current as of June 30, 2015, and is subject to change at any time based on market and other conditions. Participating in a WELS Fund or the WELS Balanced Allocation is subject to investment risks, including possible loss of the principal amount invested. Withdrawals are payable by WELS Investment Funds exclusively from the net assets of the WELS Fund in which you participate. Accounts are not protected or insured by the FDIC or SIPC and are not guaranteed by WELS; WELS Foundation, Inc.; or any other person or entity. This is not an offer to sell or request to buy securities. The offering is made solely by the Offering Circular. At this time, the WELS Funds are NOT available to WELS-affiliated organizations located in Connecticut, Maryland, Mississippi, Pennsylvania, Tennessee, Vermont, or Virginia.



WELS Investment Funds
Wisconsin Evangelical Lutheran Synod

Board of Directors: Mr. Dennis Walters, *chairman* · Mr. Joel Luehmann, *vice-chairman* · Mr. James Abitz
Mr. Jon Bruss · Mr. Ronald Schmitz · Mr. Max Wenck · Dr. Ronald White

Advisory Members: Rev. Kurt Lueneburg · Mr. Todd Poppe · **Staff:** Mr. Jim Holm · Mrs. Monica Peavy

WELS Investment Funds, Inc. · N16W23377 Stone Ridge Drive · Waukesha, WI 53188-1108
wels.net/welsfunds · 1-877-888-8953

ShopWELS

shopwels.net

Subscribe now to ShopWELS Insider for the latest deals in WELS.
Be the best steward you can be.

WHAT IS SHOPWELS?

ShopWELS is a cooperative buying program that provides products and services for the faithful steward.

One of the blessings of walking together as a synod is that there are some things we can do better as a group than as individuals. Purchasing is one of those things—ShopWELS offers an opportunity to be good stewards of all God's resources.

Shop Now ➤

Subscribe to ShopWELS Insider to receive the latest news on inside buying in WELS at wels.net/subscribe.

Shop and donate at shopwels.net/shop-donate.

SHOP AND DONATE!

There are also a few ways to shop or search online and donate to WELS:

Shop online and donate to WELS at smile.amazon.com.

Shop or sell on eBay by going to charity.ebay.com and search "Wisconsin Evangelical Lutheran Synod."

Shop online and donate to WELS through Goodshop at goodshop.com.

Search online and donate to WELS at goodsearch.com.

Shop & Donate ➤



WELS 403(b)9 Shepherd Plan

- **WELS Denominational Plan**
- **Section 107 provisions for Ministers of the Gospel:**
 - Pre-tax contributions may be distributed for qualified housing expenses and may be excluded from gross income as a parsonage allowance in retirement.*
- **Ministers of the Gospel Housing Equity Account**
 - Distributions available prior to age 59½ for home down payment
- **Direct Rollover and Transfer Capabilities from current 403(b), TSA, IRA**
- **Current employer/employee contribution limits: up to \$53,000/year**
- **Pre-tax and ROTH capabilities**
- **Convenient online enrollment & easy-to-use website for 24/7 account access. Electronic prospectuses available online.**
- **Customer service team to assist with enrollment & answer questions**
- **Advisor service team for personal financial and/or retirement planning**
- **Pre-built investment fund portfolios or build your own portfolio**
- **No-load, low cost Vanguard & Dimensional Funds**
- **Loans or hardship withdrawals available**
- **Capability of separate portfolios for each money source – and ability to distribute from any fund or money source**
- **In-plan Roth conversion capabilities**
- **NO COST to your church / entity to implement**



For more information, please contact:

1-800-516-HAHN (4246)

WELS403b@HahnFinancialGroup.com

- Distributions from 403(b)9 denominational retirement plans are usually taxed as ordinary income. One exception may be distributions by Ministers of the Gospel for qualified housing expenses. Withdrawals made before age 59½ may be subject to a 10% federal income tax penalty. Generally, once you reach age 70½, you must begin taking annual Required Minimum Distributions (RMD), unless still employed by an entity participating in the denominational plan.

- Investing involves risk, including the potential loss of principal.

- Neither Hahn Financial Group, Inc. nor its representatives provide tax or legal advice. For answers to your specific questions, please consult a qualified attorney or tax advisor.

- Hahn Financial Group, Inc. is an SEC Registered Investment Advisor.

* Rev. Rul. 63-156, 1963-2 C.B. 79

2016 WELS Historical Institute Bus Tour of Historic Lutheran Churches

Friday, August 5, 2016

Including tours of Grace, Downtown, St. John's, N. 8th St. and W. Vliet St.,
Trinity, N. 9th St. and W. Highland Ave., Trinity, Freistadt, and Salem Landmark

9:00 AM–4:30 PM

Hosted by the WELS Historical Institute and led by Dr. Mark Braun

Cost: \$50.00 (lunch included)

REGISTRATION FORM FOR THE WELS HISTORICAL INSTITUTE BUS TOUR

Name (s)_____

Mailing address_____

Mobile or home phone number_____

Please describe any special dietary requirements or mobility
restrictions_____

Bus tour is limited to the first fifty-five registered participants. Meet at, park,
and return to Salem Ev. Lutheran Church, 6840 N. 107th Street, Milwaukee.

Mail registration form and payment by August 1, 2016 to Dr. Joel Pless, c/o
Wisconsin Lutheran College, 8800 W. Bluemound Road, Milwaukee, WI
53226-4626. Questions or more information: joel.pless@wlc.edu

WISCONSIN LUTHERAN COLLEGE

PREPARING STUDENTS FOR LIVES OF CHRISTIAN LEADERSHIP

WLC.EDU

SUMMER 2016 CONVENTION REPORT

THE WLC PROMISE

Deliver

academic excellence
without undermining
God's Word.

Care

personally for
students in a
distinctive,
Christ-centered
environment.

Provide

a welcoming
campus in a vibrant
community **filled**
with opportunity.

Offer

exceptional value
at a competitive cost.

Prepare

our students for lives
of **Christian servant**
leadership.



Greetings from Wisconsin Lutheran College. We are pleased to join with our partners in ministry as we enjoy spiritual enrichment, encouragement, and fellowship at this convention. I thank our gracious Lord for your faithful service as together we share the Gospel with the next generation.

Today, college-age Christian students are challenged to compromise the values instilled in them through their families, churches, and schools. Many struggle with debt upon graduation - impacting job choices, careers, and marriage plans. Some are even asking, "Is college worthwhile?" Meanwhile, secular colleges and universities are systematically unraveling Biblical values that have been the bedrock of our country for generations.

Wisconsin Lutheran College seeks to address these concerns as we prepare the future Christian lay leaders of your congregations and our synod. We've developed the WLC Promise, comprised of five pillars, which addresses the needs of today's Christian college students.

Please pray for our ministry, and please share information about our WLC Promise with those in your congregations and schools. Christian higher education in America is greatly challenged. We want to continue building on the foundation you've laid within the youth of our synod and work together in preparing Christian servant leaders for our churches, workplaces, and communities.

God bless you and your service in His Kingdom.

Dr. Daniel W. Johnson
President, Wisconsin Lutheran College



FIVE PILLARS OF THE WLC PROMISE

DELIVER academic excellence without undermining God's Word. WLC students learn at a nationally ranked college committed to academic excellence in each of its 38 majors. Students can work alongside professors doing heart disease research, travel to Zambia for a nursing clinical, take a literature course in England, or conduct marine biology research in Grenada. All of WLC's full-time faculty are members of WELS congregations and more than 75% have earned a Ph.D. or other terminal degree. *Business Insider* included WLC on its 2015 list of America's Smartest Colleges.

CARE personally for students in a distinctive, Christ-centered environment. From the residence halls to the classrooms, WLC students are mentored by caring, Christian faculty and staff. The college offers numerous opportunities to study God's word each week, in addition to volunteer programs in which students can share their faith and serve others. Students use their God-given gifts to compete in NCAA Division III athletics; perform in band, choir, and theatre; or take part in 45+ clubs and organizations.

PROVIDE a welcoming campus in a vibrant community filled with opportunity. Because of WLC's central location on the border of Milwaukee and suburban Wauwatosa, Wisconsin, students can take advantage of the area's beautiful lakefront,

cultural offerings, and internships at Fortune 500 companies. The warm and friendly campus offers modern residence halls and state-of-the-art facilities. WLC is situated across the street from the Milwaukee Regional Medical Center, an invaluable asset for students who are interested in healthcare and the sciences.

OFFER exceptional value at a competitive cost. WLC students received more than \$12 million in scholarships this year and will graduate with the second-lowest debt load among private colleges in Wisconsin. A four-year graduation guarantee and merit awards worth up to \$60,000 further assist students in their quest for a Christian college education at WLC. According to *College Factual*, WLC ranks 47th in the nation among colleges that deliver a great education compared to their cost.

PREPARE our students for lives of Christian servant leadership. Our communities, workplaces, families, and churches desperately need moral, ethical, Christian leaders. Preparing students to be these leaders in the world is a key component of WLC's mission; it's why the college exists. It's also what distinguishes WLC from other institutions of higher learning. Students have many opportunities to serve abroad, in the local community, and on campus. The new Certificate for Christian Leadership further intentionalizes the college's mission.



average
class
size

16



3.43

average high school GPA

student-faculty
ratio

12:1



15+

weekly
worship
opportunities



Noah Schriefer '17 - California Lutheran High School
Brock Vredevelde '18 - Lakeside Lutheran High School
Amanda Pearson '16 - Luther Preparatory School
Bethany Unkefer '16 - Arizona Lutheran Academy

STUDENT POPULATION
1,188 total enrollment



68%
resident students

45% | 55%
male | female



31 | 8
states | foreign countries



Celebrating 115 years

Sharing **hope**

with those who need it most!



Our Story



Real Life Challenges



Ricky's Story



Women's Ministry

Videos on the Web

Family Albums

Family albums – what a priceless treasure. They contain baby and toddler pictures, pictures from the first day of school, report cards, graduation announcements and newspaper clippings of weddings, births, even deaths. From cradle to grave, the family album tells the stories of those we love.

God's family album is much the same, and while it doesn't contain a single picture, it is filled with stories about the world that he loves. Consider this one short verse from the Father's family album: "See what great love the Father has lavished on us, that we should be called children of God! And that is what we are! The reason the world does not know us is that it did not know him" (1Jn 3:1).

It's amazing when you think about it – God calling us "his children" – seeing how "every inclination of our heart is evil from childhood" (Gn 8:21). God has reason to call us sinners, rebels and God haters, but he has no reason to call us his children. Yet God lavishes his "great love" upon us by sending Jesus to reconcile the entire world to himself through his sacrifice on the cross. All this God does, just so that we might be called "children of God"!

In contrast to this wonderful news, is the sad reality that our world remains rather clueless when it comes to our Savior God. Oh sure, people may have heard of his name, maybe even know some of the stories about him, but the world doesn't "know him". The world doesn't see Jesus as the Savior from sin – someone who lived and died for them.

continued on back

InstitutionalMinistries.net



2323 N Mayfair Rd #480
Wauwatosa, WI 53226

414.259.4370



Ministry Insights



At a recovery support group recently, I heard a man say, "I can't quit drinking for anybody else's sake; I'm doing it for me. Not for my wife or my kids; I'm not even staying sober for God. I'm doing it for me." That might sound shocking, but I believe he's got it right: The God of grace tells us, "You don't need to do anything to get my attention or to get on my good side; I already love you and accept you and forgive you. You don't have to do anything FOR me: let's talk about what you can do WITH me." Chaplain Merten "



There is a real possibility that in a short period of time, 3 men who spent much of their young life running the streets, getting into all sorts of trouble, may be working together to walk down a new path. Usually in addiction recovery, the recommendation is to get away from the people, places, and things of their past. But could this actually work? Brothers in addiction...brothers in recovery? Lord may it be so! Chaplain M. Wenzel



Tina sat silently when we first met and seemed hesitant to speak. After a time, she quietly said, "I was hoping you could read some Scripture to me." At this point in her life, Tina needed to hear her heavenly Father's words of forgiveness, hope and direction. We read Psalm 23 and Ephesians 6, and rested in our Father's arms for a moment. Tina agreed to let me come for weekly visits, and I prayed that as we walk these 90 days of her jail sentence together, God would use our time in His Word to bless her. I have no doubt that God will keep His promise to Tina — walking through the door of the heart He's been knocking upon. Deaconess Owens.



On the upper floor of a hospital a family of 8 got on the elevator with me. They had just said their last words to a dying loved one and their mood was somber as we prepared to go down to the main floor. But when one of the family members saw me, she said: "We are safe, the chaplain is with us." I looked at them and said: "But we are going down!" They all started laughing as they understood the implication. Their somber mood was broken with spiritual humor and they looked forward to someday going up with Jesus. Chaplain K. Wenzel



I attended the required annual orientation at my prison this week, but before we started going through all the DOC rules and regulations governing "volunteers", they brought in six inmates to speak to us. As the six took their turn, thanking all the volunteers that had gathered (mostly from religious organizations), for their services, I was struck once again by the sincere appreciation that these men have for our weekly visits. What a privilege it is to be a part of our LORD's ministry to these men — "I was in prison and you came to visit me" (Mt. 25:36). Chaplain Radsek

Family Albums *continued from front*

As a chaplain, I see this sad truth manifest itself in many ways in prison. A while back, the Buddhist group was meeting in the room next to ours. While they were busy chanting and ringing their bell in search of some inner peace, we were reading from the book of Acts. I had just read the words Jesus spoke to Saul on the road to Damascus: "I am sending you to them to open their eyes and turn them from darkness to light..." (26:17), when one of my guys (commenting on our chanting neighbors), says, "Listen. That's the sound of darkness." Everyone chuckled a bit before returning to our Bible study, but sadly, he was right.

My friends, there are institutions all around us, filled with countless souls destined for hell, when all their sins have already been paid, yet they do not receive this forgiveness, because they do not know the Father's love. For 115 years, Institutional Ministries has been helping these often forgotten souls, to know the Father's love, and as we mark this milestone in our ministry, we thank God for the privilege of being His partner in ministry, and for all the ministry partners he has blessed us with over the past 115 years. Join us in this vast mission field, and together, we will help them know the Father's love for many more years to come.



by Chaplain Joseph Radsek



WLCFS-Christian Family Solutions
W175 N11120 Stonewood Dr.
Germantown, WI 53022
888.685.9522 • info@wlcfs.org
www.ChristianFamilySolutions.org



HEALING & HELPING

MINISTRY UPDATE
SUMMER 2016

Our ministry is multi-faceted.

• counseling • home care • senior services

Our healing & helping ministries

Counseling

There are a lot of hurting people in the world, and untreated mental health concerns can affect entire families. We want to be the Christian counseling resource people turn to for hope, healing, and peace.

Counseling Clinics—Counseling services for all ages are available in our Midwest community clinics and for students in our grade school, high school, and college clinics.

Member Assistance Program—A customized way for churches, schools, and organizations to provide counseling services for their members (in person in our clinics or via secure video from anywhere).

Telehealth Program—Counseling via secure video in states where we have licensed counselors.

Home Care

Sometimes in life a little extra help is needed. Our compassionate and experienced caregivers provide individuals with personal care and assistance in their homes to help make their lives easier, while maintaining the highest level of independence.

Senior Services

Since 1965, WLCFS has provided care for seniors. We are blessed to have two senior living communities.

The Gardens of Hartford—assisted living in Hartford, WI

Wisconsin Lutheran Living Center—assisted living in Milwaukee, WI

Please see our website for a full list of our clinics and services.

2015 “Year in Review”



With donor support, our “Year in Review” shows how we helped more people than ever in 2015. Please see the information below for a quick overview of the impact that donations have made in the lives of several thousand children, teens, and adults.

Teen Counseling in 2015

1,012 counseling hours given to teens at critical times

22 Lutheran High Schools & Prep Schools served

For more information about our Teens 4 Teens initiative that supports teen counseling, please see our website.

5 to 400

of Member Assistance Program organizations



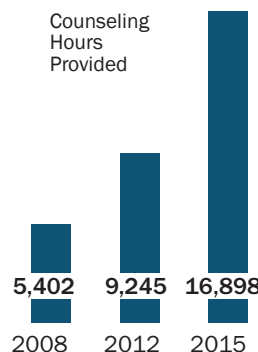
The Member Assistance Program (MAP) provides counseling services to 400 congregations, schools, and other organizations. **With donor support, we hope to assist 500 organizations in 2016.**

16,898

of Christian counseling hours provided in 2015

Through generous gifts from donors, we have seen immense growth over the past eight years.

In 2015, over 2,800 people were assisted with Christian counseling!



19,910

of Home Care hours provided in 2015



www.ChristianFamilySolutions.org

Please see the back for updates about our services.

Expanded clinics & counseling services

As more and more people struggle with difficult life issues and mental health concerns, Christian Family Solutions is committed to broadening our services to meet their needs. We are currently **updating and expanding several of our counseling clinic locations** in order to serve more people with higher levels of care. Our Fond du Lac (WI), Appleton (WI), Brookfield (WI), and Mankato (MN) clinics are moving into larger, updated locations. At each of those clinics, we will be offering day treatment programs, which will serve those who need more intensive counseling care. Plans are in the works to gradually expand and update more of our clinic locations.

Our **counseling via secure video (telehealth) is expanding as well**, as we continue to hire counselors throughout the United States. We now offer counseling services via telehealth to those who live in the states where we have licensed counselors—currently Wisconsin, Minnesota, Florida, Indiana, Michigan, North Dakota, and Idaho, with the goal of continuing to add more counselors in more states. Some insurance companies are now reimbursing for telehealth services.

Short-term counseling services are also available anywhere in the country and even internationally through our **Member Assistance Program (MAP)**. Congregations, schools, and other organizations continue to provide access for their members to our Christian counselors, who can assist individuals, couples, and families.

Along with emotional/behavioral counseling, more organizations are requesting and receiving discounted MAP rates for educational presentations, premarital counseling, and career counseling services as well. All of the services are available in person at a clinic location or through a live, secure video connection.

To learn more about our clinic locations, telehealth services, and our Member Assistance Program, visit our website at www.ChristianFamilySolutions.org.

We welcome CEO Mark Klug

We are so excited to welcome Mark Klug to our Christian Family Solutions team! Mark comes to our agency with an extensive background in behavioral health management.

As a son of a WELS pastor, Mark was strongly influenced by his Christian upbringing and education, which instilled in him a deep understanding of the commitment our Synod has in fostering strong Christian family values. Those Christian principles are also the foundation of our work at Christian Family Solutions.

Drawing on his behavioral health background and years of experience, Mark is committed to developing programs that provide higher levels of care for those in need of more intensive counseling services. He is also deeply committed to our ministry of helping people not only physically and mentally, but spiritually as well.

To view a short video that introduces Mark Klug and highlights our future direction, please visit our website.



WELCOME, NEW MAP ORGANIZATIONS

Divine Peace Lutheran Church, Renton, WA
Saint Timothy Lutheran Church (ELS), Lombard, IL
Shepherd of the Hills Lutheran Church, Tucson, AZ
Peace Lutheran Church, Aiken, SC
Good Shepherd Lutheran Church, West Bend, WI
Shepherd of the Lakes Lutheran Church, Fairmont, MN
Christ Lutheran Church, Marshall, MN
Emanuel Lutheran Church, Tawas City, MI
St. Mark Lutheran Church, Salina, KS
St. John Lutheran Church, Milwaukee, WI
St. Martini Lutheran Church (LCMS), Milwaukee, WI

The Member Assistance Program is a customized way for churches, schools, and organizations to provide counseling services for their members (in person in our clinics or via video from anywhere).

To learn more, visit ChristianFamilySolutions.org or call 800.438.1772.

www.ChristianFamilySolutions.org • 888.685.9522 • info@wlcfs.org



Visit the home page of our website to sign up for our monthly e-blog!



THE POINT OF GRACE

Milwaukee Area Campus Ministry

“Christ On Campus”

Currently serving Marquette (MU), the Milwaukee School of Engineering (MSOE), the University of Wisconsin – Milwaukee (UWM) and Wisconsin Lutheran College (WLC)

UWM: We finally have our Campus House fully back for our own use. It's great to once again have a place we call home. This past school year the Campus House was open Mon.-Thurs. from 11am to 4pm. On Wed. evenings Bible class began at 7:30 (aver. of 5-6 students) followed by chapel at 8:30 (aver. of 7-8 students) concluding with fellowship and snacks. The fellowship following chapel is a great blessing that helps bond our students and staff. For the first time in recent years, the students are also doing service projects: UWM students helped feed students at Lighthouse Youth Ministries, and MSOE students had the opportunity to take a Travel/Canvass/Witness trip to Tennessee.

Senior Vicar Program: Senior seminarian and pastor elect Bryant Laude and family lived upstairs in our Campus House. Bryant was a very blessed asset to our ministry at UWM. This coming school year, seminarian Philip Janisch will serve as our senior vicar. The vicar is responsible for UWM Bible classes and chapel services. We pray that the vicar program will continue to help improve our ministry at UWM. The WELS Campus Ministry Committee (CMC) has informed us that they will help fund the Vicar program by hiring the vicar to work for the CMC, enabling the Vicar to stay rent free while he serves both TPOG and the CMC.

MSOE: Pastor Aaron Strong, the evangelism pastor at Grace, downtown Milwaukee, is eagerly getting involved with the students and ministry at MSOE. We feel gratified that Grace and TPOG are working together to serve the students of MSOE. This is an answer to our prayer as we seek local congregations to “adopt” a campus. As our first effort, we are pleased with the results and the spirit of cooperation that exists.

WLC: For the first time this April, TPOG led a Bible Classes on WLC's campus. This is a nice addition to the **Gatherings** also held at WLC. We appreciate the spirit of cooperation we have received from WLC's Ministry Department.

Marquette: Although we held Bible classes and two **Gatherings** at Marquette this past school year, our attendance was low. We look forward to a renewed emphasis on student contact at MU as we move forward into next year.

The Gatherings: The **Gatherings** continue to be a blessing as students from all the campuses we serve (MU, MSOE, UWM and WLC) gather together for study and encouragement. Most of these presentations are available for viewing online at www.tpog.net so that other campus ministries and youth groups might benefit from these speakers. These are the topics and speakers from this past year:

- September 23 at UWM: Pastor Mark Braun spoke on “The Reliability of Scripture.”
- October 7 at Marquette: Speaker Rachel Greiner's topic was “Wanted: Dead or Alive.” Honest, productive conversations about abortion are possible in making the case for life!

- November 3 at WLC: Brian Anderson (TV announcer for the Brewers) shared his story on “Being a Christian in His Professional Work World.”
- December 11 at MSOE: The MSOE chapter hosted a Christmas Party at The Grace Center which included a **Gathering**. Pastor Michael Novotny shared with us the important truth that “Porn Kills.”
- February 2 at MSOE: Scott Barefoot shared with us his story of “Leaving the Gay Lifestyle for God’s Grace.”
- February 16 at WLC: Guest speaker Henry Tyson encouraged everyone with his topic: “Following a Radical Call in Christ and Education.”
- March 22 at UWM: Rachel Greiner spoke on pro-life issues under the heading “Equality for All”
- April 12, at Marquette’s Alumni Memorial Union: Pastor Aaron Strong gave us tips on sharing God’s Word with his stories from his ministry in Las Vegas entitled “Starting a Conversation about God – Stories from Sin City.”

Case Statement: We have created and published a case statement which we’re finding very helpful as a foundational guide to our own ministry, and as a handout to others to show them what we’re all about. It was worth the great amount of time and effort to develop it. Contact us at office@tpog.net to receive a copy.

Gifts and Grants: This past year we were blessed with a \$2500 grant from the Siebert Foundation to help fund the **Gatherings** as well as some other ministry items. We also received an \$18,000 gift from St. Marcus’ Gamm estate to fix up the very aging interior of our Campus House.

Annual Report: Copies of our 2014-2015 Annual Report are available. The 2015-2016 Annual Report will be available in July. For a copy, please contact us at office@tpog.net to receive a copy.

Looking Ahead: The Ministry here at The Point of Grace has changed dramatically in the four years that I’ve been serving. Yet God has blessed us in many ways including a very committed and hard working core of paid staff and volunteers.

Please pray: We ask that you pray

- that God give us wisdom as we move forward into the future, especially in our “adopt a campus” vision
- that God bless our high school outreach efforts so that students are more aware of our campus ministry, and WELS campus ministry in general
- that God bless our chapters with leaders and students so that we can not only maintain our ministries on the campuses we serve, but see them grow and thrive
- that God bless a resurgence in our work at Marquette

Submitted by Pastor Don Thompson (414-303-3887 or pastordon@tpog.net)



Chicago Conference Reformation Rally

*Traveling the road to the 500th Anniversary of the
Lutheran Reformation in 2017*

When: **Sunday, October 30, 2016**

— **4:00 PM Worship Service**

— **5:30 PM Fellowship Meal**

Where: **Historic St. Andrew Lutheran Church located at 3658 S.
Honore St., Chicago, IL 60609**

Preacher: **Rev. Mark Jeske, Pastor of St. Marcus Lutheran Church in
Milwaukee, WI and the host of "Time of Grace" TV program**

For more information go to

www.chicagoreformationrally.com



