



Dear Friends in the Southeastern Wisconsin District,

I was talking to district brothers Mike Swenson and Bob Lehninger several weeks ago. We were comparing notes about my 2014 trip to Lutherland and their trip, scheduled this coming October. I thought I was making a joke when I said, "Wouldn't it be incredible to be in Wittenberg on October 31?" They smiled. "That's exactly where we'll be." I'm glad I won't have to battle the crowds in *Lutherstadt* that day, but I confess I'm a little jealous.

I suppose the rest of us will be at work on that Tuesday in October, doing what we normally do on Tuesdays. On the Sunday that follows, however, we'll travel to Wittenberg in a different way and with a different purpose. We won't see the Castle Church where Martin Luther posted his 95 Theses. We won't visit St. Mary's where he and Kate worshiped and had their children baptized and where he preached hundreds of sermons. We won't walk through the halls of the Black Cloister where he lived and worked. But we will remember Martin Luther on November 5, not as a critical figure in western civilization, but as a humble servant whom the Lord Jesus chose to rediscover and restore the treasure of the gospel.

November 5 – 3:30 p.m. – Miller High Life Theatre

That's the basic information. Since our district worshiped in this space the last time (when it was known as the Milwaukee Theater), the venue has been magnificently remodeled with seating for 4,100. Located at 500 West Kilbourn Avenue in downtown Milwaukee, the theater is accessible via I-43, I-41, and I-94 for all the members of our district. Publicity for this service will include directions to the theater and information about parking.

Festival Funding

As plans for this celebration unfolded, someone wondered if there would be interest in a Reformation event in our very busy district. We decided to find out by asking for an indication of financial support. If pledges translate into interest, the leaders of our district are very interested! 86 congregations have pledged more than \$39,000 to fund this event. This level of support will enable us not only to prepare the service, but also to offer transportation assistance to the adult and children's choirs.

You have received a request from Secretary Carter to send him the money part of your pledge by June 5. We encourage you to do so.

Participants

The spoken Word and the Word in music will form the festival service; don't expect an abbreviated order of worship! Pastor James Huebner, First Vice-president of WELS, and well-known in our district, will be the preacher. Pastors from each of the district conferences will be involved to read and pray. Two choirs are being formed: an adult choir directed by Mary Prange and a children's choir directed by Sarah Zietlow Henrich. The goal is 300 voices in each choir. We've rented a large Rodgers organ (the theater doesn't have an instrument), and Kevin Becker, organist at Grace, Milwaukee, will be at the keyboard. An ensemble of brass and percussion players will add beauty and power to our singing. We have not

invited the choirs from our district's four Lutheran high schools since those groups will be very busy preparing for the WELS Choral Festival which celebrates its 50th anniversary in La Crosse on November 10-12. We will encourage them to join their own congregation's adult choir for this service.

Rehearsal Day – November 4

To prepare the music for this festival service, we will send copies of the music to all participants early in September; some of the music will be able to be used in congregational Reformation services on October 29 or November 5. We've set Saturday, November 4, as REHEARSAL DAY. Working with local organizers, we will schedule rehearsals in each district conference at a centrally located site and at a time that works best for the local congregations and schools. **We ask parish schedule planners to keep that Saturday open especially for adults and children who may be involved in the rehearsal.**

Publicity and Education

We are working right now to assemble and update email contact lists of pastors, school principals, congregations, and choir directors so that all communication can be clear and thorough. This report will be sent to all congregations tomorrow, June 7. We will be setting up a Reformation Service Facebook page and Twitter account. In the weeks that follow this report, pastors and school principals will receive a schedule of planned publicity releases which will be able to be used in a variety of ways: for personal and professional growth, for adult and child education, and for information about the festival service and offering. This report is also available on the district web site.

It isn't too early to consider the value of arranging coach or bus transportation from your congregation to the theater.

Reformation Thankoffering

A significant aspect of our publicity effort will be to announce and encourage a **Reformation 500 Thankoffering**. The goal of this special offering is to enable our District Mission Board to enhance mission efforts in our own district with gifts above and beyond funds received from the WELS *Every Neighbor, Every Nation* mission initiative. The primary emphasis will be to give the gift at the service, but we will also suggest ways to participate in the offering even if attendance at the service is not possible.

Reformation Leaders

The congregation's spiritual leaders are the critical components in any parish endeavor, including this one. Whether you serve as a pastor, teacher, or lay leader, we encourage you to take the lead in this celebration. The goal is not simply to fill the theater or to offer a generous thankoffering. The objective is to encourage the people of God to remember and give thanks for the Savior's great gospel gift which he restored to the church through the Lutheran Reformation. The celebration of the Reformation, in this year or any year, is really nothing more than a review of theology, i.e., the biblical truths which flow from the Scriptures and save our souls. May the Spirit bless our work together.

In his service,

James P. Tiefel

Southeastern Wisconsin District Conference
 Wisconsin Evangelical Lutheran Synod

WELS Ministry of Christian Giving
 Rev. Kurt Lueneburg





Scriptural encouragement

"No weapon forged against you will prevail, and you will refute every tongue that accuses you. This is the heritage of the servants of the Lord, and this is their vindication from me," declares the LORD (Isaiah 54:17).

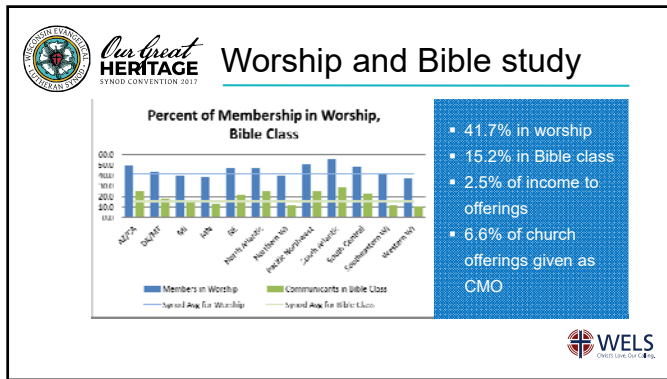


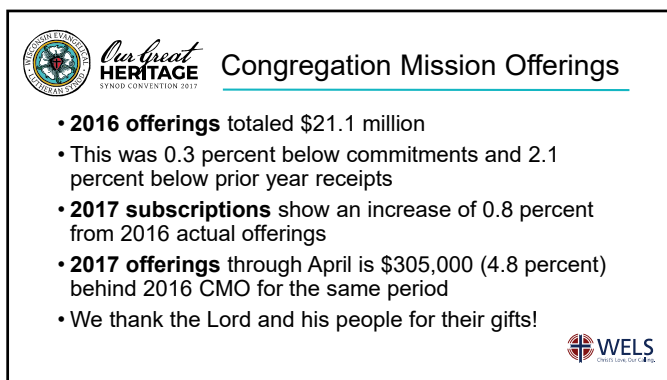


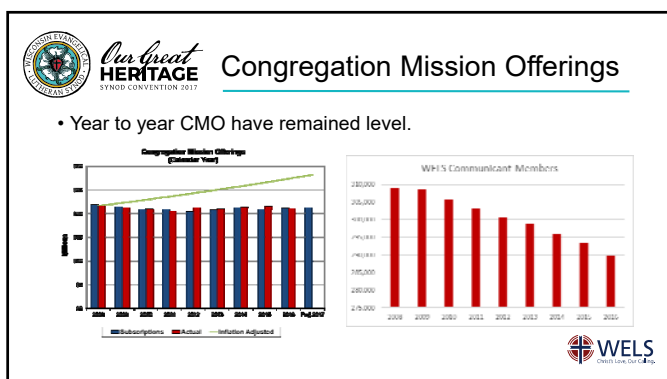
Scriptural encouragement

Your statutes are my heritage forever; they are the joy of my heart (Psalm 119:111).











Our Great
HERITAGE
SYNOD CONVENTION 2017

Congregation Mission Offerings

- CMO remains level while total church offerings increased.

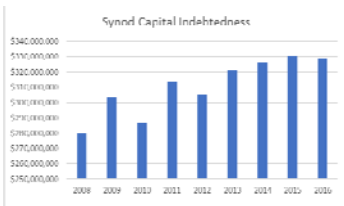




Our Great
HERITAGE
SYNOD CONVENTION 2017

Congregation Mission Offerings

- CMO remains level while capital indebtedness increased.





Our Great
HERITAGE
SYNOD CONVENTION 2017

Congregation Mission Offerings

- When setting CMO, aim for 10 percent of offerings. If at or above this goal, encourage your congregation to keep increasing.
- "Excel in this grace of giving....For you know the grace of our Lord Jesus Christ" (2 Corinthians 8:7,9)





Our Great
HERITAGE
SYNOD CONVENTION 2017

Congregation Mission Offerings

- WELS Connection
- Together e-newsletter
- Forward in Christ
- Annual Report
- Annual CMO setting materials





Our Great
HERITAGE
SYNOD CONVENTION 2017

"One in Christ" Debt Elimination

- Praise God - the effort to pay off our \$4.7 million debt was successful!
- From 7/1/15-1/1/17, 572 congregations and 2,273 individuals and other organizations gave \$3.1 million.
- \$1.6 in payments from FY16 budget





Our Great
HERITAGE
SYNOD CONVENTION 2017

Individual offerings

Featured Video




WELS Foundation
Wisconsin Evangelical Lutheran Synod



00:00 / 00:00 HD








Our Great HERITAGE
SYNOD CONVENTION 2017


Individual offerings

Your giving counselors:

- Rev. Kevin Hundley, Current Gifts**
 Phone: 262-237-2660
 E-mail: kevin.hundley@wels.net
- Mr. Rick Kneser, Deferred Gifts**
 Phone: 262-305-7688
 E-mail: rick.kneser@wels.net






Our Great HERITAGE
SYNOD CONVENTION 2017

Scriptural encouragement

Children are a heritage from the Lord, offspring a reward from him (Psalm 127:3).





Our Great HERITAGE
SYNOD CONVENTION 2017

Individual offerings

3 in 10
have a will






 **Our Great HERITAGE**
SYNOD CONVENTION 2017

Individual offerings

1 in 3
remember a
charity in their
estate plan




 WELS
CHURCH LINK OUR CALL

 **Our Great HERITAGE**
SYNOD CONVENTION 2017

Individual offerings

In fiscal year 2016–17 (through April), WELS Christian giving counselors (11.8 full-time equivalents) conducted 2,906 free, confidential visits with God's people that helped facilitate \$4 million in gifts received and \$40.9 million in gifts expected for WELS.

 WELS
CHURCH LINK OUR CALL

 **Our Great HERITAGE**
SYNOD CONVENTION 2017

Individual offerings

New opportunity: the qualified charitable distribution
Those 70.5 or older can make tax-free gifts to ministry from their IRAs.



Consider directing required minimum distributions to ministry to save on taxes, then use the cash you would have given to charity for other needs.

 WELS
CHURCH LINK OUR CALL



Our Great
HERITAGE
SYNOD CONVENTION 2017

Resources

An Encouraging Word

- Tips from those experienced in the area of stewardship
- News and updates on resources
- Prayers for synod ministry
- "Stewardship by the lectionary" devotionals based on weekly readings; share God's stewardship truths according to the pericope
- Cut and paste planned giving articles





Our Great
HERITAGE
SYNOD CONVENTION 2017

Resources

Stewardship program: *Joyful Generosity*

- Worship helps
- Bible study
- Personal devotions
- Shares the Bible's clear teachings on the management of our possessions





Our Great
HERITAGE
SYNOD CONVENTION 2017

Resources

Congregational planned giving program

- A guide for encouraging planned giving in your church using synod resources and the assistance of your local giving counselor
- Includes "quick starts" to promoting planned giving and setting up an endowment as well as more complex options





Our Great
HERITAGE
SYNOD CONVENTION 2017

Mission and Ministry Sunday

- WELS will provide worship, Bible study, and other resources to aid in traditional-style mission festivals.
- This is a chance to recommit ourselves toward the Great Commission locally and through the opportunities God gives us as a synod.
- Special offerings can go to a designation chosen by the congregation or to "WELS Mission and Ministry" to support our daily gospel work.





Our Great
HERITAGE
SYNOD CONVENTION 2017

Scriptural encouragement

For you, God, have heard my vows; you have given me the heritage of those who fear your name (Psalm 61:5).



Thank you!

WELS Ministry of Christian Giving
mcg@wels.net
800-827-5482



Our Great
HERITAGE
SYNOD CONVENTION 2017

WORLD MISSIONS

WELS MISSIONS OVERVIEW

To learn more about WELS Missions, subscribe to *Forward in Christ* magazine at wels.net/fic.



CAMEROON: The Cameroon mission field is working to develop financial programs to encourage independence for the Lutheran Church of Cameroon (LCC) as well as putting considerable effort towards the development of a sustainable worker training program, with hopes that the LCC will be able to continue the work with less support. A major piece of that puzzle is the acceptance of national pastor Israel of a call to teach at our worker training program.

MALAWI: The Malawi field has been focusing on strategic planning, working with the Lutheran Church of Central Africa (LCCA) to form a clearly defined program for LCCA ministry. In April 2016, the Malawi mission team met with representatives from the WELS Board for World Missions, the Administrative Committee for Africa, and all WELS missionaries in Africa to conduct a comprehensive evaluation of ministries and to plan future work.

NIGERIA: In Nigeria, All Saints Lutheran Church and Christ the King Lutheran Church Synods continue their faithful work and their fruitful fellowship with one another, with WELS, and with the Confessional Evangelical Lutheran Conference. Forty men are studying to qualify for pre-seminary enrollment. The Lord's work in Nigeria currently offers many opportunities that are a financial challenge for the Nigerian Lutheran Church, even though it has been blessed with unexpected gifts and donations.

ZAMBIA: Seminary programs are making good progress in training and standardizing methodology.

INDONESIA: Gereja Lutheran Indonesia (GLI) continues to proclaim the gospel in six major geographical regions of the country. Plans are being made to build a new multipurpose facility for worker training, publications, and administrative offices. The Asia Pacific Rim administrative committee of WELS and Kingdom Workers has partnered with GLI to plan and implement the building of the first GLI Lutheran Elementary school. Opportunities for outreach are numerous.

THAILAND: Mission starts in the Hill Tribe villages are meeting with success as national pastors reach out with the gospel. The church in Thailand is growing closer to realizing a constitution and organizational structure for a national church body.

PHILIPPINES: The native Philippine missionary serves a small flock of faithful believers in a suburb of Manila. They are using videos and printed materials from Multi-Language Publications (MLP) to reach out to the unchurched in their community and looking to begin ministering to prospects in outlying areas. A special focus is on early childhood ministry.

WELS MISSIONS

N16W23377 Stone Ridge Drive • Waukesha, WI 53188
414-256-3243 • wels.net/missions



WORLD MISSIONS

WELS MISSIONS OVERVIEW

If you would like to support Missions,
please visit wels.net/give.

EAST ASIA: In East Asia, five missionaries are training new believers and support 52 lay missionaries whose 300-plus students meet weekly around God's word in Bible classes. More than 50 students receive training through Christian Studies Institute classes, and over 150 students study online weekly with a WELS Chinese pastor based in the United States. Six churches have been started by local leaders, and five other groups are organizing into churches. In Hong Kong, new believers are being trained to serve in churches throughout East Asia. Asia Lutheran Seminary professors serve more than 80 students, 16 of which study full-time at the Asia Lutheran satellite seminary. Missionaries help strengthen fellowship ties with the Hong Kong-based church, Salem, and the church in Taiwan. WELS Multi-Language Publications provides Chinese Lutheran materials, which are being distributed through bookstores, e-book platforms, and online social networks.

ALBANIA: The national pastors continue to reach out with the gospel to give hope to needy souls in this poor Eastern European country. Plans are underway to celebrate the mission field's 20th anniversary in 2016. The new seminary student (the son of a national pastor) has completed the first level of studies and has begun the second. The Durres congregation has maxed out their storefront space with 80-90 in worship on a weekend.

INDIA: Despite a 20-month single vacancy and four-month double vacancy, the CELM seminary continues to train 42 men for the public ministry and continues to offer continuing education to our 45 graduates on a regular basis. The field has an active translation and publications program in addition to building one to two new chapels every year on a self-help basis. WELS Christian Aid and Relief annually funds humanitarian aid (well digging and medical supplies) to show Christian love. Seven children's homes care for the physical and spiritual needs of 205 children, and one elementary school offers instruction in God's word to 220 children—all outside the WELS budget.

NEPAL: In Nepal, only one half of one percent of the people are Christian. In spite of the small percentage of Christians, the mission in Nepal is being blessed by God in extraordinary ways. For the past seven years, more than 100 leaders of the church gather for seven to 10 days to attend workshops every spring and fall. In the morning, they study the Bible. In the afternoon, they practice teaching what they learned in the morning. Seventeen workshops have been conducted.

PAKISTAN: More than 47,000 people have been enrolled in the Bible correspondence and teaching school. In spite of the threat of persecution, the gospel is being shared boldly. 10,000 copies of *The Promise* have been published in Pashtu – the language of the northwest tribal region of Pakistan. The *Kuske Catechism* has been translated into Urdu and *The Promise* into Punjabi, a third language of Pakistan. The Sunday school ministry cares for 840 children. 175 children who are among the poorest of the poor attend seven "non-formal schools" after working in the fields all day to learn the stories of the Bible and how to read and write in Urdu and English as well as other subjects. Recently a television broadcast to the Muslim world was begun. Humanitarian efforts in free medical clinics and midwife training classes open many hearts and minds to the love of Christ.

APACHELAND: Five Apache men are now serving the churches and various ministries as pastors and evangelists. A long-range plan for Native American ministry is being discussed by the leaders of the ministries with the goal to continue to preach the gospel, serve the people, and grow the ministries on the Apache reservations. Blessings are abundant at both Peridot and East Fork schools as enrollments are on the rise, and the high school is looking forward to adding grade ten.

WELS MISSIONS

N16W23377 Stone Ridge Drive • Waukesha, WI 53188
414-256-3243 • wels.net/missions



HOMEMISSIONS

WELS MISSIONS OVERVIEW 2017

To learn more about WELS Missions, subscribe to *Forward in Christ* magazine at wels.net/fic.



2017-18 HOME MISSIONS PROJECTS

Milwaukee, Wisconsin: Mt. Lebanon Lutheran church and school is enhancing its ministry with the placement of a second pastor. Blessed with a growing church as well as a growing school, a second pastor will allow the campus pastor to visit and spend more time with prospective families. After three years, the congregation plans to be able to cover the costs of the second pastor.

Waukegan, Illinois: Immanuel Lutheran is enhancing its ministry for additional outreach and programs to the Hispanic population. Funding for three years will allow a second pastor to join the ministry and do more extensive Hispanic outreach. After three years, the ministry will transition back to the bilingual pastor as the first pastor will retire.

Little Rock, Arkansas: While this congregation has not had a full-time pastor for some years, recently the Lord has blessed the ministry with new active lay families. A new direction is being undertaken and a graduate was assigned to be the full-time pastor. The surrounding community is also growing and Lord-willing, so too the ministry.

Westminster, Colorado: This is multi-site ministry that is starting a new second campus. The mission is in a growing western suburb of Denver. A core group of members want to be a part of this new mission

campus. Twenty members have been canvassing, and more than 100 new prospects were met with excitement. Core group training has taken place through Praise and Proclaim.

Hendersonville, North Carolina: This new mission start is the daughter congregation of Living Savior in Asheville, N.C., in the South Atlantic district. Worship services have been already held in Hendersonville with more than 100 in attendance, 16 of those were new visitors and 10 of those were the result of a door-to-door visit. The 17-member core group is committed to the effort and the financial support for this effort is note-worthy.

Huntersville, North Carolina: Grace Lutheran Church in Charlotte, N.C., is the mother congregation to help get Huntersville started. The pastor at Grace has been conducting worship services and has the support of nearly 20 core group members.

Chattanooga, Tennessee: The purpose of every home mission is to reach more souls with the gospel of Jesus Christ. By planting a mission in Chattanooga, the ministry effort will not only reach new people, but also serve WELS members. Currently there isn't a WELS church within 100 miles of Chattanooga.

WELS MISSIONS

N16W23377 Stone Ridge Drive • Waukesha, WI 53188
414-256-3243 • wels.net/missions



HOMEMISSIONS

WELS MISSIONS OVERVIEW 2017

If you would like to support Missions,
please visit wels.net/give.

CAMPUS MINISTRY

The WELS Campus Ministry Committee (CMC) is an eight-member committee of laymen and pastors who serve under the Board for Home Missions. The CMC exists to assist congregations in ministering to college students and other young adults with the means of grace so that they may grow in the faith and be trained for service in Christ's kingdom. These congregations reach out to about 6,500 students. Please consider finding someone in your congregation to gather each college-age student's educational plans and share it with the CMC.

To sign up and learn more about submitting information, visit wels.net/campus-ministry.

CROSS-CULTURAL MINISTRY

Approximately 28 percent of the Board for Home Mission (BHM) budget for fiscal year 2017-18 is allocated to cross-cultural and multi-ethnic ministries. Not only does the BHM support assist ministries in North America, there are people groups which are reaching back to their country of origin to share the good news of Jesus Christ with family and friends.

MULTI-SITE CONGREGATIONS

The multi-site approach to congregational ministry is growing as a way to reach more people and bring mission work to more congregations by starting new churches in new locations. Under the multi-site model, a congregation has two or more physical locations, but is organizationally one congregation with one financial budget.

CHURCH EXTENSION FUND (CEF)

This non-profit lending agency assists missions in buying land and building a worship facility / buying a facility which is renovated into a worship facility. In addition to granting low-interest loans, since 1993, CEF has also provided more than \$30 million in grants to qualifying

mission churches. Starting in fiscal year 2017-2018, CEF has set up an endowment which should payout around \$800,000 each August to assist Home Missions in starting more missions. To learn more or to invest in CEF, go to cef.wels.net.

MISSION SUPPORT

Home Missions is thankful for its budget from Congregational Mission Offerings of \$5,555,000 for fiscal year 2017-18 as well as special gifts to Home Missions. In addition, the Joint Mission Council through its endowment payout, is contributing \$170,000 this coming fiscal year to help support North America cross-cultural ministries.

The Board for Home Missions (BHM) is made up of 29 members: 14 pastors, 14 laymen from the district mission boards, and Chairman Rev. Wayne Uhlhorn. Rev. Keith Free, Home Missions administrator; Rev. Larry Schlomer, World Missions administrator; Mr. Sean Young, director of Mission Operations; and seven full-time staff members serve Home and World Missions at the WELS Center for Mission and Ministry.

SPECIAL GIFTS

Special gifts to WELS Missions have allowed WELS as a church body to reach more souls by way of opening new missions and supporting new ministries. To offer a special gift or for more information, visit wels.net/give.

We thank the Lord for those who support the ministry of our church body. Through these gifts we can reach many souls with the precious gospel of Jesus Christ.

WELS MISSIONS

N16W23377 Stone Ridge Drive • Waukesha, WI 53188
414-256-3243 • wels.net/missions



WELS Christian Aid & Relief

Volunteer Application Form

Title: Mr./Mrs./Dr./Pastor_____	Marital Status:_____
First Name:_____	Spouse's First Name:_____
Last Name:_____	Last Name:_____
Address:_____	Land Phone:_____
Address 2:_____	Cell Phone:_____
City:_____	Email:_____
State:_____	Pastoral Reference:_____
Zip:_____	Church Name:_____
Phone:_____	Church Phone:_____
Phone Type: Land Line/Cell_____	*Insurance:_____
Email:_____	Policy Numbe:_____
Date of Birth:_____	Name on Insurance:_____
T-Shirt Size_____	<small>* All accidents are covered by volunteer's primary insurance, next by any additional personal insurance. Additional medical expenses can be applied for to WELS insurance Church Mutual.</small>

Emergency Contact Information

First Name:_____
Last Name:_____
Address:_____
Address 2:_____
City:_____
State:_____
Zip:_____
Phone:_____
Phone Type: Land Line/Cell_____
Email:_____
Relationship to Volunteer:_____



SUMMER 2017

WISCONSIN LUTHERAN SEMINARY SPOTLIGHT

RECRUITMENT EFFORTS

This year, Senior Paul Spaude is serving as our student recruiter. He makes about two presentations a week at area grade schools and reaches out to high schools and prep schools. The seminary also hosted a Grade School Chapel Service in December. The service encouraged 300 students and 50 chaperones from 13 Lutheran elementary schools in their walk with Christ and gave them the opportunity to visit with seminarians, explore the campus, and learn more about the path men take to become pastors.

For high school students, we offer Taste of Ministry. This allows area Lutheran high school students the chance to tour campus, observe a class, worship in chapel, hear from Pres. Wendland, and listen to student presentations about dorm life, studies, jobs, mission trips, and their seminary experience.



*As part of a recruitment for ministry tour,
Michigan Lutheran Seminary students visited the seminary.*

For the second year, we are hosting Seminary Scurry. This 5K gives our seminary friends and neighbors the opportunity to spend a morning on campus and see where future pastors are being trained. With a kids' fun run, it gives us the opportunity to encourage them to consider the ministry.

SENIOR THESIS PRESENTATIONS

As part of the requirement for graduation, each senior completes a thesis—a capstone paper in an area of their choosing. In March, students presented their research and papers on campus. The diversity of the theses reflects the diversity of the students' interests within the body of Christ. Topics ranged from ministering to recovering alcoholics to preaching the Law to Christians, from a pastor's struggle as both sinner and saint to equipping Christian soldiers before their deployments, from reaching out to former prisoners to ministering to men who had a dysfunctional father figure.

“You spend so much time poring over ancient texts,” said President Paul O. Wendland. “The essay gives you an opportunity to discover something new for yourself, to investigate a problem or issue and write something about it.”

This year Peter Schlict and Nathan Schulte won the Timothy and Titus Awards for their work. These awards recognize the high caliber of work and reflect how the seminary continues to train the next generation of those who will preach the gospel. All the theses are available at essays.wls.wels.net.



PSI UPDATE

Nixon Gregorio Vivar Gomez graduates this May from the Pastoral Studies Institute. Nixon qualifies for the status of “non-traditional” student for the pastoral ministry on multiple levels. Most obviously, as an immigrant from Ecuador, coming to the United States in 1999 as an optimistic 21-year-old with no English skills, Nixon has already earned the title, “non-traditional.” What makes Nixon especially unique is that his journey to become a WELS pastor has taken 15 years.

Much life was squeezed into this 15-year journey. Nixon married Carla. The couple had two sons, Lucas and Samuel. Nixon became a “permanent resident” of the United States and learned English. Nixon and Carla bought a home. A constant in Nixon’s life and also his married life over the years has been their service to God’s people on the south side of Milwaukee. Nixon and Carla have served under the supervision and encouragement of half a dozen WELS pastors in various churches. Nixon completed courses while struggling through issues of employment, citizenship, extended family, and young children. But this May, Nixon will receive the prize for which he has labored. He will graduate from our seminary through the Pastoral Studies Institute. All of his pastors and teachers praise God for helping Nixon accomplish this task. Nixon has received the strongest recommendation from all of his mentors.

Congratulations, Nixon and Carla. May God continue to use you to proclaim his praises.

UPCOMING EVENTS

May 16, 7 pm: **Vicar Call Service**
May 18, 10 am: **Call Day Service**
May 18, 7 pm: **Graduation Concert**
May 19, 10 am: **Graduation**
June 19-30: **Summer Quarter**



GROW IN GRACE: THE INSTITUTE FOR CONTINUING EDUCATION

UPCOMING CHANGES TO SUMMER QUARTER

For years, pastors have had a choice of ways to participate in Summer Quarter: on the seminary campus, online or at a satellite location. Although Mequon has been a great location, in the future we hope to become more accessible to pastors in outlying districts. Therefore, beginning in 2019, Grow in Grace will provide a program with the intensity and variety of an on-campus experience, but in the other 11 districts. It will also allow pastors who are pursuing the Master of Sacred Theology Degree to have more opportunities to take a course in their area of study.

Summer Quarter 2017 and 2018 will remain on campus in Mequon and unchanged by this future planning. Beginning in 2019, Summer Quarter will go “on the road” during odd numbered years and take place in Mequon during even numbered years.

CELEBRATIONS OF MINISTRY ADDS FOURTH RETREAT

The success of the Celebration of Ministry Retreats, which began in 2012 with one retreat, has now grown to four retreats. These retreats are held for pastors and their wives who have reached key milestones in their ministry. In previous years, Grow in Grace has invited pastors who are celebrating three, 10, or 25 years since graduation to celebrate in sunny San Antonio. Beginning in 2018, pastors celebrating 35 years since graduation will be invited to join Grow in Grace on the Riverwalk in San Antonio, Texas. To the classes of 2015, 2008, 1993, and 1983, watch for your invitations coming in late May!



From the President

Grace alone. Faith alone. Scripture alone. Christ alone.



Those Spirit-worked convictions filled Martin Luther and changed his life. Those same convictions are etched on the four outside walls of the Chapel of the Christ.

We pray that the Spirit again unleash his omnipotence through the Word and etch those convictions upon the hearts and souls of the campus family at MLC, and in so doing change lives.

This year is not simply an historical review of amazing events. This year is not just an occasion to have some special lectures and events to contemplate a spiritual heritage.

It is a yearlong opportunity to pray. To pray petitions of gratitude to our Savior Jesus, that he raised up a sinful human as an instrument of his Word to restore clarity to the preaching and teaching of the gospel. To pray petitions asking that the Savior continue the Spirit's breath of reformation upon each heart and soul at this place. To pray petitions that the reformation remain an ongoing reality in all our hearts and souls.

Music Ensembles on Tour

Tour season for the MLC College Choir extended from February 17 to April 2. The 60 choir members and their conductor, Dr. Kermit Moldenhauer, performed 10 concerts in Texas and New Mexico and conducted mini-tours in Minnesota and Wisconsin, performing 18 works in their program. You can view the home concert, which includes the tour program, on the MLC Streams page. The 42 members of the Wind Symphony, under the direction of Professor Erin Meissner, will take their spring concert on the road in May, with stops in Minnesota, Wisconsin, Michigan and Ontario. Plan to attend a performance near you or follow the group online at the MLC Facebook page.



Daylight USA – Here We Are, Send Us!

Martin Luther College students are eager to prepare for ministry, and they are even more eager to participate in ministry experiences across the United States. The MLC Daylight program has matched hundreds of future pastors, teachers, and staff ministers with congregations who have benefited from help in reaching out to their communities.



In groups of various sizes, MLC students sign up to assist with sports camps, vacation Bible school, neighborhood canvassing, and other outreach activities during spring and summer break. After a recent short-term mission in New York, one student wrote, "Rewards of ministry are always abounding. I can confidently say my attitude for the ministry has been strengthened." Another wrote, "Being a messenger of the gospel is such a blessing and privilege." They are eager to help your congregation! If your congregation would benefit from one or more students assisting in outreach this summer or next spring, contact MLC campus pastor John Boeder. He will help you plan a short-term mission that will be a blessing to the students and to your gospel outreach.

Commencement 2017 by the Numbers

Official graduation totals for our May 13 commencement service:
Total – 145, Education – 94, Preseminary – 33, Graduate Studies – 18

MLC Day May 3!

MLC Day was a day of celebration for our college and all who support our ministry.

Pray, Share, Give was our focus of our third annual event. That focus guided out messages shared with all our online friends and supporters. We are grateful for the 1,575 unique visitors to our MLCDay.com page!

Pray for our mission and ministry. We posted prayers that our supporters sent in for our students and our programs. Thank you for your heart-felt messages sent from 21 different churches and schools!

Share our message with friends. Those who have a heart for ministerial education visited our website. Visitors from 49 states and 46 countries made their mark on our MLC Day map. They shared their photos, videos, and messages with our thousands of Facebook friends!

Give to support our work. This year our goal was to fund 100 Congregational Partner Grants for MLC students at \$1,000 a student. A generous donor matched the first \$50,000 donations dollar for dollar. Thank you to all who made our total of \$95,000+ contributions possible!



Alumni Tours Popular

The 2017 tour to the Ark Encounter, Creation Museum, and other notable Kentucky sites had an overwhelming response, with two buses completely sold out. A June 18-July 4, 2018, tour to the LutherLands, Austrian Alps, and Italy is being planned, with promotional and registration materials slated to go out in August. Guides and chaplains for the journey will include President Mark Zarling and Professors Jim Danell, Paul Koelpin, and Keith Wessel. The tour is open to all WELS members. Those interested in being added to the mailing list should contact Steve Balza at alumni@mlc-wels.edu or [507-217-1731](tel:507-217-1731).



Congregational Partner Grant Program

The success of MLC's new Congregational Partner Grant Program (CPGP) surpassed all expectations. The God who *is able to do immeasurably more than all we ask or imagine* allowed for 54% of the 2016-2017 incoming first-year students (106) to receive their congregation's grant (\$87,000) and MLC's dollar-for-dollar match, for a total of \$176,000. The MLC Governing Board approved expansion of the program to rising first-year and sophomore students for this upcoming 2017-2018 school year.

Congregations have found that the CPGP has become a very tangible way for members to support sons and daughters of the congregation who are training for the public ministry. At the same time, students at MLC receive much encouragement in knowing that others are praying for them and supporting them financially.

Go to mlc-wels.edu/financial-aid/congregational-partner-grant-program for more information.



Year Two of MLC Direction

MLC Direction is the financial literacy program at MLC that offers students guidance on many financial topics to help them become better stewards of their finances now and in the future. New this year were two required group sessions: juniors focused on credit and making smart financial decisions, and first-years focused on basic money management.

Approximately 100 graduating seniors, 85 first-year students, and 10 transfer students completed a personal consultation with MLC's financial literacy coordinator first semester of 2016-2017.

If you have questions related to this report or other matters related to our ministry at Martin Luther College, contact us at mlcinfo@mlc-wels.edu.

facebook.com/mlcwels
twitter.com/connect2mlc
vimeopro.com/martinluthercollege/promotional-videos
instagram.com/martinluthercollege





DEADLINE TO REGISTER IS JUNE 21!

NEW THIS YEAR! Air Conditioning in the Dorms for Those Who Register Early!

SUMMER COURSES FOR PASTORS

MARTIN LUTHER COLLEGE CAMPUS

Ninth Annual

HEB9002 HEBREW REVIEW JULY 10-14, 2017



Monday 8:00 am – Friday 12:00 pm
1 Credit

Instructor: Dr. Mark Paustian
paustima@mlc-wels.edu

The Summer Hebrew Review is designed for busy parish pastors who desire to regain and enhance their skills for working in the original language of the Old Testament. It will also benefit students in the WELS worker training system whose studies have been interrupted and who now intend to continue their theological training.

Eleventh Annual

HEB9001 HEBREW INSTITUTE JULY 17-21, 2017



Monday 8:00 am – Friday 12:00 pm
1 Credit

Instructor: Professor Thomas Nass
nasstp@mlc-wels.edu

The Summer Hebrew Institute is an upper-level course in biblical Hebrew for pastors with a strong interest and ability in Hebrew. The heart of the course this summer will be the rapid reading of Ezekiel in Hebrew (about 22 pages from 12 chapters). This will be the first time that the institute has taken up one of the major prophets, and it will push us into some fascinating content.

For your convenience, the Hebrew courses are scheduled so you can take one or both.

GER9001 GERMAN INSTITUTE JULY 17-21, 2017



Monday 8:00 am – Friday 12:00 pm
1 Credit

Instructor: Professor Jim Danell
danelljc@mlc-wels.edu

The Summer German Institute is an upper-level course in theological German for pastors with a strong interest and ability in German. Students will improve their ability to read theological German for content, increase their theological German vocabulary, locate online digitized texts by confessional Lutheran theologians, and read older German utilizing online dictionaries.

COSTS

Tuition & fees (*for one course*)\$315
Tuition & fees (*for two courses*).....\$610
Room & linens.....\$80/wk
Lunch plan only (M-F)\$25/wk
14-meal plan.....\$60/wk

REGISTER EARLY! Limited number of
air-conditioned rooms available.

Register at mlc-wels.edu/go/ce

**Registration deadline for
all on-campus courses is
June 21, 2017.**

*For questions about the course,
please contact the instructor.*

*Please direct all other questions to
continunged@mlc-wels.edu, 507.354.8221 x 365*

WELS Evangelism Certificate

This certificate program is intended to be used by lay and/or called workers in congregations to gain the understanding and skills to lead, create, and participate in congregational evangelism efforts.

The goals of the Evangelism Certificate program are to develop congregational evangelism leaders who understand the scriptural foundation for a congregation's evangelism ministry, can evaluate and plan congregational evangelism efforts, are equipped to give an answer for the hope they have in Christ (1 Peter 3:15), and seize opportunities for personal evangelism in all aspects of their lives.

Participants in the program will complete three online 1-credit courses to earn an Evangelism Certificate. These three 1-credit courses were developed with the goal of keeping costs low and the time commitment reasonable for the participants.



WELS Chaplain Certificate

There is a growing need to share the love of Christ with people who are experiencing special life situations, including but not limited to those who are serving in the military or confined to hospitals, correctional facilities, and/or other private and public residences. WELS called workers and lay workers are increasingly drawn to participate in such ministries.



As these opportunities for gospel ministry increase, those specializing in this ministry are required to be better trained and to carry qualifying credentials, certificates, and appropriate degrees for various forms of chaplain care. The WELS Chaplain Certificate has been designed and implemented to prepare and qualify pastors and lay workers for these specialized ministries.



WELS Congregational Assistant Program

The mission of the Congregational Assistant Program, under the guidance of Martin Luther College, is to assist pastors in training qualified and confident leaders in their Wisconsin Evangelical Lutheran Synod (WELS) congregations. CAP provides a range of biblical and practical courses available to all WELS members to help them grow in the grace and knowledge of our Lord and Savior Jesus Christ. Our curriculum will have your members studying Bible history and doctrine, training in evangelism, witnessing to those of other faiths, teaching Bible studies, and learning more about Christian family and leadership.

The work an assistant may do depends on the congregation's needs and the worker's talents. Some areas of service include outreach, evangelism, senior ministry, youth and family ministry, adult spiritual growth, visitation ministry, and mentoring and coordinating volunteers. An assistant call could take the form of a volunteer or a salaried position.

Courses are typically taught by the local pastor and are often



scheduled as part of the congregation's regular scheduled Bible studies, which help to minimize extra work for the pastor while expanding opportunities for nurturing within the congregation.

Our program enrolls men and women of all ages who are either currently serving or merely seeking spiritual enrichment. Their common interest is a desire to know their Lord and Savior more intimately.

**Call Dr. Lawrence Olson or Tami Lott
for more information at 507.354.8221.**



Educational Technology

On Campus

EDT8001 02 Activities in Using the SMART Board 1 credit

Philip Dretske Jul 17 - 20 MLC - New Ulm MN

EDT8018 02 SMART Board for Intermediate Users 1 credit

Philip Dretske Jul 17 - 20 MLC - New Ulm MN

On Location

EDT8001 01 Activities in Using the SMART Board 1 credit

James Grunwald Jun 26 - 29 Luther Prep - Watertown WI

EDT8017 03 Using Google Tools to Communicate, Create, and Collaborate 1 credit

Carolyn DeLorme Jun 12 - 30 Online

EDT8018 01 SMART Board for Intermediate Users 1 credit

James Grunwald Jun 26 - 29 Luther Prep - Watertown WI

Online

EDT8011 01 Dynamic Classroom Presentations 1 credit

Martin Spriggs Jul 10 - 28 Online

EDT8101 01 Technologies for Preschool – 2nd Grade

1 credit

Robert Martens Jul 10 - 28 Online

EDT8501 01 Multimedia Apps for the Classroom 1 credit

Richard Bakken Jun 12 - 30 Online

Early Childhood

On Campus

EDU3102 01 Infant and Toddler Educare 3 credits

Jennifer Mehlberg Jul 10 - 21 MLC - New Ulm MN

On Location

EDU8103 01 Developing Home & School Relationships

1 credit or 12.5 clock hours

Cheryl Loomis Jul 27 - 28 Country Inn and Suites
Port Orange FL

EDU8108 01 Preprimary Curriculum Essentials I

1 credit or 12.5 clock hours

Susan Haar Jun 15 - 16 Jerusalem LES
Morton Grove IL

EDU8108 02 Preprimary Curriculum Essentials I

1 credit or 12.5 clock hours

Jennifer Mehlberg Jun 29 - 30 Good Shepherd LES
Burnsville MN

EDU8109 02 Preprimary Curriculum Essentials II

1 credit or 12.5 clock hours

Susan Haar Jun 20 - 21 Fox Valley LHS
Appleton WI

PED8101 01 Physical and Motor Development

for Preprimary 1 credit or 12.5 clock hours

Daniel Gawrisch Jun 22 - 23 Zion LES - Hartland WI



MLC classes pertained directly to what I do in my classroom. I've become a more effective teacher, and my congregation benefits. They see firsthand that their teachers are concerned with honing their skills.

Cynthia Lange, St. Luke -- Vassar MI

Webinars

WEB0102 01 Differentiating Instruction to Benefit All

Learners 4 clock hours

Carrie Pfeifer Jul 17 - 24 Online

WEB0104 01 Instructional Strategies for Students with

Attention Disorder 4 clock hour

Carrie Pfeifer Jul 10 - 17 Online

WEB0105 01 Instructional Strategies for Students with

Literacy Disorders 4 clock hours

Carrie Pfeifer Jul 24 - 31 Online

WEB0106 01 Instructional Strategies for Students with

High-Functioning Autism 4 clock hours

Carrie Pfeifer Jun 19 - 26 Online

WEB0201 01 Principles of Public Speaking 4 clock hours

D. Sellnow/L. Czer Jun 7 - 14 Online

WEB0801 01 Teaching the Faith: Will We Instruct or

Indoctrinate? 4 clock hours

David Sellnow Jul 26 - Aug 2 Online

READY-TO-GO

Faculty Inservices for the Entire Year

PDS0102 02 Six Highly-Effective Teaching Strategies

John Meyer Online

PDS0103 02 Helping Every Child Succeed

Cynthia Whaley Online

PDS0801 02 Conflicting Worldviews

Steve Thiesfeldt Online

PDS0802 02 Foolishness of God

Steve Thiesfeldt Online

Register for a course today at mlc-wels.edu/continuing-education

PRACTICAL

Courses for All Areas of Ministry

- **Master of Science in Education**
Emphases in Educational Technology, Instruction, Leadership, Special Education
- **Master of Science in Educational Administration**
Principal, Early Childhood

Courses Directly Applicable to Your Classroom

- Learn it
- Apply it in your classroom
- Get feedback from instructors and colleagues

Expert Instructors Who Understand WELS Schools

- WELS members
- Experts in their fields of study from a variety of institutions



As you go through the MLC master's program, you get a chance to use it in your classroom along with the support of the instructor.

*Joanna Smith
MS Ed '16*

CONVENIENT

All Courses Online

- 36 credits required
- Customizable schedule – finish in 18 months to 7 years

Fits into Your Life Right Now

- Teach full time
- Raise a family
- And finish your master's degree

Match Your Master's Degree to Your Ministry

- 50 courses available with plans to develop more
- Courses in technology, instruction, leadership, special education, and early childhood available to everyone

The flexibility of the program allowed me to further my ministry at the place where I was serving, to be a father, and to be a husband, and it allowed me to grow in my knowledge of leadership.

*Brian Mensching
MS Ed '12*



AFFORDABLE

According to "The Best Master's Degrees" website, there are 280 colleges across the country offering online master's programs in education. Of them, *MLC ranks third most affordable.*

Today is the day to join the other 124 educators currently enrolled in the program. MLC has awarded 92 MS Ed degrees since it began its master's program in 2005.

My school and church congregation were very supportive financially and gave me a lot of encouragement to go into this.

*Michael Peek
MS Ed '12*



LUTHER PREP

Summer 2017 Update



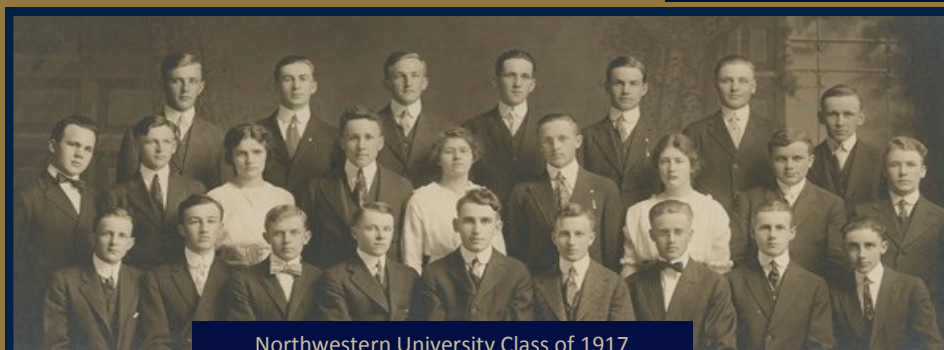
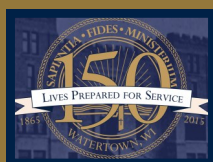
The 90 members of the Luther Preparatory School Class of 2017 officially completed their high school training on May 20, 2017. The achievement was commemorated with a service of thanksgiving in the Luther Prep gymnasium.

CHANGELESS MESSAGE AND TIMELESS MISSION

A German pastor 500 years ago, named Martin Luther, was on a mission. His mission was to refocus the world on the Bible's message of salvation by God's grace alone. Luther Preparatory School continues the work of its namesake by proclaiming the uniquely Lutheran message of the three solas - Sola Gratia (grace alone), Sola Fide (faith alone), Sola Scriptura (Scripture alone). That changeless message of Scripture centered on full and free salvation won by Christ is the message of Luther Prep.

Hand in hand with that message goes a mission. This mission is to proclaim this precious message of salvation by God's grace alone to all people. This mission happens in the everyday lives of all believers, but especially in the lives of Christian pastors and teachers. Martin Luther expressed this mission when he wrote in 1529, "God needs a pastor, a preacher, a teacher in His spiritual kingdom; you can supply Him with one." God chooses to spread his saving message through people like you and me, and he needs more pastors and teachers to serve as full-time Gospel proclaimers. That timeless mission of supplying God's church with pastors and teachers is the mission of Luther Prep.

Matthew A. Crass, President
Luther Preparatory School



Northwestern University Class of 1917

May 20, 2017 was LPS graduation day. This marks a high point in the first phase of preparation for the public Gospel ministry. That first phase is the beginning of an eight, nine, or twelve year program of training for a Prep grad. At the end of phase two 25 will have attended MLC for four or five more years to become Lutheran elementary or high school teachers, or staff ministers. The 13 men from the LPS Class of 2017 who continue their preparation for the pastoral ministry will go on for four more years at WLS. Classmates who have made other plans for their future have been prepared each day for the last four years to enter the world as future dedicated laymen and women of their congregations. Pray for all of them as they continue the tasks of service that lie ahead of them.

LPS Summer 2017 Update



LPS Grads from WLS



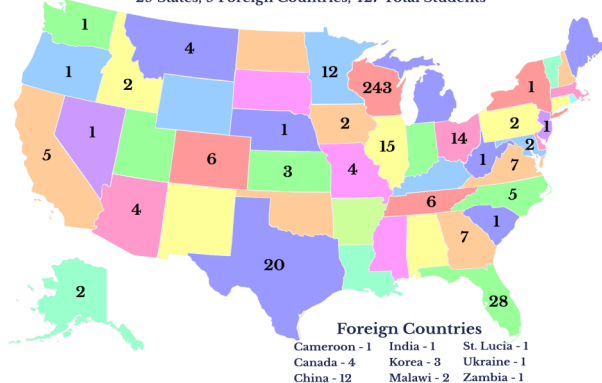
L-R: Ross Chartrand, Nathan Schulte, Jacob Jenswold, Peter Schlicht, Samuel Crass, Joshua Jensen, LPS President Matt Crass. Missing is John Schwartz.

Luther Prep Enters Parental Choice

By Governing Board resolution, Luther Prep has entered into the Wisconsin Parental Choice Programs for the 2017-2018 school year. In these programs Wisconsin parents who fall below a state determined income level receive a voucher from the State to pay their child's tuition. Luther Prep has received 43 applications, all of which are WELS students.

Luther Prep School Student Body 2016-17

29 States, 9 Foreign Countries, 427 Total Students



Spring at Prep



PHOTOS TOP LEFT-GRATEFUL BEASTS, SOFTBALL, SPRING, APRIL ARBOR DAY, TOP 11 TERTIANERS, GALA XII

LPS SUMMER 2017 EVENTS

JUNE

- 9-11 Father-Son Overnight Basketball Camps (2)
- 11-17 Boys Overnight Basketball Camps (2)
- 18-24 Girls Overnight Basketball Camps (2)
- 24-25 Parent-Daughter Overnight Basketball Camp
- 26-29 Little Hoopsters Basketball Day Camp

JULY

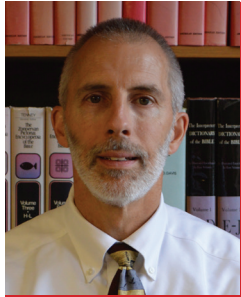
- 9-15 Girls Overnight Volleyball Camps (2)
- 31-Aug 3 WELS 64th Biennial Synod Convention

AUGUST

- 18-20 LPS Registration Weekend
- 21 Start of 2017-18 School Year

SEPTEMBER

- 22-24 Homecoming Weekend



A Message From The President

Unrest in the U.S. over President Trump's first 100 days. Bombing in Manchester, England. Missile launches in North Korea. Political turmoil in France. Heroine overdoses on the rise. Storms battering the midwest and south. These are all just some of the headlines that are or could be fixed on the mantels of our news media. Our world doesn't sound like such a great place to live. Suicides are at their highest levels since 1988. The gap between the "haves" and "have-nots" is growing. The diversity and dichotomy in the political arena is more pronounced and perhaps more animos than ever.

New government, change of leaders or new laws perhaps can make some improvement in this chaotic landscape, but only one thing can bring about real and lasting change. Only the gospel of Jesus Christ calms troubled souls and transforms unloving hearts. There is always a shortage of pastors and teachers because there is always the need for children and adults to be taught the life-changing truths of God's Word. That's not to say the gospel message will fix all the problems of society. However, the gospel gives people hope and peace in the midst of the chaos. The gospel moves people to put away animosity and violence and live in love and harmony with one another.

MLS needs to still exist because our world still needs the ministry of the new covenant, not of the letter, but of the Spirit. MLS needs to continue to fill its seats with students so that our world has hope in the continued supply of servant-leaders who fix their thoughts on Jesus and teach others to do the same.

Serving Jesus with you,

Joel V. Petermann
Joel Petermann, President

End Of The Year Numbers

Ending enrollment for 2016-2017: 216

(Fr - 62; So - 54; Jr - 48; Sr 52) (103 boys, 113 girls)

Dorm students for 2016-2017: 135 (65%)

Applications for the Freshmen class of 2017-2018: 48

Applications for the upper classes for 2017-2018: 5

Applications accepted to date: 41 freshmen and 5 upperclassmen.

Graduating Class of 2017: 52

Percent going to MLC: 50% (26 of 52)

(6 pastor track, 20 teacher track)

International students in graduating class: 5 (2 going to MLC)

Costs for 2017-2018: Non-boarding: \$6635; Boarding: \$10,820

Did You Know?

26 MLS students of 240 incoming students at MLC

(MLS students = 10+% of incoming class)

MLS and LPS grads comprise 40-45% of incoming MLC class for 2017-2018

Total MLS students at MLC = 10% of entire student body

27 MLC graduates going to WLS - MLS = 5 of those (20%)

11 (13%) of the 85 organ students at MLC are from MLS

Our goal of at least 8 new students/year at MLS

from outside the MI district is being met

Faculty Changes

At the end of this school year we will be saying farewell to two faculty members, one tutor and an emergency instructor. **Professor Jon Huebner** accepted a call to teach at St. Croix Lutheran High School in West St. Paul, MN. **Professor James Wooster** is retiring at the end of the 2016-2017 school year. **Tutor Josh Schultz** has completed his two years of tutoring and has been assigned to Mountain View Lutheran Church in Great Falls, MT. **Elizabeth Broring**, who had been called as a one-year emergency instructor for Spanish, will complete her service and return to MLC to finish her schooling.

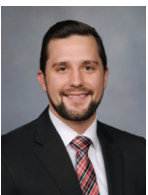
Meanwhile MLS has been blessed to have six incoming staff members. **Eric Scheuerlein** accepted our call to teach upper level math and will be arriving this summer. **Lauren Maertz** who has completed two years of tutoring was assigned for a third year as an instructor in the science department. She will teach biology, science electives and one phy ed section. **Alyssa Maertz** was assigned to replace Lauren as tutor in the girls' dormitory. **Ross Chartrand** was assigned from WLS to replace Schultz as tutor. **Nathan Guhl** was assigned as a one-year instructor to teach physics and chemistry. **Brooke DeAnda** was assigned as a one-year instructor to teach Spanish. We are thankful to the Lord of the Church for supplying us with a full staff again for next school year. MLS will likely begin the calling process for some permanent professors in the fall.



Huebner



Wooster



Schultz



Broring



Scheuerlein



L. Maertz



A. Maertz



Chartrand



Guhl



DeAnda

MLS UPDATE

MCG Activity At MLS

The week after graduation at MLS there will still be plenty going on at MLS. One thing that is noteworthy is the meeting of the Ministry of Christian Giving (MCG) on our campus from May 30 until June 2. The reason for this meeting on our campus is so that the Christian Giving Counselors (CGC) can see MLS and become acquainted with our faculty and facilities. Beginning in June, 2017 and through July, 2018, they will be sharing the case for MLS with their donor contacts in the WELS. In the fall of 2017, President Petermann will be traveling with them making visits in all 12 of our synod's districts to share the MLS story. This will take place as part of an opportunity that each of the BME schools has had to receive special emphasis from the MCG for a year. Please pray that the Lord blesses this campaign. It is a silent campaign which means that the WELS general membership will not be solicited for offerings. Gifts given through this campaign will be used for student financial aid, capital projects and to build up MLS financial reserves.



IMPORTANT DATES

FOOTBALL CAMP BEGINS

August 6, 2017

VOLLEYBALL AND CC CAMPS BEGIN

August 13, 2017

REGISTRATION (8 a.m.) & OPENING SERVICE (3:30 p.m.)

August 19, 2017

ORIENTATION DAY FOR STUDENTS

August 20, 2017

FIRST DAY OF 2017-2018 SCHOOL YEAR

August 21, 2017



June 11-14, 2017

Girls' Basketball Camp - Grades 5-9

June 14-15, 2017

Girls' Volleyball Camp - Grades 6-9

June 18-21, 2017

Boys' Basketball Camp - Grades 7-9

June 21-23, 2017

Boys' Basketball Camp - Grades 5-7

June 21-23, 2017

Boys' Football Camp - Grades 7-9

June 24, 2017

Father/Son Football Camp - Grades 4-6

July 10-14, 2017

Fine Arts Camp - Grades 2-6

MLS Joint Adventure

The idea of sending a student to a dorm school like MLS or LPS sounds foreign to most families. In fact, only seven dorm schools exist in the state of Michigan. A campus visit to MLS, though, provides an opportunity for families to experience MLS. They can visit classes, worship in chapel, stay in the dorms, meet the students and faculty, and more.

Distance and cost of travel may keep some from planning such a visit, though. That is why MLS runs the Joint Adventure program each year. MLS sets aside money to help defray travel costs for families, congregations, and churches visiting MLS. MLS will reimburse a portion of travel costs up to \$500 as funds are available.

As you make plans for next year, please consider using MLS' Joint Adventure and make a visit to MLS possible.



A System Worth Preserving

The Wisconsin Synod has a unique and valuable gem in our four-school, three-tiered system. This system, unlike any other, is praised and envied by other churches. It continues to supply well-trained workers to a world that more desperately needs their message with each passing year.



Our Mission

The special purpose of Michigan Lutheran Seminary is to prepare high school students for the public ministry of the gospel, encouraging them to enroll in the WELS College of Ministry, Martin Luther College. Our role, so well aligned with the other three ministerial education schools of the WELS, ensures the supply of young men and women whose training enables them to carry out the great commission of our Lord.



WELS

Christ's Love, Our Calling.

MICHIGAN LUTHERAN SEMINARY

2777 Hardin Street
Saginaw, MI 48602
Phone: 989.793.1010
Fax: 989.793.4213

I thank God every time I remember you. In all my prayers for all of you, I always pray with joy because of your partnership in the gospel from the first day until now.

Philippians 1:3-5

MDHH is here for YOU

WELS Mission for the Deaf and Hard of Hearing (MDHH) has a variety of resources available to encourage and assist pastors, teachers, congregations, interpreters, families and members in their outreach to people with a hearing loss.

Available on the MDHH Resource Center (csm.welsrc.net/mdhh):

- "Assistive Listening Devices" flyer includes information on hearing loops and FM systems.
- VRI (Video Remote Interpreting) information.
- Directories of congregations with hearing loops, signed services.
- "Difficult Liturgy Phrases" flyer suggests sign solutions for interpreters in church.
- View a PowerPoint presentation sharing "10 Things to Know about Ministry to People with Hearing Loss."
- "Deaf and Hard of Hearing Sunday" suggestions.
- *Open to All* video at wels.net/deaf gives tips in serving the deaf and hard of hearing in the congregation.

Available upon request:

- MDHH brochure describes our mission/goals.
- "Understanding Hearing Loops" brochure shows how hearing loops work and answers questions.
- *By Grace Alone*, adapted, is the adult instruction manual for use with deaf adults. Introduction in MDHH Resource Center, manual free on request.
- *Jesus Loves the Little Children* Coloring Book shows how to sign the popular story.
- Lord's Prayer Poster illustrates the Lord's Prayer in sign language.
- Manual alphabet bookmarks.
- Offering envelopes encourage members in congregations to support MDHH's work.
- Placemats for use at church or school meals show the table prayer in sign language.



Video resources from Special Ministries:

- *Easy Bible Lessons* CD with 36 lessons/Bible stories written at two levels of reading and understanding, has stories, color pictures, teacher's guide, and crafts.
- *Signed Bible Stories* DVDs (4) feature the same 36 Bible stories in Pidgin Signed English.
- *Christian Worship: Signing the Lutheran Liturgy* DVDs (2) show the liturgies of *Christian Worship* in sign language.

Other resources:

- *Sign to the Lord a New Song*, the largest religious sign language dictionary, has almost 800 entries. Available at NPH.net.
- Signed songs and prayers on Youtube.com/welsdhh.
- Speakers/bulletin board display available. Contact MDHH@wels.net.
- American Sign Language class taught online through MLC.

WELS Mission for the Deaf and Hard of Hearing

N16W23377 Stone Ridge Drive

Waukesha, WI 53188-1108

414-256-3241

specialministries@wels.net



Therapy Models (Psychological Terms)

**A Brief Review of Counseling Models
WELS Committee on Mental Health Needs**

Choosing a therapist to fit your needs can become a confusing experience. You probably will hear some “counseloreze”—the language of the counseling field—with which you are not familiar. Don’t worry, you are in the majority. Please remember: ALWAYS ASK QUESTIONS WHEN YOU DO NOT UNDERSTAND. You have some important decisions to make, and it is important to make informed decisions!

Christians need to be aware of the different approaches their therapist may use in their counseling. Likewise, pastors need to have some idea of the counseling models used by the therapists to whom they refer their members. This pamphlet is not meant to be an introductory course to psychological theory. Rather, it is intended to serve as a quick reference guide. A glossary of the terms printed in *italics* is provided at the back of the pamphlet. All counseling models have something to offer when used by a trained therapist. Some theoretical approaches work better than others, depending on your psychological or relationship needs. Some therapists have integrated several counseling models into their personal approach to counseling.



Traditional Counseling Models

Psychoanalytic: This model follows the teachings of Sigmund Freud. The emphasis is on the client’s childhood experiences and relationships with the parents, and on the client’s *psychosexual development*. Psychoanalysis seeks to uncover the secrets of the *human psyche* hidden in the *unconscious mind*. Psychoanalysts attempt to develop a relationship of *transference* with their clients, in which the clients relate to their analysts just as they did to their parents in childhood. During this process the client’s *defense mechanisms* are identified and replaced with healthy behavior patterns. Psychoanalysis usually takes many years to complete with 1-3 sessions every week.

Psychodynamic: This model does not follow Freud’s idea of psychosexual development. However, stages of *social development* over the life span are still important in this model. Lifetime experiences are examined and defense mechanisms are identified. The client is helped in learning appropriate decision-making skills and behaviors. Psychodynamic therapy often involves long-term therapy, but not as long as psychoanalysis.

The psychoanalytic and psychodynamic approaches propose that our childhood

experiences can strongly influence our reactions in the present without our even realizing it. This does not mean that our present behaviors are the fault of our parents, nor that our past determines our future. However, it does provide us with information necessary and helpful for changing the negative influences of our past.

Client-centered or Rogerian: Carl Rogers believed that reality for the individual is the sum total of one’s experiences and *perceptions* over a lifetime. According to Rogers, the goal of achieving one’s potential can be attained in counseling provided that the therapist provides an atmosphere of *genuineness*, *unconditional acceptance*, and *empathy*. The counselors are non-directive in that they refrain from sharing their own beliefs, values, or opinions with the client. They offer neither approval nor judgment of the client’s decisions. This also is long-term therapy.

Cognitive: The basic concept of this model is that our feelings and behaviors are the result of the way we think. The cognitive therapist seeks to help the client identify *cognitive distortions*, *irrational beliefs*, or *negative self-talk*. The therapist helps the client replace these faulty thought processes with *reality-based thinking*, so that the client experiences healthy emotions

and relationships. Cognitive therapy tends to be *didactic* in nature, *directive* in approach, and *collaborative* in process.

Behavioral: This model is very “scientific” in nature in that the counselor and client only work on what can be observed and measured. A problem behavior is observed; a plan for changing it is implemented; progress is measured and reported. Behaviorists believe that individuals are shaped by their *environment*. Some behaviorists believe that we learn through *conditioning*. Others believe that we can learn by observing the behaviors of others and the *consequences* of those behaviors. In either case, the theory is that, if the *antecedent* or the *consequence* of the client's behavior is changed, then the behavior of the client will be changed as well.

Cognitive-Behavioral: This approach is a blend of cognitive therapy and behavioral therapy. The client's thought processes are identified as well as the antecedents and consequences of the client's behavior. The clients are helped to make healthy changes in both their way of thinking and their behaviors. All three—cognitive, behavioral, and cognitive-behavioral—models are considered to be short-term therapy (3-6 months, possibly more).

Family Systems: This model views problems as belonging to the family rather than to any one individual. Each family member both influences and is influenced by the other members of the immediate family and the extended family. *Subsystems* are identified within the family. *Family of origin* issues are studied. *Genograms* are used to chart behavior patterns and experiences across several generations of the extended family. Even though there may be a *focus client*, the entire family is involved in therapy, so that *dysfunctional* family interaction patterns can be changed. Family systems therapy is directive, collaborative, and medium-term (6-12 months, or more).

Adlerian or S.T.E.P.: Adlerian therapy is the basis for the Systematic Training in Effective Parenting or S.T.E.P. program. It is believed that no two siblings have the same family experiences due to their different *psychological positions* in the *family constellation*. Mutual respect within the family is

a primary goal of therapy. The *family atmosphere* is identified, along with the *goals* of the child's *misbehavior*. Parents are taught to modify their reactions to their children's misbehavior, to encourage and nurture appropriate behaviors, and to use *logical and natural consequences* to discipline their children. Therapy is short/medium-term.

Both Family Systems and Adlerian family counseling offer many benefits in dealing with problems within the family context. No individual lives in a vacuum. Having an understanding of the family dynamics provides insight into the individual's view of himself or herself.

Twelve Step: This model is used by many *self-help groups* (e.g., Alcoholics Anonymous) and by most substance abuse treatment programs. The 12 steps of recovery begin with an admission of being powerless over one's addiction and a turning to a *higher power* of one's own choosing for help. The steps proceed through making an inventory of all wrongs, making amends for those wrongs, and helping others work through the 12 steps. Individuals are encouraged to take “one day at a time.” Self-help groups do not involve a professional therapist, while treatment programs and therapy groups are led by a therapist. Length of participation is up to each individual—some attend group meetings for the rest of their lives.

Medical Model: This model sees all mental disorders as being biological in nature; therefore, the primary treatment is *medication*. When medication is deemed necessary, it often is best to consult with a psychiatrist, because they have been trained in the prescribing and monitoring of psychotropic medications. Therapy often is used in conjunction with medical treatment. In fact, research shows that a combination of medication and therapy often produces the best results for the more severe disorders.

Eclectic: This means that the therapist is choosing from several theoretical models as the basis for their approach to counseling. However, usually there is one theoretical model that forms a foundation upon which certain aspects of the other theories are added. Usually eclectic

counselors practice short or medium-term therapy.

Eye Movement Desensitization and Reprocessing:

EMDR is often used with trauma victims. It is based on the *neurophysiological* hypothesis of “Accelerated Information Processing”. It is suggested that we have an innate physiological processing system in our brain that normally processes disturbing input in an *adaptive* manner. A trauma interrupts this adaptive information process and the traumatic memories are stored in an isolated *neuro network* that cannot connect with the other, more adaptive neuro networks. The use of *directed eye movements* together with *cognitive reprocessing* unblocks the traumatic information so that it can connect with adaptive thought processes, resulting in emotional relief and healing from the traumatic memories.

Solution-Focused: This is more a framework for therapy than a theory or model. It is adaptable to brief therapy (3-6 sessions or more). A problem is identified in terms of behaviors. *Exceptions* to the problem behavior in the client's life are identified as providing opportunities for change. A goal for counseling is explored. A solution plan is chosen that uses the client's present strengths and resources. The focus is on what changes can be made; emphasis is on the reality of the present.

Dialectical Behavior Therapy (DBT): DBT was originally devised and found to be effective for working with people who have Borderline Personality Disorder and who are suicidal. DBT has since been found useful in treating many other mental health issues as well as providing practical training for people who wish to improve their relationship skills. DBT advances the concepts of Cognitive Behavioral Therapy and Mindfulness and other effective therapies to treat a wide range of mental health issues. DBT includes *skill* training to help people who have mental health issues stemming from patterns of poorly regulated emotions, impulse control, interpersonal relationships, and self-image. The four major areas of DBT are:



- Core Mindfulness (cognitive skills used to help people focus on issues)
- Distress Tolerance (for those experiencing crises or who are over whelmed)
- Emotional Regulation (to promote emotional stability and enhance positive emotions)
- Interpersonal Effectiveness (people skills)

A disclaimer: some of the mindfulness skills find their origin in eastern religions and modern American spirituality. It will be important to find a therapist who uses DBT and downplays the non-Christian spirituality of DBT. The therapist should focus on the positive skill training that is available for his or her clients in DBT. These mindfulness skills should not be about clearing the mind of all thoughts. They should be about making oneself aware of one's thoughts and one's thinking process so that the thoughts and the thinking process can become more positive.

Conclusion

It is important to be sure that your spiritual needs as a Christian will be served and/or respected in therapy. It is important that your therapist explain the theoretical approach that will be used in counseling. The more information you have, the better prepared you are in making decisions throughout your therapy experience. Remember that in all things God's Word is the final authority to which all else, including counseling models, must submit.

Glossary of Psychological Terms

Psychoanalytic

- ▶ *Psychosexual development*: our personality develops in early childhood through the positive acceptance of our own sexuality for the purpose of survival and pleasure.
- ▶ *Human psyche*: The human spirit, the life force or energy that drives a human to seek pleasure and reduce anxiety.
- ▶ *Unconscious mind*: Our thought processes that are beyond our awareness and yet influence our behaviors.
- ▶ *Transference*: The therapeutic process in which clients relate to their analysts just as they did to their parents in early childhood.
- ▶ *Defense mechanisms*: Behaviors driven by the unconscious mind to help the individual to cope with anxiety. The end result is that they tend to deny or distort reality.

Psychodynamic

- ▶ *Psychosocial development*: Our personality develops throughout our life span as we seek to establish a balance between the perception we have of ourselves and the perception we have of our place in a social world.

Client-centered

- ▶ *Perception*: An individual's interpretation of his or her world based on the person's personality, temperament, and life experiences.
- ▶ *Genuineness or Congruence*: The therapist is real in that he or she openly and honestly expresses any inner feelings or attitudes being experienced.
- ▶ *Unconditional positive regard or Acceptance*: The therapist possesses a deep and genuine caring for the client as a person, recognizing that the client has a right to his or her own thoughts and feelings.
- ▶ *Empathy*: The therapist develops an accurate understanding of the client's subjective inner experiences or "private world".

Cognitive

- ▶ *Cognitive distortions*: Inaccurate interpretations of the world around us lead to faulty assumptions and misperceptions that result in dysfunctional emotions and behaviors.
- ▶ *Irrational beliefs*: Rigid demands of others and unrealistic blaming of ourselves that result in emotional disturbance.
- ▶ *Negative self-talk*: Self-defeating and self-critical thoughts that exaggerate the negative aspects of ourselves, our experiences, and our future.
- ▶ *Reality-based thinking*: The ability to dispute irrational and distorted thinking resulting in realistic interpretations of our experiences, followed by appropriate feelings and behaviors.
- ▶ *Didactic*: Therapy is seen as an educational process in which the therapist is the teacher and the client is the learner.
- ▶ *Directive*: The counselor provides suggestions and ideas to help clients to accomplish the changes they desire to make in their lives and relationships.
- ▶ *Collaborative*: The therapist and client work together to accomplish the client's goals.

Behavioral

- ▶ *Environment*: This includes everything and everyone outside of the individual—all external influences experienced by the individual.
- ▶ *Classical conditioning*: A neutral event occurs at the same time with a stimulus that rouses or triggers a specific behavior. When this happens repeatedly, eventually the neutral event alone will trigger the behavior. For example, when Uncle Andy comes to visit (neutral event) he always brings little Johnny his favorite candy (stimulus), so Johnny always runs out to meet Uncle Andy to get the candy. Eventually Johnny will run out to meet Uncle Andy even when he doesn't bring candy.



- ▶ *Operant conditioning:* When a specific behavior repeatedly results in a positive outcome the behavior is reinforced and will continue. When a specific behavior repeatedly results in a negative outcome the behavior is discouraged and will be extinguished.
- ▶ *Antecedent:* That which happens immediately before a specific behavior.
- ▶ *Consequence:* That which happens immediately following a specific behavior.
- ▶ *Positive reinforcement:* A rewarding consequence that gives the person something he or she wants.
- ▶ *Negative reinforcement:* A rewarding consequence that removes something that the person does not want.
- ▶ *Punishment:* An adverse or unwanted consequence that is the result of a specific behavior. This will stop that behavior, but will not train the person to perform another behavior.
- ▶ *Modeling:* One individual observes another individual's behavior and the consequences that follow. If the first individual desires the same consequences he or she will imitate the same behavior.

Family Systems

- ▶ *System:* A family provides a social framework in which each member interacts with the

other members. The result is that any behavior or change by one member of the family instantly creates a responding movement within the family as a whole. Similarly any movement within the family as a whole instantly affects the behavior of the individual member of the family.

- ▶ *Subsystem:* Within the social framework of the family are various social relationships that operate within themselves as well as within the family system. These include husband-wife, parent-child, sibling, etc..
- ▶ *Family of origin:* A person's mother, father, and siblings.
- ▶ *Genograms:* A chart of a multi-generational family history.
- ▶ *Focus client:* The family member that is originally identified by the family as "the one with the problem".
- ▶ *Dysfunctional:* The interactions within the family are such that they impair the members of the family from experiencing a healthy and appropriate relationship.

Adlerian

- ▶ *Psychological position:* The perception or sense of belonging and significance with which each member of the family views his or her place in the family system.
- ▶ *Family constellation:* The birth order of each

child in the family—firstborn, middle child, baby of the family, only child, etc..

- ▶ *Family atmosphere:* The way parents relate with each other results in the attitudes, behaviors, and relationships that are practiced by all members within the family system.
- ▶ *Goals of misbehavior:* All behavior is “purposive” in that it accomplishes the subconscious goals of the individual. These goals include (1) getting the parent’s attention, (2) seeking to gain power over the parent, (3) seeking revenge for real or perceived wrongs by the parent, or (4) assuming disability and passively doing nothing requested by the parent.
- ▶ *Logical consequence:* What would logically follow a child’s misbehavior is used to teach the child the consequences of his or her behavior. For example, a child continues to complain about the food prepared by the mother. Because of this display of disrespect and ingratitude, the child’s plate is put away and the child is removed from the table without any food until the next regularly scheduled meal.
- ▶ *Natural consequence:* What would naturally follow a child’s misbehavior is allowed to happen to teach the child the consequences of his or her behavior. For example, a child refuses to come in to eat at supper time, because he wants to keep on playing. When the child comes in a half-hour later and asks to eat because he is hungry, the mother says, “I understand why you are hungry now. You refused to come in for supper. You will have to wait for breakfast tomorrow morning.” [Hunger is a natural result of refusing to eat.]
- ▶ *Family dynamics:* The continual changes that occur in the interpersonal relationships between family members and in the way that they interact with each other and with the family as a whole.

Twelve Step

- ▶ *Self-help groups:* A group of individuals



sharing common problems meet together to support and encourage one another in their individual efforts to learn to overcome or cope with their problems. Usually a portion of the meeting is devoted to education and a portion is set aside for group members to share their experiences.

- ▶ *Higher power:* A generic term for “god” that allows the individual to trust in the “god” of his or her choosing.

Medical Model

- ▶ *Psychotropic medications:* Drugs which affect the mind, emotions, and behavior, such as mood stabilizers, antidepressants, and stimulants.

EMDR

- ▶ *Desensitization:* The reduction of an individual’s anxiety in reaction to a specific stimulus.
- ▶ *Neurophysiological:* The various parts of the brain, their distinct functions, and how they interact with one another to process information (input) and behavior responses (output).
- ▶ *Accelerated Information Processing:* Neurological activity stimulated by rapid eye movement resulting in reality-based information being processed by the brain to effectively dispute self-defeating thoughts and memories.

- *Adaptive*: Beneficial to the individual and/or relationship.
- *Neuro network*: The brain cell structure in which specific experiences and memories are stored. In a trauma situation it appears that such a brain cell structure is blocked or isolated from the messages of other cell structures that would allow the person to process the information in an adaptive manner.
- *Directed eye movements*: The therapist establishes a steady pace of eye movement along with a bi-directional movement of the eyes (e.g., side-to-side, up-down) for a determined duration of time.
- *Cognitive reprocessing*: Changing the individual self-defeating thoughts and memories about a specific trauma to thoughts that are reality-based.

Solution-Focused

- *Exceptions*: The situations, times, and circumstances in which a problem behavior does not occur.

Dialectical Behavioral Therapy (DBT)

- *Dialectical or dialectics*: This has two meanings in DBT. The first is that dialectics is the world view of this type of therapy. This means that each one thing is always viewed as a part of the whole universe. The second meaning is that dialectics refers to the treatment approach and strategies used by the DBT therapist to effect change. These strategies reflect dialogue and relationship. Dialogue is most often the inner dialogue as a client focuses on an issue and considers it in relationship to the wholeness or reality of that one issue as it exists in respect to the client's total life and experience.
- *Skills*: Training in individual and inter-relationship skills is vital to DBT. The client must learn not only self-regulation skills but also skills for influencing his or her environment. The client will also need to

learn when to regulate his or her feelings, emotions, and cognitions.

- *Core mindfulness*: Mindfulness is the act of focusing the mind in the present moment without judgment and without attachment to the moment. This allows the client to have an inner dialogue on the issue or behavior and view the issue or behavior in relationship to the whole of his or her existence. The DBT manuals stress that this is a secular exercise and no spiritual or religious convictions are necessary for it to succeed. Mindfulness and distress tolerance are a part of the acceptance skills of DBT.
- *Distress Tolerance*: These are skills that are taught to people who are experiencing crises or who are over whelmed. These skills are designed to help people solve immediate crises without making things worse. The person is helped to accept reality when he or she cannot change it and when it is not what he or she wants it to be.
- *Emotional Regulation*: These are de-escalation skills in DBT. The goal of these skills is not to get rid of emotions, but to reduce emotional suffering. Emotional regulation and interpersonal effectiveness are change skills in DBT.
- *Interpersonal Effectiveness*: These are people skills. The goal is to train clients to be effective in relating to others so that they can achieve their own goals without alienating the other person or losing their own self-respect.

WELS Committee on Mental Health Needs

Commission on Special Ministries
N16W23377 Stone Ridge Drive
Waukesha, Wisconsin 53188-1108
414-256-3241 • specialministries@wels.net
wels.net/special-ministries

Care To Plan For Called Worker Retirement



Establish a local Care Committee for Called Workers within your congregation to provide ongoing support and encouragement for called workers and their families as they plan for expenses in retirement. Whether or not you have a Care Committee, designate a person to focus on retirement planning for called workers.

1. The committee should familiarize itself with the following resources that are available to assist with retirement planning:

a. WELS Pension

welsbpo.net/retirement/pension/

- Does the called worker understand the program?
- Has the called worker used the benefit estimator?

b. The Shepherd Plan

welsbpo.net/retirement/shepherd-plan/

- Is the called worker already participating?
- Has the congregation considered establishing automatic enrollment and/or providing matching contributions?

c. WELS VEBA Health Insurance

welsbpo.net/health/

- Does the called worker understand health insurance options in retirement?

- Does the called worker have a health savings account that should be considered?

d. Social Security

ssa.gov

- Has the called worker used the benefit estimator?
- Has the called worker set up an online account to track earnings?

e. CCCW Resources

welsrc.net/cccw

- Has the called worker reviewed the online retirement planning materials?

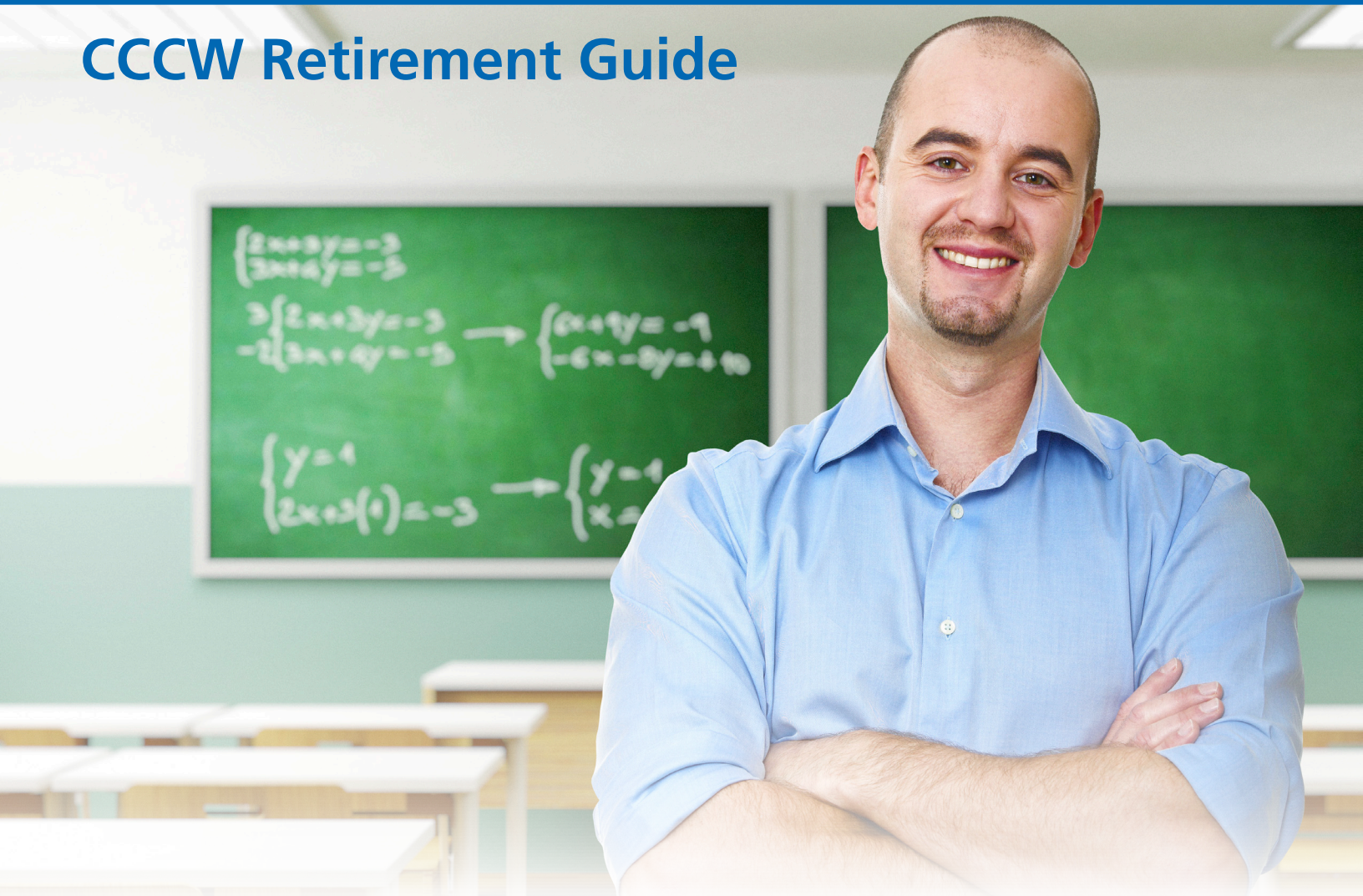
2. Meet with the called workers to review these resources and to encourage them to seek professional financial advice to coordinate a comprehensive plan.

3. Follow-up with the called worker on an annual basis to review updates and/or questions.

WELS Care Committee for Called Workers

Special Ministries
N16W23377 Stone Ridge Drive
Waukesha, Wisconsin 53188-1108
specialministries@wels.net

CCCW Retirement Guide



When a new graduate receives that first call it is understandable that planning for retirement is not at the top of the to-do list. The Care To Plan checklist and the additional information contained in this document can be used as a tool by the calling body to encourage their called workers to get an early start on retirement planning. It will also be helpful for those veteran workers who would like to begin or fine tune their retirement planning. Investing and financial planning in general can seem intimidating to some, and these materials are designed to simplify and streamline the process.

The following is an outline of topics that could have an impact on retirement planning. If there is a Care Committee for Called Workers (CCCW) in place, a committee member can go through the checklist with the worker. If there isn't a CCCW in place, a volunteer should become familiar with the materials and assist the worker with the

process. Most workers will be able to implement a plan with the resources available. However, in some cases it might be wise to work with a financial professional.

- a. WELS Pension – The synod pension is a good building block for a retirement plan. While it is not likely that a retiree will be able to live on this income alone, it is a good start. The WELS website should be used to calculate potential scenarios.
welsbpo.net/retirement/pension/
- b. Social Security – Social Security is similar to the pension because it may not be enough to live on by itself, yet it is another important building block in a retirement plan. Making a decision on when a worker and possibly a spouse should begin to draw payments is often difficult and complicated. You should use the website to view your

personal information and calculate possible benefits, but it is recommended that you seek the advice of a professional to help maximize benefits when making decisions.

ssa.gov

- c. **Saving and Investing** – The third building block for retirement income is the one that the worker has the most control over. The best advice in this area is to start as early as possible, no matter how small the amount. Calling bodies can encourage this by offering matching contributions or automatic enrollment. Workers would be more likely to make contributions if they knew that the congregation was also contributing. With automatic enrollment, the worker would automatically be enrolled in a 403b plan unless they choose to opt out. The Shepherd Plan is the WELS-sponsored 403b plan and offers a good choice of investment options, including target date funds that will automatically adjust the risk level as you get closer to retirement. All necessary information is available on the WELS website. It is certainly an option for called workers to work with another firm or financial professional. If this option is chosen, keep in mind that the Shepherd Plan offers tax advantages in retirement that may allow you to make tax-free withdrawals. If this is the case, it is possible to transfer funds into the Shepherd Plan at or even after retirement.

welsbpo.net/retirement/shepherd-plan/

- d. **Health Insurance** – WELS VEBA is the health insurance carrier for the synod. They offer several options with various features and deductibles. For an individual or family that normally does not have a lot of health-related expenses, it may be a good choice to use the Health Savings Account option. Unused funds in HSA accounts may be invested and could be used to pay for health care costs in retirement. Contributions and withdrawals are tax-free.

welsbpo.net/health/



- e. **Housing** – Workers may rent, buy a home, or live in housing provided by the congregation. While there are pros and cons to each of these, if housing is provided it would be wise for the worker to invest an amount equal to a house payment each month as they will not be building up any equity for the future.
- f. **Life Insurance** – Term insurance is quite cheap for young people, so the best advice would be to get started early.
- g. **College Savings** – There are several options for college savings as well. Education Savings Accounts, 529 plans, and UTMA or UGMA accounts have different features. Often a Roth IRA is a good choice because of the flexibility in funding the account and making tax-free withdrawals of contributions.
- h. **Trust/Estate Planning** – An estate planner or attorney would be helpful in this area. One thing to consider is a living trust, which allows your assets to pass to your beneficiaries without going through the probate process, saving time and money. A living trust would also contain a will.

WELS Care Committee for Called Workers

Special Ministries

N16W23377 Stone Ridge Drive

Waukesha, Wisconsin 53188-1108

specialministries@wels.net



WELS Foundation

Wisconsin Evangelical Lutheran Synod

Annual Report 2016

Helping people support ministry



Mission & vision

Placing memorial stones by the River Jordan (Joshua 4:4-9).

After the Israelites crossed the River Jordan to enter the Promised Land, they set up a stone memorial so that future generations would know the goodness of God. In the same way, WELS Foundation exists to help members whose gifts leave a monument of their faith that will be a blessing for many years to come.

Planned gifts provide funding for WELS congregations, schools, missions, and other affiliated ministries.



Organization overview

WELS Foundation exists to help God's people support gospel ministry through WELS. To carry out its mission WELS Foundation provides:

- knowledgeable planned giving support to WELS members through WELS Christian giving counselors and other WELS advancement representatives.
- various giving opportunities including charitable gift annuities, charitable remainder trusts, donor advised funds, and endowment administration.
- a website, **wels.net/foundation** with help and information about giving opportunities and options.

DISTRIBUTION TO SYNOD MINISTRIES

FY2014-FY2016

Over the last three years WELS Foundation has been privileged to administer and distribute \$14,127,432 in donor directed gifts to various WELS ministries.

72%

WELS NATIONAL MINISTRIES
\$10,147,406

9%

WELS AFFILIATED MINISTRIES
\$1,324,732


19%

WELS CONGREGATIONS
\$2,655,294

We thank the Lord for your generous gifts!

Dear friends in Christ, who enables us to excel in the grace of giving,

Unless you serve on a congregational finance or stewardship committee, it's probably been a while since you've pondered the apostle Paul's heartfelt counsel: "We administer (the offering) in order to honor the Lord himself and to show our eagerness to help. We want to avoid any criticism of the way we administer this liberal gift. For we are taking pains to do what is right, not only in the eyes of the Lord but also in the eyes of man" (2 Corinthians 8:19-21).



WELS Foundation's board and staff cherish these words of God. By the Spirit's power, we daily live them as we help our fellow Christians arrange gifts to Jesus for his gospel endeavors. We believe that you honored the Lord when you presented him with gifts through WELS Foundation. We intend to honor Jesus as we administer your generous offerings, doing what's right in the eyes of the Lord and in the eyes of man. Along the way, we trust that our heavenly Father will guide our service to you and him—all to Christ's glory and the salvation of precious souls.

As you review this report, join us in thanking God for the many “liberal

(generous) gifts” that our Lord prompted his people to arrange for the benefit of his kingdom. What wonderful blessings!

To learn more about the different ways you can directly impact our Savior's work through your gifts, please call us; visit our website, wels.net/foundation; or contact your local WELS Christian giving counselor. We look forward to serving you and the ministries that touch your heart!

Yours in Jesus,

REV. KURT LUENEBURG,

WELS Foundation President

MR. JIM HOLM,

Executive Director, WELS Foundation



Giving support

CONSULTING SERVICES

WELS Foundation provides planned giving support to WELS members through WELS Christian giving counselors who are specifically trained in both the spiritual and financial aspects of planned giving. The WELS Christian giving counselors coordinate planned giving efforts with other WELS advancement representatives, congregational planned giving committees, or directly with donors and their advisors. Find your local Christian giving counselor at wels.net/christiangivingcounselor.

EDUCATIONAL SEMINARS

WELS Foundation hosts monthly educational webinars. The monthly webinars include timely presentations on various planned giving topics such as Charitable Remainder Trust Essentials, Achieving Donor Goals with Gift Annuities, Working with Donors and Their Advisors, and Making the Right Choice between a Gift Annuity and a Charitable Remainder Trust.

The educational webinars are made available by WELS Foundation at no cost to WELS Christian giving counselors, advancement and development officers, and congregational planned giving committee leaders.

Contact WELS Foundation for recordings of past webinars or to participate in future sessions.

QUALIFIED CHARITABLE DISTRIBUTION

A qualified charitable distribution allows a donor who is 70.5 or older to give up to \$100,000 directly to WELS charities from an individual retirement account (IRA). The amount distributed will be excluded from income for federal income tax purposes. This may be an especially useful gifting strategy for those who do not itemize their income tax deductions. The IRA distribution must go directly to a qualified charity. You can choose to direct the distribution to WELS Foundation, which in turn will distribute the money to one or more WELS ministries you designate and provide you with the proper acknowledgement. Interested donors will want to contact their WELS Christian giving counselor to find out more.

A gift that pays income for life

CHARITABLE GIFT ANNUITIES

A charitable gift annuity (CGA) is a contract between a WELS member and WELS Foundation in which the member makes a gift of cash or securities in exchange for fixed annuity payments, generally for life. After the Lord calls him or her home, the remainder of the gift is distributed to the congregation or ministry as designated.

Income payments from a charitable gift annuity may begin immediately, be deferred to a specific date in the future, or be deferred until an unspecified date in the future.

The donor receives an immediate income tax charitable deduction, and in most instances a portion of the gift annuity payments will be a tax-free return of the original principal.

Examples of benefits of a \$10,000 charitable gift annuity:

AGE	PAY-OUT RATE*	TOTAL ANNUAL PAYMENTS	TAX-FREE PORTION	ALLOWABLE INCOME TAX CHARITABLE DEDUCTION
60	4.4%	\$440	\$301	\$2,749
65	4.7%	\$470	\$334	\$3,363
70	5.1%	\$510	\$377	\$4,002
75	5.8%	\$580	\$443	\$4,503
80	6.8%	\$680	\$536	\$4,965
85	7.8%	\$780	\$644	\$5,622
90	9.0%	\$900	\$761	\$6,269

**Rates and data as of September 1, 2016*

This information is not intended as legal advice. For legal and tax advice, WELS Foundation encourages you to consult an attorney or tax professional. The figures cited in the examples are for hypothetical purposes only and are subject to change. References to income tax include federal income tax only. Individual state income taxes may impact your results.

As of June 30, 2016, WELS Foundation administered 649 gift annuity contracts.

	2016	2015	2014
Opening Balance	\$ 9,751,245	\$ 9,950,074	\$ 9,445,928
Gifts Received	996,467	1,150,769	824,432
Net Investment Income (Loss)	(59,280)	6,952	969,217
Annuity Payments	(1,057,780)	(1,074,448)	(1,085,934)
Charitable Distributions	(277,204)	(282,102)	(203,569)
Ending Balance	\$ 9,353,448	\$ 9,751,245	\$ 9,950,074

A taxwise way of providing for children and church

CHARITABLE REMAINDER TRUSTS

A charitable remainder trust (CRT) is created when donors transfer cash, securities (stocks, bonds, mutual funds), or real estate into a charitable trust but keep a specified income interest—usually for their life or for a period of years for their children. When the trust ends

per the donor's designations, the property in the trust passes to their designated charitable beneficiaries, such as their church and/or synod.

As of June 30, 2016, WELS Foundation administered 164 charitable remainder trusts.

	2016	2015	2014
Opening Balance	\$ 32,326,183	\$ 31,836,659	\$ 27,062,436
Gifts Received	2,139,711	4,181,292	3,114,729
Net Investment Income (Loss)	(565,902)	(57,540)	3,934,105
Income Payments	(2,102,284)	(1,970,889)	(1,755,450)
Charitable Distributions	(1,361,926)	(1,663,339)	(519,161)
Ending Balance	\$ 30,435,782	\$ 32,326,183	\$ 31,836,659

A gift that creates a lasting legacy

DONOR ADVISED FUNDS

A donor advised fund (DAF) is a charitable giving vehicle wherein an individual, family, or corporation makes an irrevocable, tax-deductible contribution of cash, securities, or other property to WELS Foundation and at any time thereafter can recommend grant distributions to qualified WELS ministries. The fund can be established with

current gifts, deferred gifts (such as charitable gift annuities and charitable remainder trusts), and testamentary gifts (such as wills, revocable trusts, or beneficiary designations for life insurance policies or retirement accounts).

The WELS Foundation donor advised fund program provides an alternative to the private family foundation. WELS members can accomplish many of the same goals but with far less administrative work and expense.

As of June 30, 2016, WELS Foundation administered 48 donor advised funds.

	2016	2015	2014
Opening Balance	\$ 2,255,978	\$ 1,973,307	\$ 1,833,144
Gifts Received	527,218	1,032,728	426,333
Net Investment Income (Loss)	(44,801)	9,627	253,478
Charitable Distributions	(801,045)	(759,684)	(539,648)
Ending Balance	\$ 1,937,350	\$ 2,255,978	\$ 1,973,307

Ongoing, dependable support for ministry

WELS ENDOWMENT FUNDS

WELS MINISTERIAL EDUCATION

ENDOWMENT FUNDS provide direct and indirect financial assistance to students attending WELS ministerial education schools. Wisconsin Lutheran Seminary, Martin Luther College, Luther Preparatory School, and Michigan Lutheran Seminary each have a separate endowment to which gifts may be directed.

WELS MISSIONS ENDOWMENT FUNDS

support the continued proclamation of the gospel to more and more people in our nation and the world by WELS missions programs. Gifts can be made to the fund for the benefit of mission work carried out in North America or missions worldwide. Gifts of any amount can be added to the synodical WELS Endowment Funds.

WELS ORGANIZATIONS AND CHURCHES

WELS Foundation also manages endowment funds for individual congregations, schools, and organizations to benefit ministry locally.

As of June 30, 2016, WELS Foundation administered 289 endowment funds.

	2016	2015	2014
Opening Balance	\$ 23,756,822	\$ 20,882,225	\$ 17,964,912
Gifts Received	4,626,418	2,489,083	693,478
Net Investment Income (Loss)	1,143,610	272,549	2,835,024
Transfers In	42,123,563	797,481	-
Charitable Distributions	(1,185,078)	(684,516)	(611,189)
ENDING BALANCE	\$ 70,465,335	\$ 23,756,822	\$ 20,882,225



Financial summary

Summary financial information for the fiscal years ending June 30, 2016, 2015, and 2014.

	AS OF JUNE 30, 2016	AS OF JUNE 30, 2015	AS OF JUNE 30, 2014
ASSETS			
Investments, cash, and cash equivalents	\$ 128,673,828	\$ 85,801,763	\$ 85,758,546
Property held for sale, life insurance, bequest, and other receivables	2,946,453	3,083,882	3,319,167
Total Assets	\$ 131,620,281	\$ 88,885,645	\$ 89,077,713
LIABILITIES AND NET ASSETS			
Accounts payable and accrued expenses	\$ 71,990	\$ 68,339	\$ 137,420
Gift annuities and trusts payable	24,554,333	28,623,568	26,956,280
Liabilities to outside beneficiaries	11,214,000	8,328,993	8,385,921
Investments held for WELS and schools	43,772,026	-	-
Net assets and funds held for WELS and WELS subsidiaries	52,007,932	51,864,745	53,598,092
Total Liabilities and Net Assets	\$ 131,620,281	\$ 88,885,645	\$ 89,077,713
SUPPORT AND REVENUES			
Gifts, memorials, and bequests	\$ 2,057,831	\$ 4,161,472	\$ 2,259,478
Net Investment and rental income	2,471,444	439,107	10,823,079
Trustee and administrator fees	645,756	618,211	571,645
Decrease in split-interest gift agreements	973,592	(701,757)	(3,355,516)
Total Support and Revenue	\$ 6,148,623	4,517,033	10,298,686
DISTRIBUTIONS AND EXPENSES			
Administrative expenses	630,331	\$ 650,944	\$ 627,558
Program expenses	641,520	625,750	646,087
Distributions to WELS and WELS subsidiaries	4,733,585	4,973,686	3,701,823
Total Distributions and Expenses	\$ 6,005,436	\$ 6,250,380	\$ 4,975,468
CHANGE IN NET ASSETS	143,187	(1,733,347)	5,323,218
NET ASSETS, BEGINNING OF YEAR	51,864,745	53,598,092	48,274,874
NET ASSETS, END OF YEAR	\$ 52,007,932	\$ 51,864,745	\$ 53,598,092

A person is seen from behind, sitting in a white canoe on a body of water. The person is holding a paddle. The scene is bathed in the warm, golden light of a sunset or sunrise, with the sun low on the horizon, creating a strong lens flare and reflecting off the water's surface. The water is dark with some ripples and reflections of the light.

Governing body

WELS Foundation was established in February 1965 to receive and administer funds for religious, charitable, and educational purposes consistent with the principles of the Wisconsin Evangelical Lutheran Synod (WELS). It continues to operate today as a subsidiary corporation of WELS.

The services of WELS Foundation are managed by a volunteer board of directors, more than half of whom are laymen representing financial, investment, trust or legal backgrounds. All directors are dedicated communicant members of WELS congregations; they know the grace of our Lord Jesus Christ and want to help their fellow believers honor our Savior with their gifts so more people come to know God's salvation. (Directors are elected to four-year terms by the WELS Synodical Council.)



Board members

JAMES BRENN, *chairman*

term expires June 30, 2018
(South Atlantic District)

MARK SCHULZ, *vice-chairman*

term expires June 30, 2018
(Western Wisconsin District)

TIMOTHY BOERNEKE, *secretary*

term expires June 30, 2019
(Western Wisconsin District)

PAUL BEITLICH, *director*

term expires June 30, 2017
(South Atlantic District)

NATHAN BIRKHOLZ, *director*

term expires June 30, 2020
(Minnesota District)

REV. KURT LUENEBURG, *director*

by virtue of his position as director of
WELS Ministry of Christian Giving

MARK MAURICE, *director*

term expires June 30, 2019
(Southeastern Wisconsin District)

REV. PAUL PRANGE, *director*

term expires June 30, 2019
(Southeastern Wisconsin District)

KURT SAMES, *director*

term expires June 30, 2019
(Minnesota District)



WELS Foundation

Wisconsin Evangelical Lutheran Synod

N16W23377 Stone Ridge Drive • Waukesha, WI 53188-1108

800-752-8940 • wels.net/foundation

Federal Tax ID 39-6084446



WISCONSIN LUTHERAN COLLEGE

PREPARING STUDENTS FOR LIVES OF CHRISTIAN LEADERSHIP

SUMMER 2017 CONFERENCE REPORT

Greetings from Wisconsin Lutheran College! I pray that this finds you well and enjoying spiritual enrichment and fellowship with your partners in ministry. I thank our gracious Lord for your faithful service as together we share the Gospel with the next generation.

On May 20, we recognized the Class of 2017 at Commencement. Our undergraduates came to us from 18 states and represented 28 majors. We were honored to have **Rev. David Rutschow** as our keynote speaker at the service, and we presented Pastor Rutschow with WLC's Pro Gloria Dei Award for his life of distinguished service to God and His people.

Many graduates, such as **Austin Wagenknecht**, took full advantage of all WLC has to offer. Austin majored in both music and mathematics and was part of our Honors Program. In March, he presented the short opera "The Perfect Wife" in our Raabe Theatre as his Honors capstone project. Because of his leadership overseeing WLC's Student Employment program, Austin was named Midwest Association of Student Employment Administrators "Student Employee of the Year" for Wisconsin. Learn more about Austin on the next page of this report.

Graduate **Hannah Bartels**, a biology major from La Crosse, Wisconsin, earned the 2017 Impact Award from WLC, which is given to a student who has made a difference on our campus. Hannah served as president of the Student Senate, sang in the Wisconsin Lutheran Choir, tutored Sport and Exercise Science students, conducted genetic research with maize, and organized a volleyball tournament to benefit military veterans.

During the 2016-2017 academic year, I was privileged to witness many shining examples of our students' academic achievements and servant leadership. I am grateful that we are able to send our new graduates out to make an impact in a world in desperate need of Christian leaders. Please keep them in your prayers.

May God continue to bless you and your service in His Kingdom.

Dr. Daniel W. Johnson
President, Wisconsin Lutheran College



Donna Stollenwerk, Assistant Director of Financial Aid, with Wisconsin Student Employee of the Year **Austin Wagenknecht '17**



Rev. David Rutschow, former president of the Southeastern Wisconsin District, spoke at WLC's Commencement service in the Time of Grace Center. He also received the college's Pro Gloria Dei Award.



Dr. Daniel W. Johnson, President of WLC, with 2017 Impact Award Winner **Hannah Bartels '17**

THE VALUE OF A WISCONSIN LUTHERAN COLLEGE EDUCATION

Wisconsin Lutheran College generously invests in making a Christian college experience affordable because we know the positive impact WLC graduates are making around the world.

WLC is ranked as **one of the most affordable private colleges in the nation**. For 2016-2017, *MONEY* Magazine rates WLC 13th for affordability among private institutions in the country and first among private institutions in Wisconsin. WLC is the only private school in Wisconsin to be ranked within the top 25.

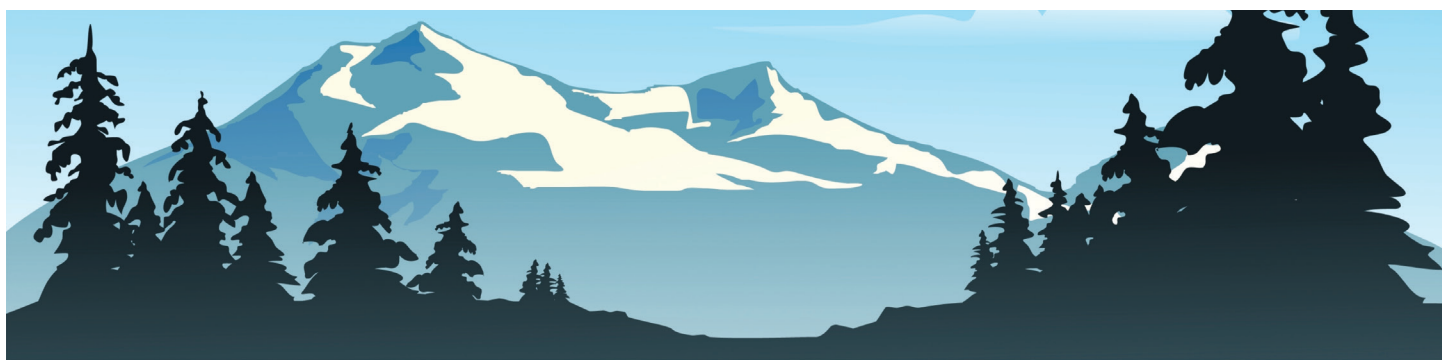
PARTNERS IN CHRISTIAN EDUCATION SCHOLARSHIP

A \$2,000 renewable scholarship will be given to students who graduate from a Christian high school and enroll at WLC.

MERIT AWARDS

Merit Awards for qualifying freshmen enrolling in Fall 2017 will range from \$11,000 to \$15,000 per year, based on GPA and ACT or SAT scores, for a lifetime value of \$44,000 to \$60,000. Learn more at wlc.edu/scholarships.

WISCONSIN LUTHERAN COLLEGE



2017 Washington and Alaska Concert Tour

The Wisconsin Lutheran Choir and Chamber Choir, under the direction of Dr. James A. Nowack, performed six concerts in Washington and Alaska May 23-31. The concert program featured sacred and secular choral works spanning several periods and genres. An homage to the Lutheran Reformation musical heritage included J.S. Bach's motet *Jesus My Great Pleasure*, Heinrich Schütz's *Also Hat Gott die Welt Geliebt*, and Martin Luther's treasured hymn *A Mighty Fortress is Our God*. Two 2017 graduates who were members of the Wisconsin Lutheran Choir reflected on their choral experiences at Wisconsin Lutheran College:



Austin Wagenknecht '17
Music/Mathematics
Yorba Linda, CA

"The Wisconsin Lutheran Choir has been an unexpected, tremendous blessing in my life. I came to Wisconsin Lutheran College with hardly any singing experience. Being a viola player, however, offered me a concert experience I will never forget. As I sat on stage with the Christmas Festival Orchestra in 2013, I could not see the choir due to my front-and-center position. I could only listen as the lyricism of Eric Whitacre's *Alleluia* swept over me like waves. The next year I auditioned for and joined the choir. Since I plan to continue studying music in graduate school, I value what I have learned from Dr. Nowack and the Wisconsin Lutheran Choir. More importantly, nothing in the world is better than uniting with others to create Christian music and experience a foretaste of the heavenly chorus. I love being part of a family dedicated to a mission: the performance of excellent music to God's glory." – Austin

"Four years ago, I contemplated where I wanted to go for a nursing degree. Wisconsin Lutheran College had always been on my radar, but the decision was finally made when I learned of WLC's Christ-centered college choir. The Wisconsin Lutheran Choir has been a solace and safe-haven for me through my most challenging times. Through the years, choir membership has further taught me about the beauty and power found in singing God's Word. At every rehearsal since my freshman year, I would step into the rehearsal hall, and I knew that for the next hour my time would be devoted to prayer, praise, and conversation with my heavenly Father. The Wisconsin Lutheran Choir has been an astounding blessing in my life and I will never forget it! Music is powerful, but when woven together with God's Word, its beauty is unfathomable." – Sarah



Sarah Burk '17
Nursing
North Mankato, MN

ABOUT WISCONSIN LUTHERAN COLLEGE



Wisconsin Lutheran College is a nationally ranked, independent Christian college in Milwaukee that serves nearly 1,200 traditional undergraduate, adult, and graduate students through on-campus and online programming. The college, which prepares students for lives of Christian leadership, is recognized for its academic excellence and superior student experience.

Visit wlc.edu/admissions to explore the options offered by WLC. To subscribe to the college's newsletters or follow the college on social media, visit wlc.edu/connect.



The Wartburg Project

District Reports

June 2017

The Wartburg Project is a group of WELS and ELS pastors, professors, teachers, and laypeople who are working together to pass our evangelical heritage from age to age by producing a new translation of the Bible called the *Evangelical Heritage Version* ® or *EHV* ®.

Progress Report

- The editing of Isaiah, Jeremiah, Lamentations, Ezekiel, and Daniel is nearly complete.
- Northwestern Publishing House has print set-ups ready for all the historical and poetic books of the Old Testament.
- Some WELS, ELS, and LCMS congregations are using and evaluating the lessons for the 2016-2017 church year. They can be downloaded from the *Lectionaries* link on our website.
 - Permission to use the passion history and lections free of charge includes any congregational use including projection on a screen, broadcasts, and posting bulletins and sermons online.
 - As we complete the prophetic books, the Old Testament readings in this year's lectionaries will be updated to their final form. The lectionaries for 2017-2018 and 2018-2019 should be the final form from the start.

2017 Preview Edition

NPH is now taking orders for the 2017 preview edition of the New Testament and Psalms. There are discounts for volume orders

Derived Works

NPH's files of the New Testament and Psalms are being converted to the necessary e-pub file formats to be used in various electronic online applications. When this is done, we can finishing licensing arrangements and begin production with the various publishers who are interested in using the EHV. We have had contacts with about eight authors or publishers concerning various works that will use or post the EHV.

Authors who wish to use the EHV in their works should consult the project's May report.

Study Documents

These documents can be downloaded from our web site.

- 1) *Getting Ready For EHV 2017*. This 30-page booklet contains four studies that introduce EHV 2017.
 - a. Why should I try the EHV?
 - b. What were the greatest difficulties encountered in producing the EHV?
 - c. What are some of the features that distinguish the EHV from other translations?
 - d. Becoming accustomed to a new translation

- 2) *Key Passages for a Doctrinal Evaluation of Bible Translations*: A comparison of key doctrinal passages on the basis of more than a dozen translations. This is a 30-page technical study that makes use of the Hebrew and Greek texts.
- 3) A similar study: *Principles of Bible Study Applied to Prophecy*

Coming Projects

By late fall, we should be working on a format, staff, and finances for a Wartburg Lutheran Study Bible.

WEBSITE See our website (wartburgproject.org) for more information relating to the EHV. See FAQ #15 on the name EHV. A paper explaining our name is posted in the "Library" section.

Sign up on the "Contact" page to receive free e-reports. Like us on Facebook to receive the latest updates posted there. (The purpose of our Facebook posting is not debate, but we've been able to share information with many people very quickly that way (sometimes more than 10,000).

We continue to be a "purely positive" effort, avoiding debates and controversy. We are just quietly trying our best to translate the Bible "to spread its light from age to age." So far, so good! God has richly blessed us. To God be the glory and praise for all of his blessings!



Institutional Ministries

*Sharing hope with those who need it most...
for 115 years!*

PASTOR'S CONFERENCE REPORT

April, 2017

Ministry Insights

""After Bible class today, one of my guys privately shared with me his concern about losing his faith. "What if I harden my heart like Pharaoh, or I cause God's Spirit to depart from me like King Saul." I encouraged him to stop focusing on what he might do, and stay focused on what God has already done for him in Christ. "Focus on that 'inseparable' love that God has for you in Christ," I encouraged, "and remember the Good Shepherd's promise to you: 'My sheep listen to my voice; I know them, and they follow me. I give them eternal life, and they shall never perish; no one can snatch them out of my hand/'" What a privilege it is to share the hope of Jesus Christ when people need it the most! Chaplain Radsek "

"I met a young man in jail who was sure that he had committed "the unforgivable sin" and was therefore eternally lost before God. He told me about his sins and was surprised to find out that Jesus had atoned for them all. We reviewed 1 John 1:7 "The Blood of Jesus, his Son, purifies us from all sin," and I pointed out that in Jesus, there is free and complete forgiveness of sins, peace with God, and friendship. "Wow", he said, "I now feel at peace." He went away at peace with God and with himself. Chaplain K. Wenzel "As I introduced myself to the woman lying in the hospital bed, her eyes began to fill with tears and I wondered what I had stepped into. I then said her name, and instantly realized I was in the wrong room. This was not the person I was supposed to be seeing. I apologized, and was almost ready to leave the room when I saw the tears continue to well up in her eyes. 'Would it be ok if I stayed and we talked a little?' She nodded yes, her friend left the room, and I pulled up a chair. Before I had settled into the chair, she blurted out, 'I just don't know if there is a God in heaven.' God did it again, he put me where I needed to be." Chaplain M. Wenzel

Did you notice the similarity of those chaplains' stories? Satan, the careful historian of our sins, will constantly look for ways to trap our souls. It may be through the misuse of law from a misguided ministry. It may be through guilt, like Judas. But the solution is always the Gospel and the freedom the Spirit gives there. In the parish or an institution, we are partners proclaiming peace.

For more *Ministry Insights*, visit our website and "like us" on Facebook.

What We Can Do Better Together

- Be a clearing house to support those institutionalized in any way. Please notify us when you have someone institutionalized. We are happy to help serve that soul, whether personally or through our network of volunteers.
- Serve both inside and outside of prison. The rules of the State of WI don't allow a chaplain who serves an inmate to have any further contact upon the inmate's release. Our office provides the link so that ongoing care is given.
- Fill your pulpit and/or BC, giving you a breather, while teaching the story of Institutional Ministries.
- Support the expense of serving the institutionalized. Many falsely assume that synodical funds supplement this budget. Support comes solely from hearts that love this ministry. outside of synodical support.
- Broaden our coverage while helping pastors with need. Your dollars don't just serve our called chaplains. Some of you are our volunteers. Thank you for helping us extend our reach to more souls! Thank you, sister churches, for helping in that effort.
- Do outreach. If you haven't already done so, please note our new website address: www.IM.Life and on Facebook, www.facebook.com/InstitutionalMinistries

Celebrating 115 years of Partnership!

Thank you for helping us celebrate this milestone in our history and for helping the institutionalized learn about the hope that is ours in Jesus Christ. As we move into our 116th year in June, we thank God for the privilege of being His partner in this ministry, and for all the ministry partners he has given to us.

Connect with our online presence— www.IM.Life Friend us on Facebook

God's richest blessings to you, your family, your congregation and the Lord's ministry!

HEALING & HELPING

MINISTRY UPDATE—SPRING/SUMMER 2017

This update focuses on the services we provide throughout the country and the world

OUR HEALING & HELPING MINISTRIES

Our ministry is multi-faceted.
• counseling • home care • senior services



PASTOR MATTEK'S PREACHING SCHEDULE

6/4	Peace Wautoma, WI
6/11	St. John Markesan, WI
6/25	Christ the Lord Clearwater, FL
7/9	Trinity Belle Plaine, MN
7/23	Holy Cross Oklahoma City, OK
7/30	Bethany Appleton, WI
8/6	St Matthew Port Washington, WI
8/13	Messiah Olympia, WA
8/20	Mighty Fortress Hiram, GA

We are sharing our blessings!

Each year as I crisscross the United States and visit WELS/ELS congregations, I have the awesome opportunity to share the blessings our ministry has experienced. At each congregation, I talk about the compassionate work that we do each day: counseling those who are hurting, and caring for seniors as they age.

If I have ever preached and presented at your congregation, thank you. Thank you for the opportunity to share more about our healing and helping ministries.

If I haven't visited your church, I would love to! Please contact me at jmattek@wlcfs.org or **414.254.3916** if you would like me to preach and conduct Bible study at your congregation.

I thank God for his blessings, which have sustained this ministry for over 50 years. It is my prayer that God showers his blessings on us for years to come, so we are able to continue our work of healing and helping.

May God bless you and all those you serve!

Please see the back for a map and a list of our services.



262.345.5530 • 888.685.9522 www.ChristianFamilySolutions.org
W175 N11120 Stonewood Drive • Germantown, WI 53022

 CHRISTIAN FAMILY
SOLUTIONS

WISCONSIN LUTHERAN CHILD & FAMILY SERVICE, INC.

SERVICES OFFERED AT WLCFS-CHRISTIAN FAMILY SOLUTIONS

Counseling

Counseling Clinics—Counseling services for all ages in our community clinics and for students at our grade school, high school, and college clinics.

Video Counseling (Telehealth)—Counseling via secure video in states where we have licensed counselors.

Member Assistance Program (MAP)—A customized way for churches, schools, and organizations to provide counseling services for their members (in person at our clinics or via secure video from anywhere).

Intensive Outpatient Programs

Counseling services are available when a higher level of care is needed.

Dual-Diagnosis Programs—For those who struggle with addiction coupled with mental health issues.

Mindfulness-Based Programs—For those who struggle with depression, anxiety, trauma, and other mental health issues.

Our Intensive Outpatient Programs are unique in that they include a faith-based component to recovery, drawing on the strength found in God's Word.

Child & Adolescent Day Treatment Program

Many urban students struggle with undiagnosed mental health and behavioral issues, which can prevent them from learning and functioning in the classroom.

Students in our program work with our team of professional staff for 3 hours per day, 5 days per week. The goal is to help students work through their issues so they can return to the classroom and begin to thrive academically, socially, and spiritually. *Our goal is to replicate this program in other urban schools.*

Home Care

Our compassionate and experienced caregivers provide individuals with personal care and assistance in their homes to help make their lives easier, while maintaining the highest level of independence.

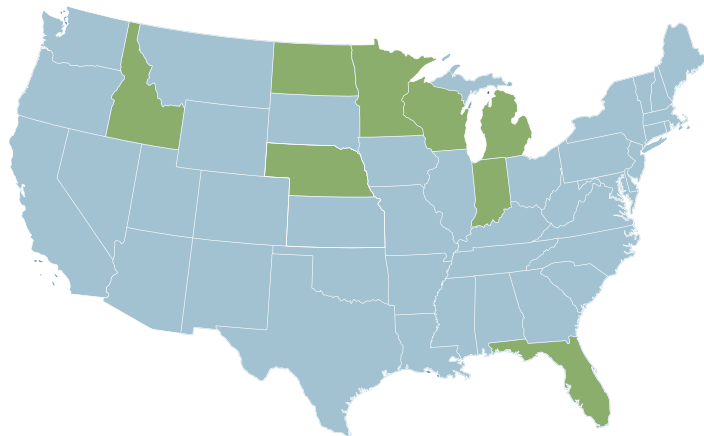
Senior Services

Christian Family Solutions is blessed to have two senior living communities:

The Gardens of Hartford—assisted living in Hartford, WI

Wisconsin Lutheran Living Center—assisted living in Milwaukee, WI

OUR SERVICES ARE OFFERED IN THE UNITED STATES AND WORLDWIDE!



- 41 Christian counseling clinics in 6 states (WI, MN, MI, FL, ID, NE)

- 15 Community Clinics

- 16 Urban School Clinics

- 8 High School Clinics

- 2 College Clinics

- Video counseling via telehealth in 8 states (WI, MN, MI, FL, IN, ND, ID, & NE)

- Worldwide counseling through our Member Assistance Program

- Assisted Living & Home Care services in Wisconsin

TLHA Quarterly

Summer 2017

Celebrating “where the care of the soul is the soul of care”

We are constantly inspired by our team members and volunteers, whose faithful service and passion for our ministry spread Christ’s love. At our annual board retreat in May, we celebrated nine of our longest-tenured team members for their years of service — 190 years among them! — and recognized four volunteers for sharing Jesus with others through our “Care of the Soul” award.

“Like us on Facebook to see more photos and keep up with the latest news.

Pictured: “Care of the Soul” award winners, Kathy and Jo Elle Augustine, with Michael Klatt (TLHA CEO) and Arvid Schwartz (TLHA board chair).



Brides’ grandma watches wedding live



Top: Valeria watches the wedding streaming live on the Internet in the company of family friend Lavonne Bratsch at Kingsway Retirement Living. Above: Kingsway team members purchased a special corsage for the grandma of the bride.

Valeria Schultz lives in memory care at Kingsway Retirement Living in Belle Plaine, Minn. and couldn’t fly to Texas for her granddaughter Jamie’s spring wedding. But with a little help from technology, it was just like she was there. Valeria dressed up, had her makeup done and wore a corsage for the Friday evening ceremony, which she watched on a live stream from 1,000 miles away.

It’s Never 2 Late (iN2L) technology made it possible. iN2L includes mobile kiosks with large monitors, as well as software with thousands of activities to engage older adults.

“We were even able to download the program for the wedding. It was a really interactive experience,” said Sharon Blume, Director of Health Technology Services at Kingsway. **“Rather than just turning on the TV, we looked for ways to make Valeria really feel like the grandmother of the bride.”**

“She was so happy for two days after, still talking about the wedding. And that’s very rare. Usually my mom doesn’t remember anything for more than 3 or 4 minutes,” said Joyce Lendt, one of Valeria’s daughters and aunt to the bride.

Kingsway Retirement Living is a vibrant community. For more information or to schedule a tour, call (952) 873-5900 or email info@tlha.org.



Michael R. Klatt, President and CEO
(952) 873-4750 | mklatt@tlha.org

THE LUTHERAN HOME
ASSOCIATION

www.tlha.org



Hope residence welcome new wheels!

Many thanks! Hope Residence, a disability housing community in Belle Plaine, Minn., welcomed a new handicapped-accessible van. A special thank you to all the friends, families and team members of The Lutheran Home Association who made this possible. Because of you, our residents will remain on the go— making safe journeys to all the special places they like to visit.

Keep tabs on Hope residents' trips and activities by liking "TLHA Belle Plaine Campus" on Facebook.



Ridgeview Belle Plaine Clinic opens June 5

Congratulations to our partner Ridgeview Medical Center as it announces the grand opening of its clinic in Belle Plaine, Minn. on June 5! The clinic is adjacent to KingsPath Senior Living, our newest community. Both are part of the Ridgeview Health Campus in Belle Plaine. KingsPath is scheduled to welcome residents October 2017 and leases are now available.

You can get a sneak peek at KingsPath by reserving a spot on our "dusty shoes" tour this summer. Contact Barb or Haley at (952) 873-4760 or info@tlha.org.



Honoring long-time JCM consultants

In December, two long-time Jesus Cares Ministries team members, Bill Truebenbach and Julie Luetke, will retire. **Generous ministry friends have given \$35,000 for a matching challenge! Every dollar donated will be matched \$0.50.** In the spirit of 2 Corinthians 9:13 and as a thank you to God for his grace show on the labor of these dedicated servants, we are asking you to consider a thank you gift to help carry on the work of JCM. We have created a "Bill Truebenbach and Julie Luetke JCM Endowment Fund" to provide a lasting and meaningful giving opportunity who want to remember Bill and Julie while providing gifts to grow JCM.

Donate online at www.tlha.org/donate or call (952) 873-4744.

OUR COMMUNITIES AND PROGRAMS

Boessling Village Apartments,
Belle Plaine, MN

Faith Residence, Belle Plaine, MN

Heritage Homes, Watertown, WI

Highland Regency House,
New Ulm, MN

Hope Residence, Belle Plaine, MN

Jesus Cares Ministries (JCM),
Belle Plaine, MN

KingsPath Senior Living,
Belle Plaine, MN

Kingsway of Beverly Hills,
Beverly Hills, FL

Kingsway Retirement Living,
Belle Plaine, MN

St. Michael's Assisted Living,
Fountain City, WI

The Lutheran Home: Belle Plaine,
Belle Plaine, MN

The Lutheran Home: Cedar Haven,
Mankato, MN

Wellhaven Senior Living,
River Falls, WI

OUR BOARD MEMBERS

Rev. Dr. Bruce Becker, Rev. Michael Berg, Matt Burow, Rev. Elroy V. Conradt, Jeff Davis, Lowell Hoffman (vice chair), Rev. Henry T. Koch, Wayne Larson, Bill Meier, Joel Meyer, David Oldenburg, Rev. Matthew C. Rauh (secretary), Tim Schuth (treasurer), Mark Schwan, Arvid Schwartz (chairman), Roger Toomey



THE LUTHERAN HOME
ASSOCIATION

I Am a Pioneer.

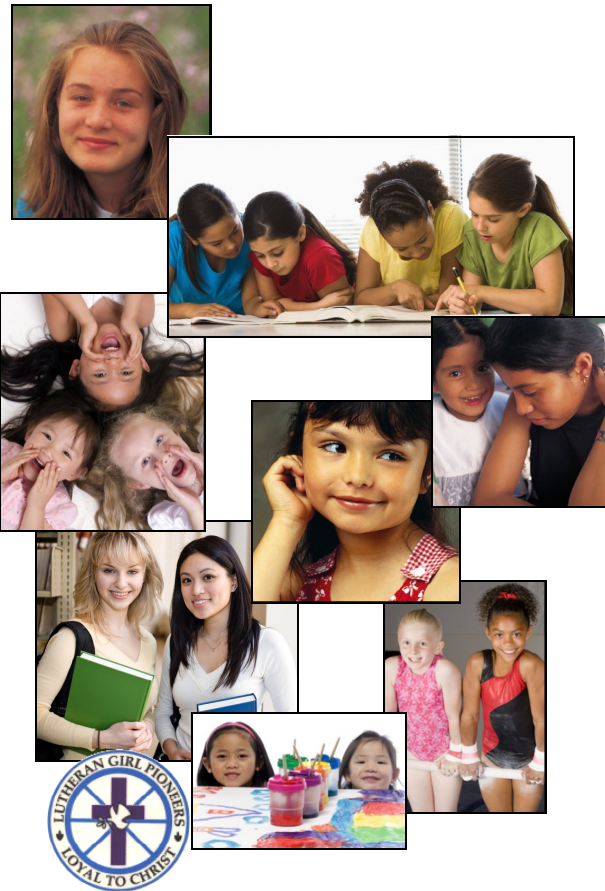
Who is a Girl Pioneer?

We are dancers & writers. We are teens & first graders. We live with our parents & with our grandparents. We go to Lutheran Day Schools & to public schools. We love horses & the theater. We study & we play. We are campers & bakers. We live in big cities & rural farm communities. We play soccer & sing in choir. We are best friends & sisters.

We are Christians who love to learn about our Savior & love to share Him.

We are Girl Pioneers.

Loyal to Christ



For more information about the Lutheran Girl Pioneers, please contact:

Lutheran Girl Pioneers
Christine Bohn, Executive Director
W10376 Buttercup Lane
Wautoma, WI 54982
608-781-5232
girpioneers@gmail.com

Why Should My Congregation Have a Lutheran Girl Pioneers Caravan?

Lutheran Girl Pioneers (LGP) provides opportunities for our girls, ages Kindergarten through high school, to discover and develop interests in leadership, personal awareness, evangelism, nature, skills for independent living and so much more! The benefits girls receive from LGP go beyond the fun, fellowship and learning and extend to their living a Christ-centered life within their family, church, school and community.

The Lutheran Girl Pioneer program is available to all girls of WELS or ELS congregations. LGP strives to inspire our girls to realize the joy of a Christ-centered life, living the LGP motto: "Loyal to Christ."

Starting a caravan is easy– give a call to the National Office and talk with Christine. She'll walk you through everything that needs to be done.

Lutheran Girl Pioneers will be a blessing not only for the girls you will serve, but also for the leaders and other adults involved. Through planning and executing each meeting, the leaders are in the Word. Some congregations also use Lutheran Girl Pioneers as an outreach tool, inviting the community to join their group, which begins with the girls themselves, but also leads families to your congregation.

There are "levels" within the LGP program: Sunbeams are Kindergarteners through second graders; Travelers are third and fourth graders; Trailblazers are fifth and sixth graders; Homesteaders are seventh and eighth graders; Spinners are girls who have been confirmed; Junior Leaders are high school aged girls ready to help lead. Girls earn charms for a bracelet when they complete each level and when they complete Special Achievements.

We would love to share with you more information about this vital program! It's through the love of our Savior that we serve and we want to serve your congregation, too! Please don't hesitate to contact the National Office with any questions you may have or to request more information.

**Lutheran Girl Pioneers, W10376 Buttercup Lane, Wautoma, WI 54982
608-781-5232 girpioneers@gmail.com www.lgp.org**

I Am a Pioneer.

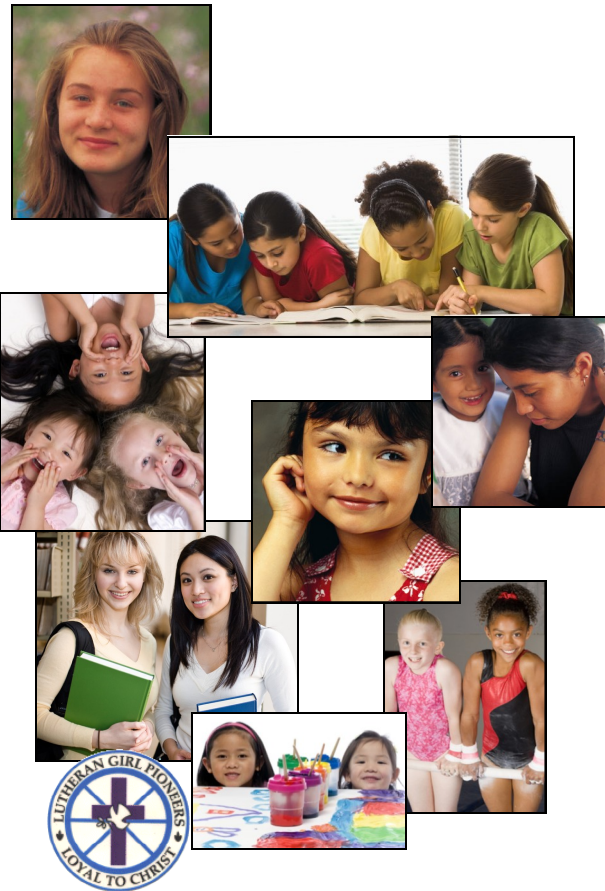
Who is a Girl Pioneer?

We are dancers & writers. We are teens & first graders. We live with our parents & with our grandparents. We go to Lutheran Day Schools & to public schools. We love horses & the theater. We study & we play. We are campers & bakers. We live in big cities & rural farm communities. We play soccer & sing in choir. We are best friends & sisters.

We are Christians who love to learn about our Savior & love to share Him.

We are Girl Pioneers.

Loyal to Christ



For more information about the Lutheran Girl Pioneers, please contact:

Lutheran Girl Pioneers
Christine Bohn, Executive Director
W10376 Buttercup Lane
Wautoma, WI 54982
608-781-5232
girpioneers@gmail.com

Why Should My Congregation Have a Lutheran Girl Pioneers Caravan?

Lutheran Girl Pioneers (LGP) provides opportunities for our girls, ages Kindergarten through high school, to discover and develop interests in leadership, personal awareness, evangelism, nature, skills for independent living and so much more! The benefits girls receive from LGP go beyond the fun, fellowship and learning and extend to their living a Christ-centered life within their family, church, school and community.

The Lutheran Girl Pioneer program is available to all girls of WELS or ELS congregations. LGP strives to inspire our girls to realize the joy of a Christ-centered life, living the LGP motto: "Loyal to Christ."

Starting a caravan is easy– give a call to the National Office and talk with Christine. She'll walk you through everything that needs to be done.

Lutheran Girl Pioneers will be a blessing not only for the girls you will serve, but also for the leaders and other adults involved. Through planning and executing each meeting, the leaders are in the Word. Some congregations also use Lutheran Girl Pioneers as an outreach tool, inviting the community to join their group, which begins with the girls themselves, but also leads families to your congregation.

There are "levels" within the LGP program: Sunbeams are Kindergarteners through second graders; Travelers are third and fourth graders; Trailblazers are fifth and sixth graders; Homesteaders are seventh and eighth graders; Spinners are girls who have been confirmed; Junior Leaders are high school aged girls ready to help lead. Girls earn charms for a bracelet when they complete each level and when they complete Special Achievements.

We would love to share with you more information about this vital program! It's through the love of our Savior that we serve and we want to serve your congregation, too! Please don't hesitate to contact the National Office with any questions you may have or to request more information.

**Lutheran Girl Pioneers, W10376 Buttercup Lane, Wautoma, WI 54982
608-781-5232 girpioneers@gmail.com www.lgp.org**



The 46th Annual PASTOR / TEACHER / STAFF MINISTER Golf Tournament
Edgewood Oaks Golf Course, West of 164 on Hwy L in Big Bend, WI

MONDAY, AUGUST 7, 2017 – Shotgun Start at 8am

The SEWER OPEN (*SEWER = South Eastern Wisconsin Educators and Reverends*) has been held as an annual outing for fun & fellowship. The tradition continues this year on **MONDAY, AUGUST 7, 2017**. Clear your calendars! **Shotgun Start at 8:00am on the OAKS COURSE**! Food and drink can be purchased at the course.

Golfers will be placed into the following 6 flights based on the average score that you indicate on the registration form. Winners of all flights from the previous year are automatically moved up one flight.

- Pro Flight
- Champion Flight
- 1st Flight
- 2nd Flight
- 3rd Flight
- Senior Flight

If you are 65 or older, you may play in the Senior Flight and tee off from the Gold Tees. Otherwise, if you choose to play in one of the other flights, you will tee off from the white tees with everybody else.

Be at the course no later than 7:30am. Before your round, enjoy a putting contest at the practice green. After your round, stay for fellowship and prizes at the Edgewood Golf Course.

**Please return your
registration &
payment of \$36.00 to:**

Bob Garbe 4845 S. Racine Avenue New Berlin, WI 53146	Home: 262-679-0856 Cell: 414-732-9264 Email: rgarbe1@wi.rr.com
--	--

Make checks out to Bob Garbe and enclose with registration.

**Early PAID Registration is ONLY \$33.00. Deadline is Monday, July 3rd.
 Deadline for your PAID \$36.00 Registration is Monday, July 24th.**

~ Register early to reserve your discounted spot as one of the 40 golfers in the SEWER Open ~

The SEWER Executive Team: Gary Pufahl, Greg Pufahl, Tom Kneser, Bob Garbe, & Paul Berger

(Cut off and return the bottom portion. Save the top for your information.)

2017 SEWER OPEN REGISTRATION FORM

NAME: _____

EMAIL: _____

ADDRESS: _____

CITY: _____ **ST:** _____ **ZIP** _____

Requested Golf Partners ... 1) _____ **2)** _____

3) _____

Average Score for 18?

**or write "S" for Senior
flight (65 or older)**

